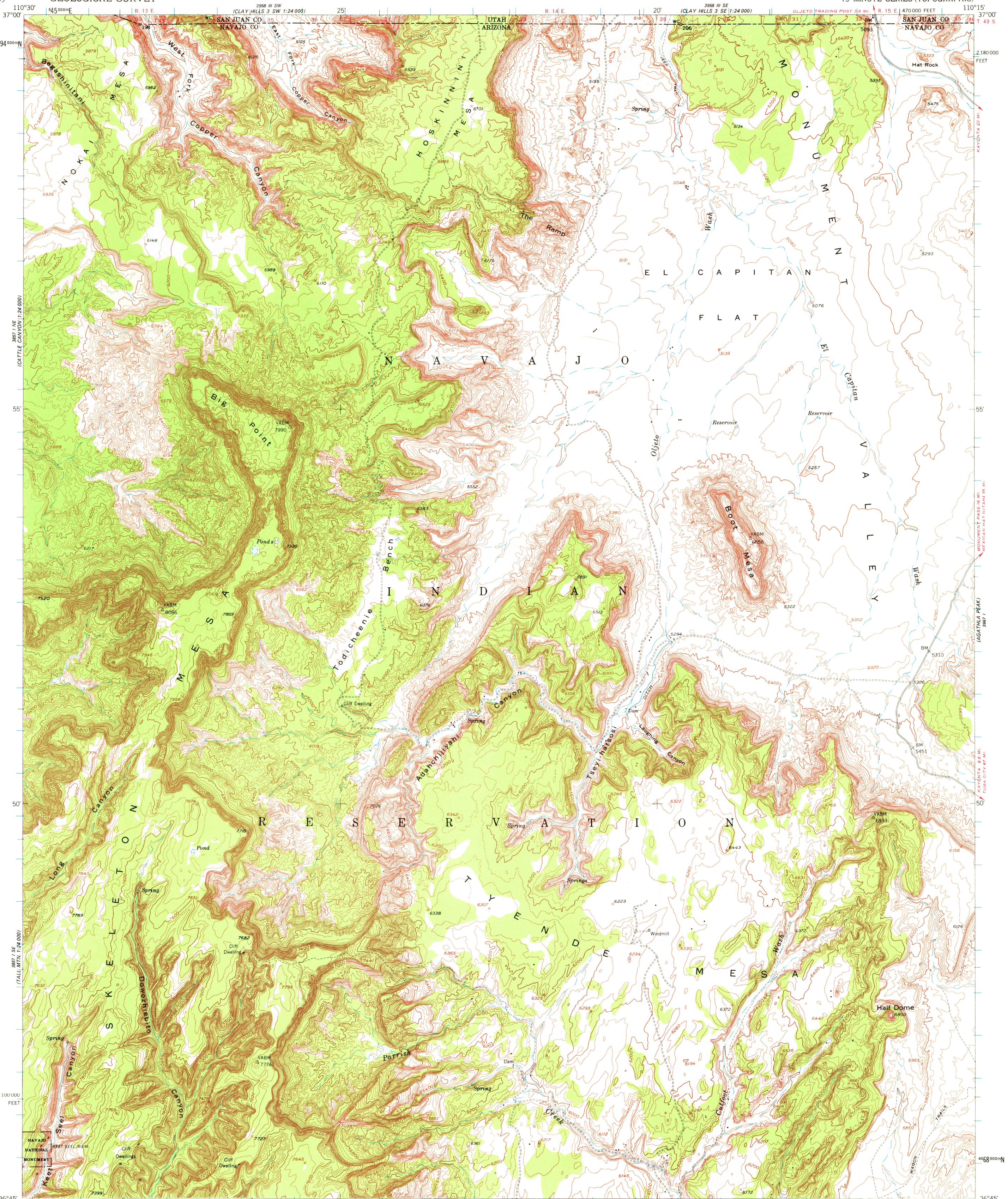


3988 II SE
(NAVAJO MTS. 4 SE)
1:24,000

UNITED STATES
DEPARTMENT OF THE INTERIOR
GEOLOGICAL SURVEY

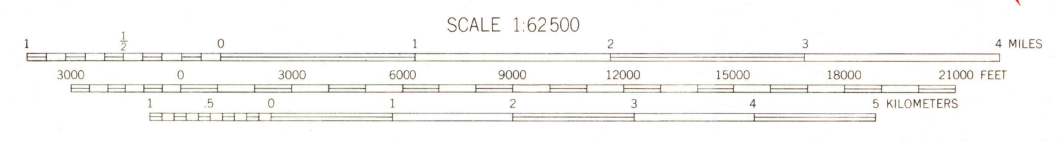
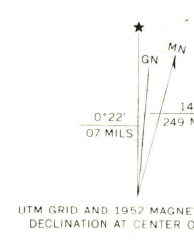
BOOT MESA QUADRANGLE
ARIZONA-UTAH
15 MINUTE SERIES (TOPOGRAPHIC)

3988 II SW
(CLAY HILLS 4 SW)
1:24,000



3987 II SE
(BETA MOUNTAIN)
1:24,000

Mapped, edited, and published by the Geological Survey
Control by USGS, USC&GS, and USBR
Topography from aerial photographs by multiplex methods
Aerial photographs taken 1951. Advance field check 1952
Polyconic projection. 1927 North American datum
10,000-foot grid based on Arizona coordinate system, east zone
Unchecked elevations are shown in brown
1000-meter Universal Transverse Mercator grid ticks,
zone 12, shown in blue



ROAD CLASSIFICATION

Heavy-duty	4 LANE 6 LANE	Light-duty
Medium-duty	4 LANE 6 LANE	Unimproved dirt
U. S. Route		Slate Route



QUADRANGLE LOCATION
This area also covered by 1:24 000-scale maps of
Agathia Peak 2 NE, Agathia Peak 2 NW, Agathia
Peak 2 SW, and Agathia Peak 2 SE 7.5 minute
quadrangles, surveyed in 1951.

JUN 06 1978
BOOT MESA, ARIZ.-UTAH
N3645-W1015/15

2300

THIS MAP COMPLIES WITH NATIONAL MAP ACCURACY STANDARDS
FOR SALE BY U. S. GEOLOGICAL SURVEY, DENVER, COLORADO 80225, OR RESTON, VIRGINIA 22092
A FOLDER DESCRIBING TOPOGRAPHIC MAPS AND SYMBOLS IS AVAILABLE ON REQUEST

1952
AMS 3957 I-SERIES V798

USGS
Historical File
Topographic Division