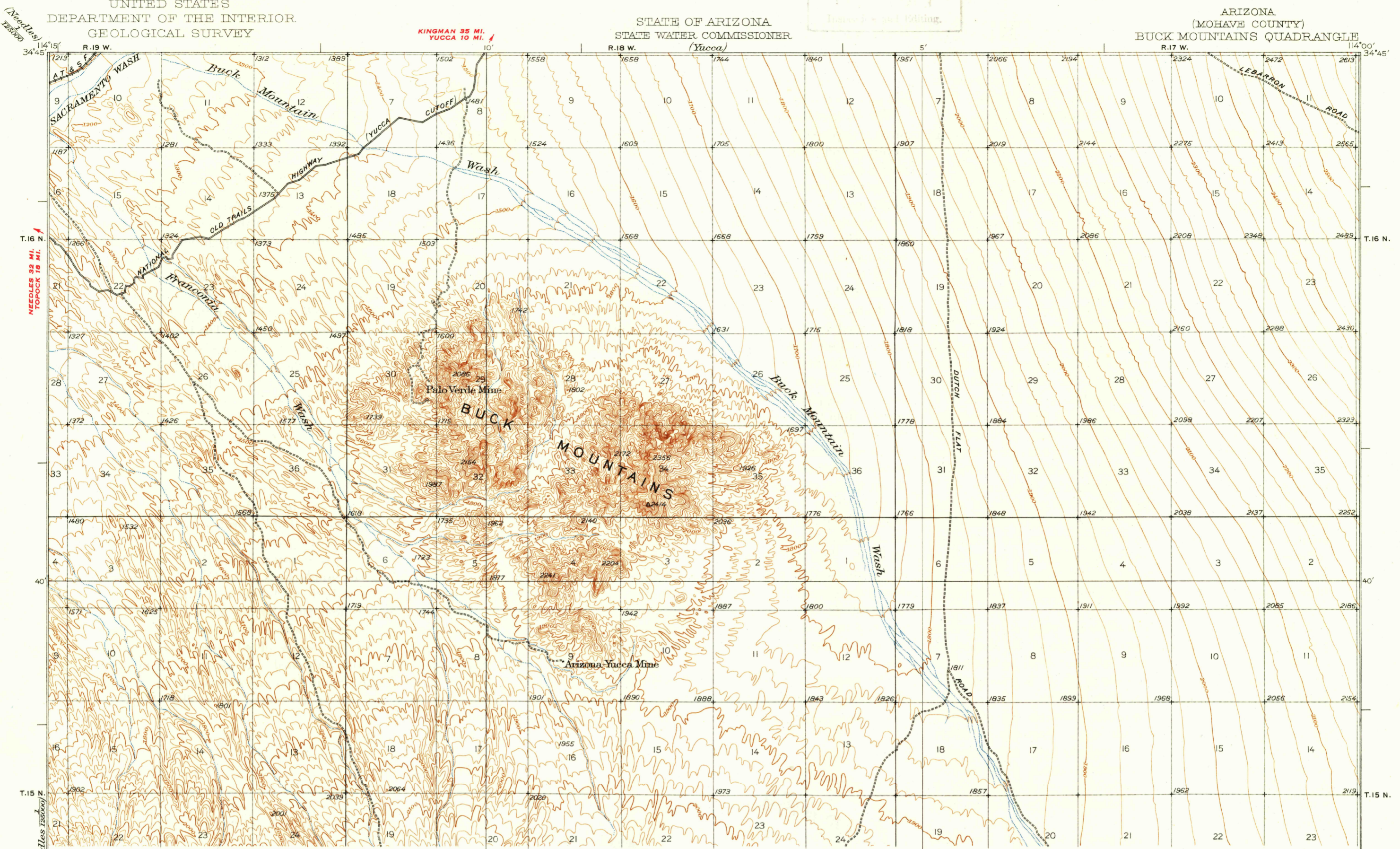


U.S.G.S.
FILE COPY
Dated and Edition.

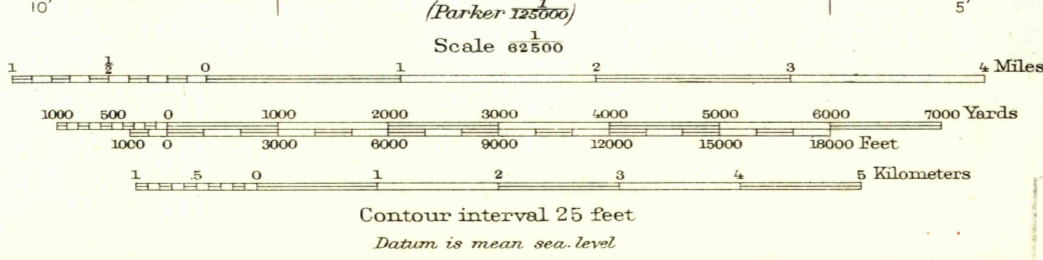
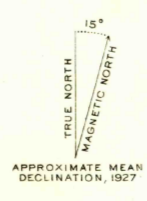


UNSURVEYED AREA

Topography by J.L. Lewis and Bishop Moorhead
Surveyed in 1926-1927

ROAD CLASSIFICATION		U. S. Route
Dependable hard-surface	Dry weather roads	15
heavy-duty road	Loose-surface graded	18
Secondary hard-surface	Unsurfaced, graded	20
all-weather road	Dirt road	22

More than two lanes indicated along road with tick at point of change. **3 LANE, 4 LANE**



USGS
Historical File
Topographic Division

Polyconic projection, North American datum
5000 yard grid based upon U.S. zone system, F

U.S.G.S.
FILE COPY
Dated and Edition.

BUCK MOUNTAINS, ARIZ.
Edition of 1929
reprinted 1947
N3430-W1400/15

MAY 7, 1947 2140