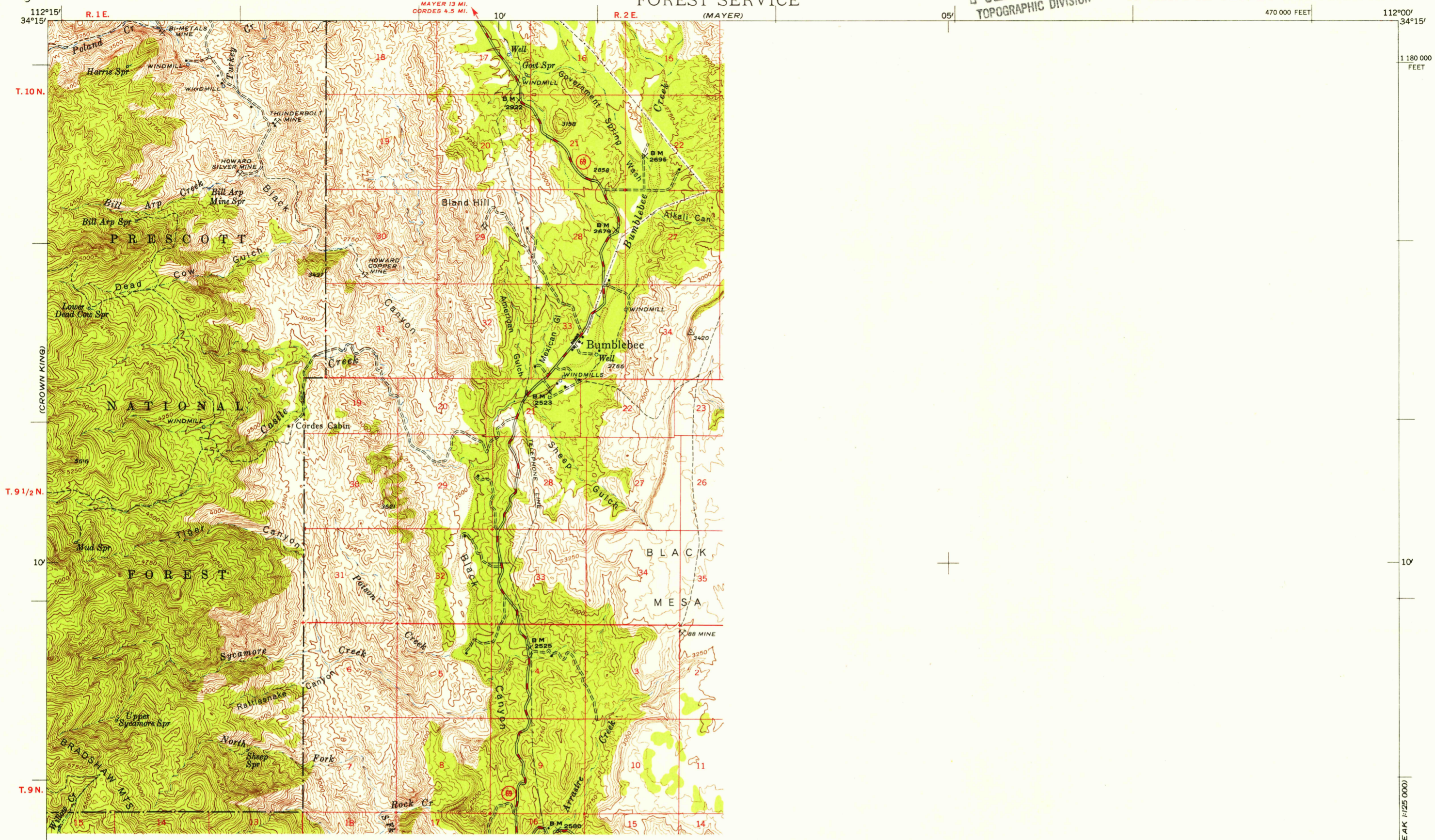
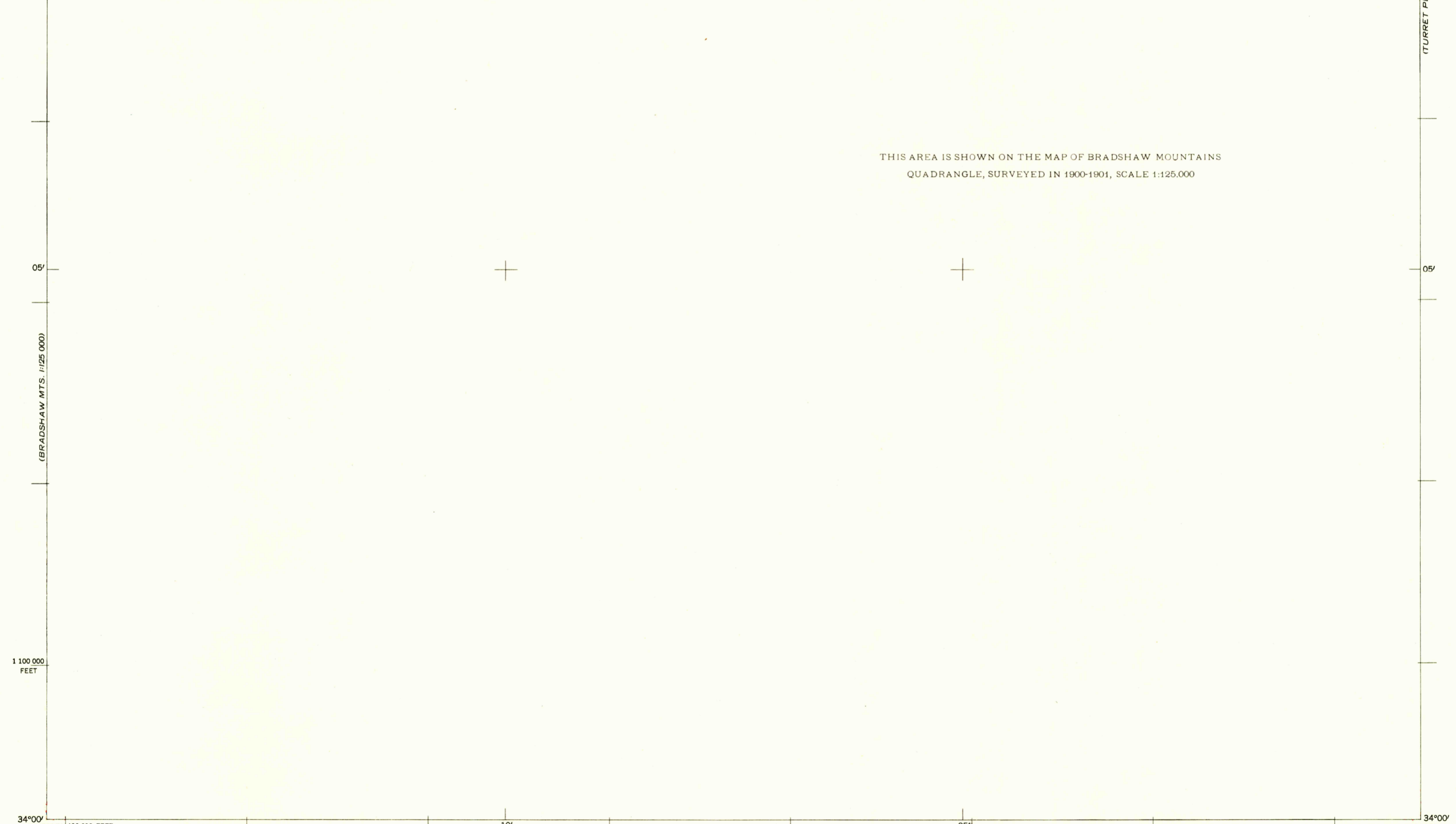


U.S.G.S.
FILE COPY
TOPOGRAPHIC DIVISION

(TURRET PEAK)
1:125 000



THIS AREA IS SHOWN ON THE MAP OF BRADSHAW MOUNTAINS
QUADRANGLE, SURVEYED IN 1900-1901, SCALE 1:125,000



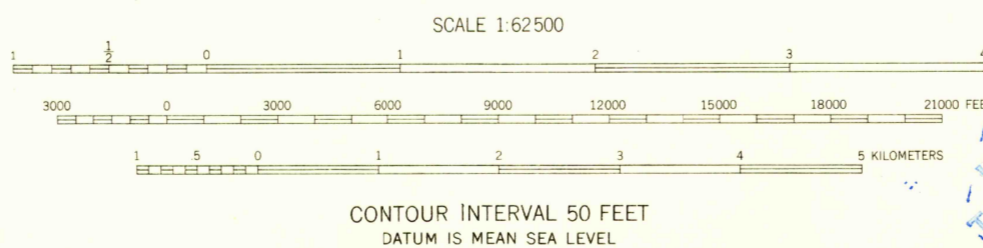
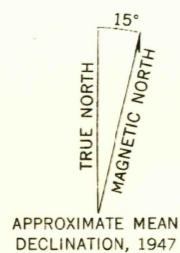
Mapped by the U. S. Forest Service
Edited and published by the Geological Survey
Control by USGS, USC&GS and USFS

Topography from aerial photographs by KEK plotter
Aerial photographs taken 1946. Field check 1947

Polyconic projection. 1927 North American datum
10,000-foot grid based on Arizona coordinate system,
central zone

No distinction is made between dwellings, barns,
commercial, and industrial buildings

Dashed land lines indicate approximate location



ROAD CLASSIFICATION

HARD-SURFACE ALL WEATHER ROADS	DRY WEATHER ROADS
Heavy-duty ——— 4 LANE 16 LANE	Improved dirt ———
Medium-duty ——— 4 LANE 16 LANE	Unimproved dirt ———
Loose-surface, graded, or narrow hard-surface - - - - -	
U. S. Route	State Route

U.S.G.S.
FILE COPY
TOPOGRAPHIC DIVISION

BUMBLEBEE, ARIZ.
N3400-W11200/15

1947

DEC 12 1955

THIS MAP COMPLIES WITH NATIONAL MAP ACCURACY STANDARDS
FOR SALE BY U. S. GEOLOGICAL SURVEY, DENVER, COLORADO OR WASHINGTON 25, D. C.
A FOLDER DESCRIBING TOPOGRAPHIC MAPS AND SYMBOLS IS AVAILABLE ON REQUEST

1-04-2 4000