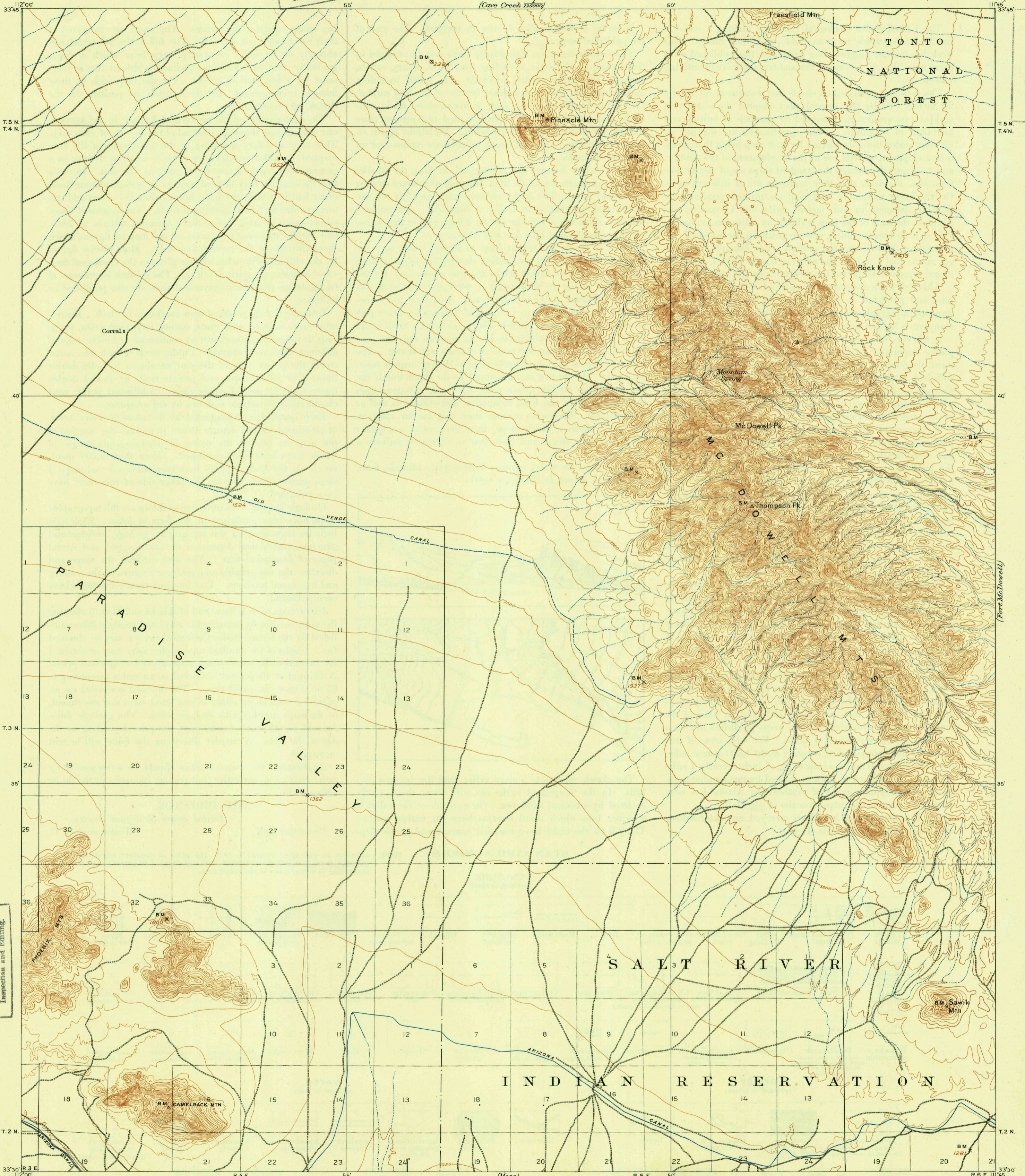


U. S. G. S.
FILE COPY
Inspection and Editing.

(Cave Creek 1880s)

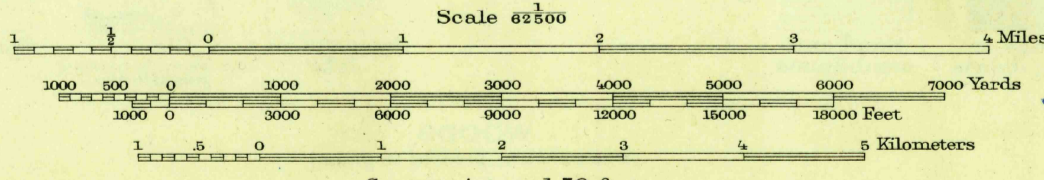
U. S. G. S.
FILE COPY
Inspection and Editing.



U. S. G. S.
FILE COPY
Inspection and Editing.

E. M. Douglas, Geographer.
T. M. Bannon, in charge of section.
Topography by T. M. Bannon, C. H. Birdseye, S. S. Stahl,
and Reclamation Service.
Triangulation by A. H. Thompson and T. M. Bannon.
Surveyed in 1903-1904.

APPROXIMATE MEAN
MAGNETIC NORTH
DECLINATION 1904



USGS
Historical File
Topographic Division

Edition of Dec. 1906,
reprinted 1948
Polyconic projection

CAMELBACK, ARIZ.
N3330-W114545

U. S. G. S.
FILE COPY
Inspection and Editing.

NOV 8 1948