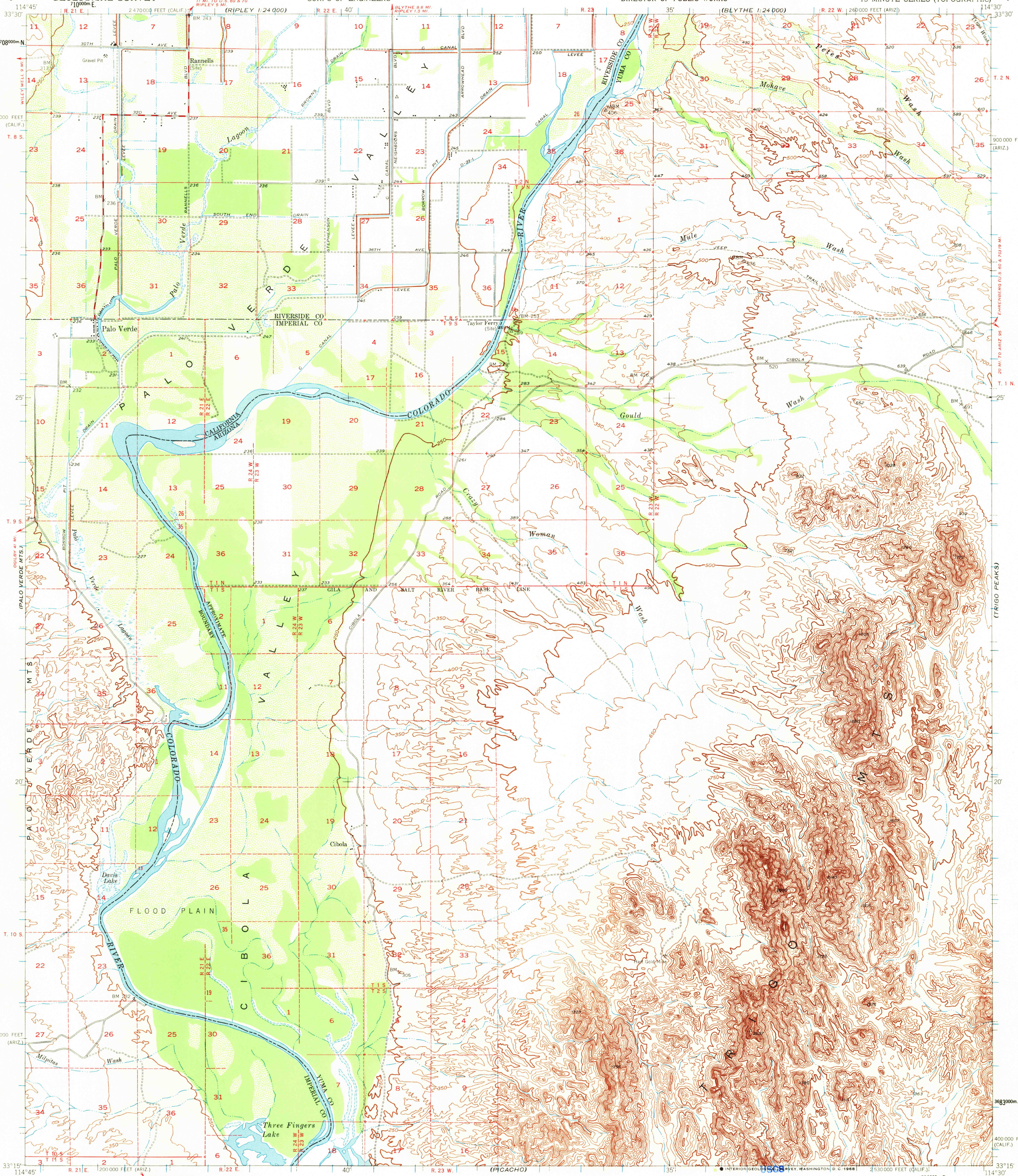


UNITED STATES  
DEPARTMENT OF THE INTERIOR  
GEOLOGICAL SURVEY

UNITED STATES  
DEPARTMENT OF THE ARMY  
CORPS OF ENGINEERS

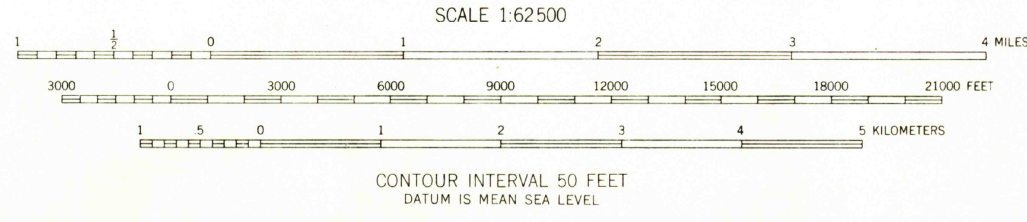
STATE OF CALIFORNIA  
REPRESENTED BY THE  
DIRECTOR OF PUBLIC WORKS

CIBOLA QUADRANGLE  
ARIZONA-CALIFORNIA  
15 MINUTE SERIES (TOPOGRAPHIC)



Map by the Army Map Service  
 Edited and published by the Geological Survey  
 Control by USGS, USC&GS, USCE, and City of Los Angeles  
 Topography from aerial photographs by multiplex methods 1943  
 Aerial photographs taken 1940. Culture and drainage  
 revision by USGS 1951  
 Polyconic projection. 1927 North American datum  
 10,000-foot grids based on Arizona coordinate system, west zone,  
 and California coordinate system, zone 6  
 1000-meter Universal Transverse Mercator grid ticks,  
 zone 11, shown in blue  
 Arizona-California boundary shown from best available information  
 Dashed land lines indicate approximate locations

TRUE NORTH  
 MAGNETIC NORTH  
 APPROXIMATE MEAN  
 DEC. INATION, 1951



FOR SALE BY U. S. GEOLOGICAL SURVEY, DENVER, COLORADO 80225 OR WASHINGTON, D. C. 20242  
 A FOLDER DESCRIBING TOPOGRAPHIC MAPS AND SYMBOLS IS AVAILABLE ON REQUEST

Historical File  
 Topographic Division



U.S.G.S.  
**FILE COPY**  
 TOPOGRAPHIC DIVISION

ROAD CLASSIFICATION  
 Medium-duty — Light-duty  
 Unimproved dirt  
 The northeast, northwest and southwest quarters  
 of this area are covered by 1:24 000 scale maps  
 of Mule Wash 1952, Palo Verde 1951, and  
 Cibola 1955 7.5-minute quadrangles

CIBOLA, ARIZ.-CALIF.  
 N3315-W11430/15  
 1951

FEB 18 1963

5260