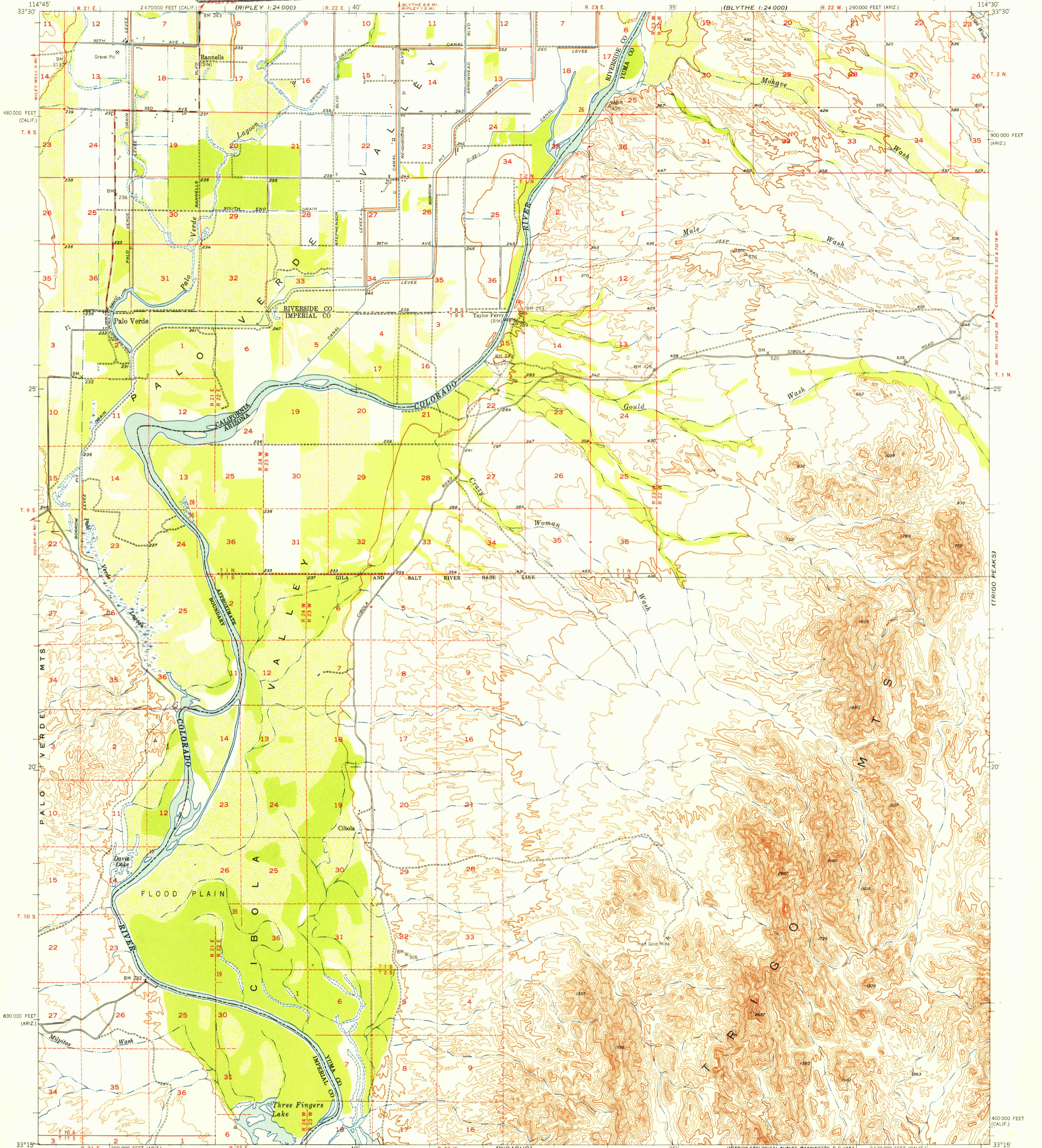
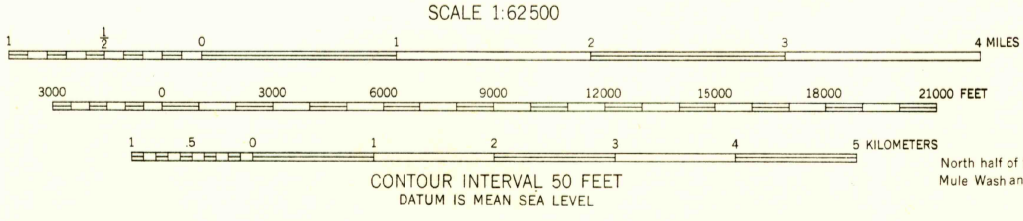
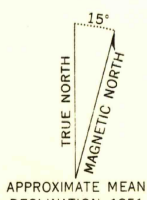


(DOME ROCK MTS.)



Mapped by the Army Map Service  
Edited and published by the Geological Survey  
Control by USGS, USC&GS, USCE, and City of Los Angeles  
Topography from aerial photographs by multiplex methods 1943  
Aerial photographs taken 1940. Culture and drainage  
revision by USGS 1951  
Polyconic projection. 1927 North American datum  
10,000-foot grids based on Arizona coordinate system, west zone,  
and California coordinate system, zone 6  
Arizona-California boundary shown from best available information  
Dashed land lines indicate approximate locations



USGS  
Historical File  
Topographic Division

ROAD CLASSIFICATION

Heavy-duty	4 LANE (6 LANE)	Light-duty
Medium-duty	4 LANE (6 LANE)	Unimproved dirt

U.S. Route (square symbol)  
State Route (circle symbol)

North half of this area is also covered by 1:24,000 scale maps of  
Mule Wash and Palo Verde 7 1/2 Minute quadrangles.

FOR SALE BY U. S. GEOLOGICAL SURVEY, FEDERAL CENTER, DENVER, COLORADO OR WASHINGTON 25, D. C.  
A FOLDER DESCRIBING TOPOGRAPHIC MAPS AND SYMBOLS IS AVAILABLE ON REQUEST

U.S.G.S.  
**FILE COPY**  
Inspection and Editing

CIBOLA, ARIZ.-CALIF.  
N3315-W11430/15

1951

DEC 12 1952

3320