

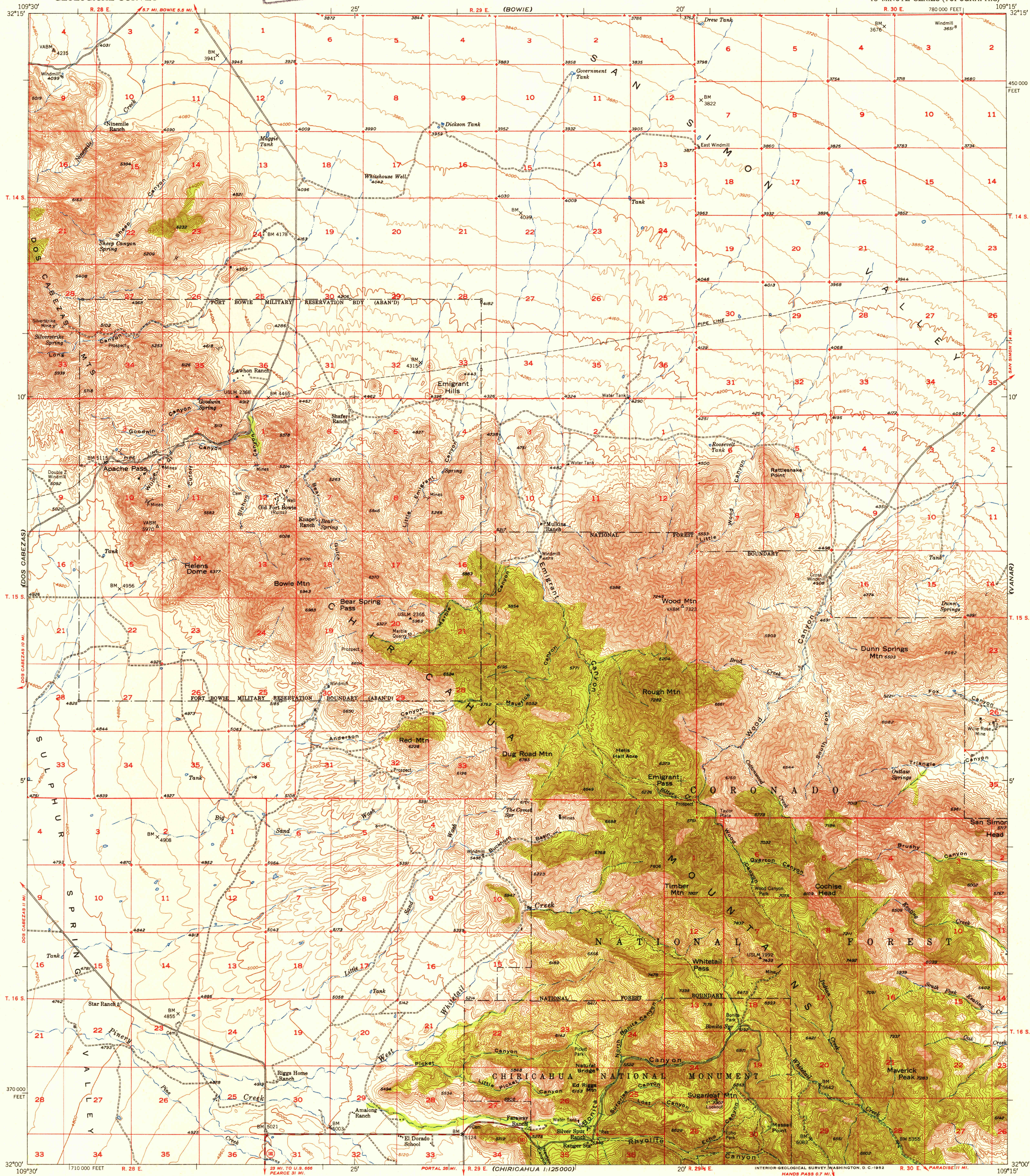
(FISHER HILLS)

UNITED STATES
DEPARTMENT OF THE INTERIOR
GEOLOGICAL SURVEY

U. S. G. S.
FILE COPY
Inspection and Editing.

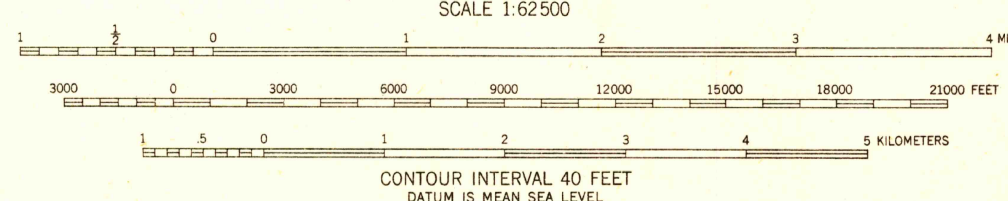
COCHISE HEAD QUADRANGLE
ARIZONA-COCHISE CO.
15 MINUTE SERIES (TOPOGRAPHIC)

(SAN SIMON)



Maped, edited, and published by the Geological Survey
Control by USGS and USC&GS
Topography from aerial photographs by multiplex methods
and by plane-table surveys 1950. Aerial photographs taken 1947
Polyconic projection. 1927 North American datum
10,000-foot grid based on Arizona coordinate system, east zone
Unchecked elevations are shown in brown

TRUE NORTH
MAGNETIC NORTH
APPROXIMATE MEAN
DECLINATION, 1950



USGS
Historical File
Topographic Division

ROAD CLASSIFICATION
Heavy-duty ——— 1 LANE 16 LANE Light-duty ———
Medium-duty ——— 2 LANE 16 LANE Unimproved dirt ———
U. S. Route ——— State Route ———

U. S. G. S.
FILE COPY
Inspection and Editing.

COCHISE HEAD, ARIZ.
N3200-W10915/15

1950

OCT 9 1952 2/30

THIS MAP COMPLIES WITH NATIONAL MAP ACCURACY STANDARDS
FOR SALE BY U. S. GEOLOGICAL SURVEY, FEDERAL CENTER, DENVER, COLORADO OR WASHINGTON 25, D. C.
A FOLDER DESCRIBING TOPOGRAPHIC MAPS AND SYMBOLS IS AVAILABLE ON REQUEST