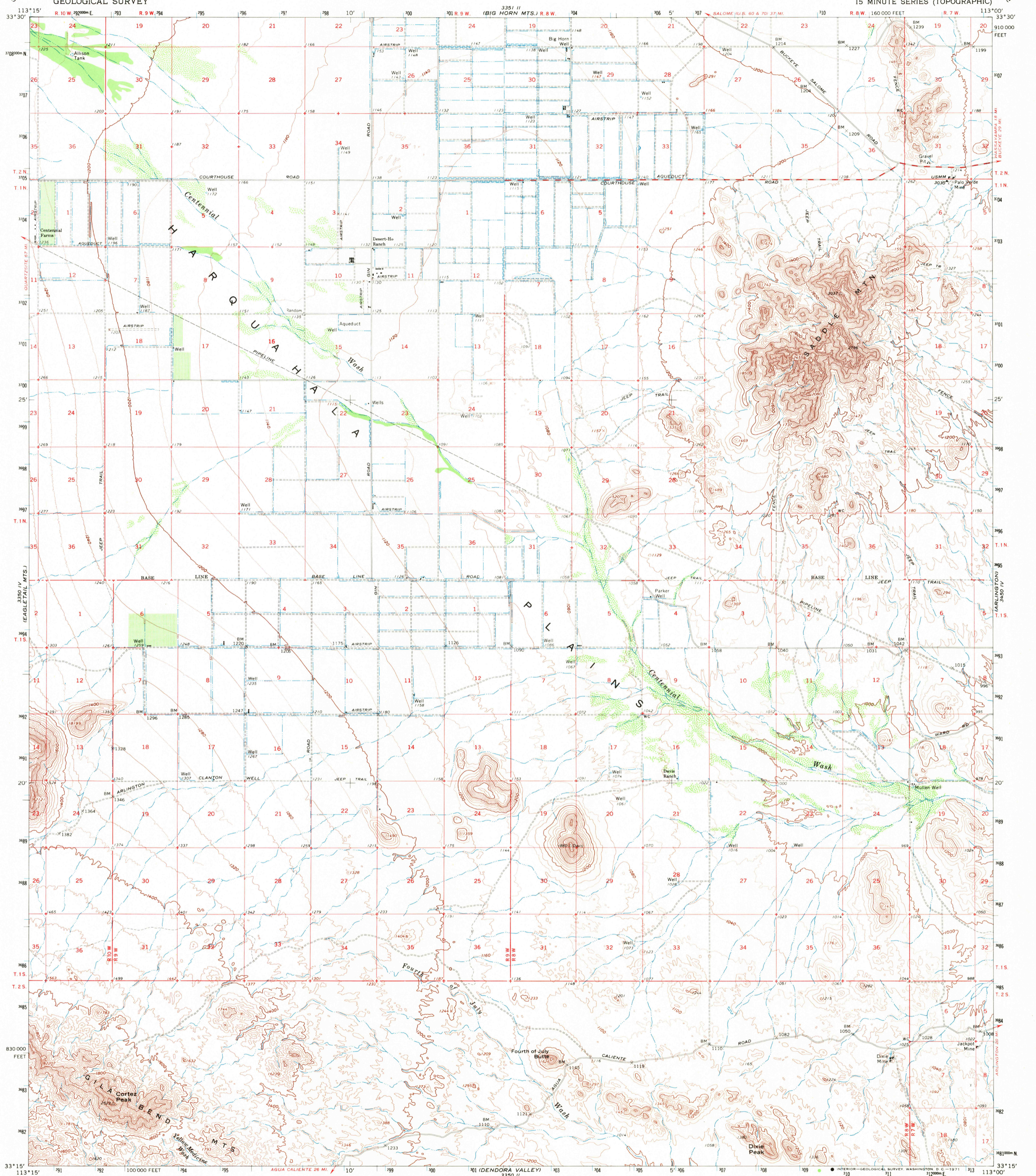


3351 II (LOME MTS.)

3351 II (BELMONT MTS.)

UNITED STATES
DEPARTMENT OF THE INTERIOR
GEOLOGICAL SURVEY

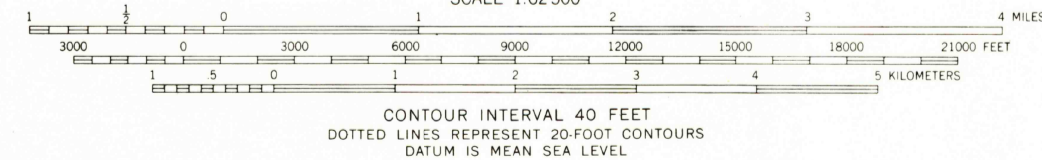
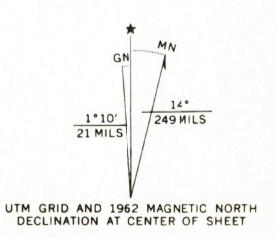
CORTEZ PEAK QUADRANGLE
ARIZONA—MARICOPA CO.
15 MINUTE SERIES (TOPOGRAPHIC)



3351 II NE (1/4, 3/4, 000)

3351 II (WOOLSEY PEAK)

Mapped, edited, and published by the Geological Survey
Control by USGS and USC&GS
Topography by photogrammetric methods from aerial
photographs taken 1956 and 1960 and by planetable surveys 1962
Polyconic projection. 1927 North American datum
10,000-foot grid based on Arizona coordinate system, central zone
1000-meter Universal Transverse Mercator grid ticks,
zone 12, shown in blue
Where omitted, land lines have not been established



ROAD CLASSIFICATION
Medium-duty ——— Light-duty ———
Unimproved dirt - - - - -

THIS MAP COMPLIES WITH NATIONAL MAP ACCURACY STANDARDS
FOR SALE BY U. S. GEOLOGICAL SURVEY, DENVER, COLORADO 80225 OR WASHINGTON, D. C. 20242
A FOLDER DESCRIBING TOPOGRAPHIC MAPS AND SYMBOLS IS AVAILABLE ON REQUEST

USGS
HISTORICAL FILE
TOPOGRAPHIC DIVISION

CORTEZ PEAK, ARIZ.
N3315-W11300/15
1962
AMS 3350 I—SERIES V798

SEP 15 1971
4785