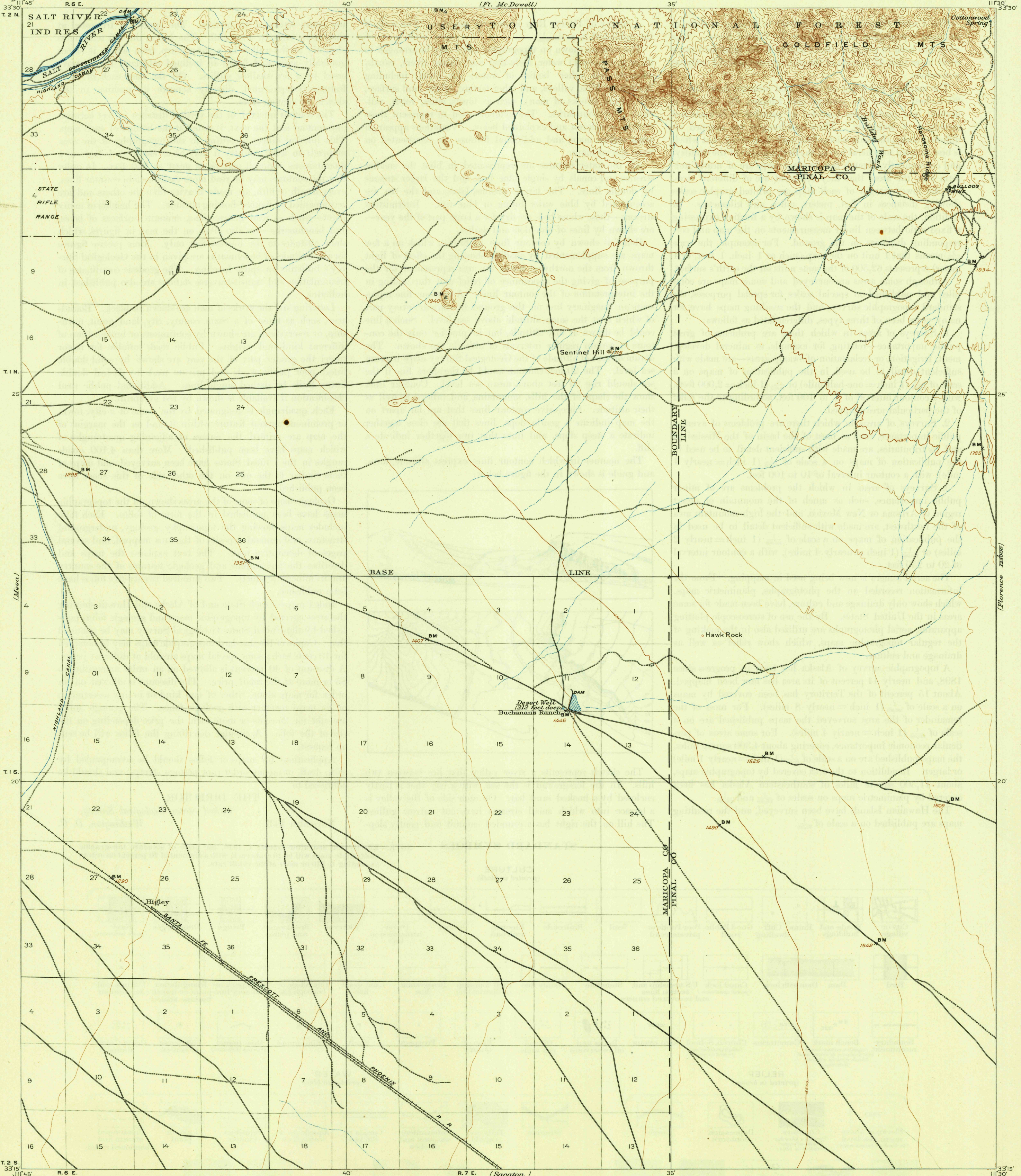


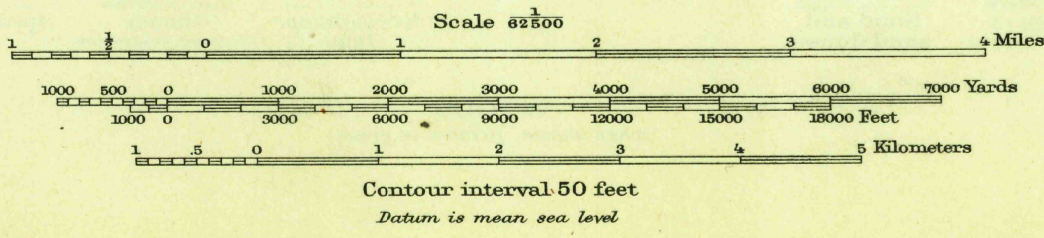
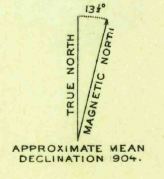
U. S. G. S.
FILE COPY
Illustration and Editing.

UNITED STATES
DEPARTMENT OF THE INTERIOR
GEOLOGICAL SURVEY

ARIZONA
DESERT WELL QUADRANGLE



(Camel Springs) 11°45' 33'30" T. 2 N.
R. 6 E.
E. M. Douglas, Geographer.
T. M. Bannon, in charge of section.
Topography by C. H. Birdseye, S. S. Stahl, and D. F. Moor.
Triangulation by T. M. Bannon.
Surveyed in 1904.



USGS
Historical File
Topographic Division

Polyconic projection. To place on North American datum move projection lines 490 feet south and 280 feet west.

DESERT WELL, ARIZ.
Edition of July 1906, reprinted 1946
N3315-W1130/15

U. S. G. S.
FILE COPY
Illustration and Editing.