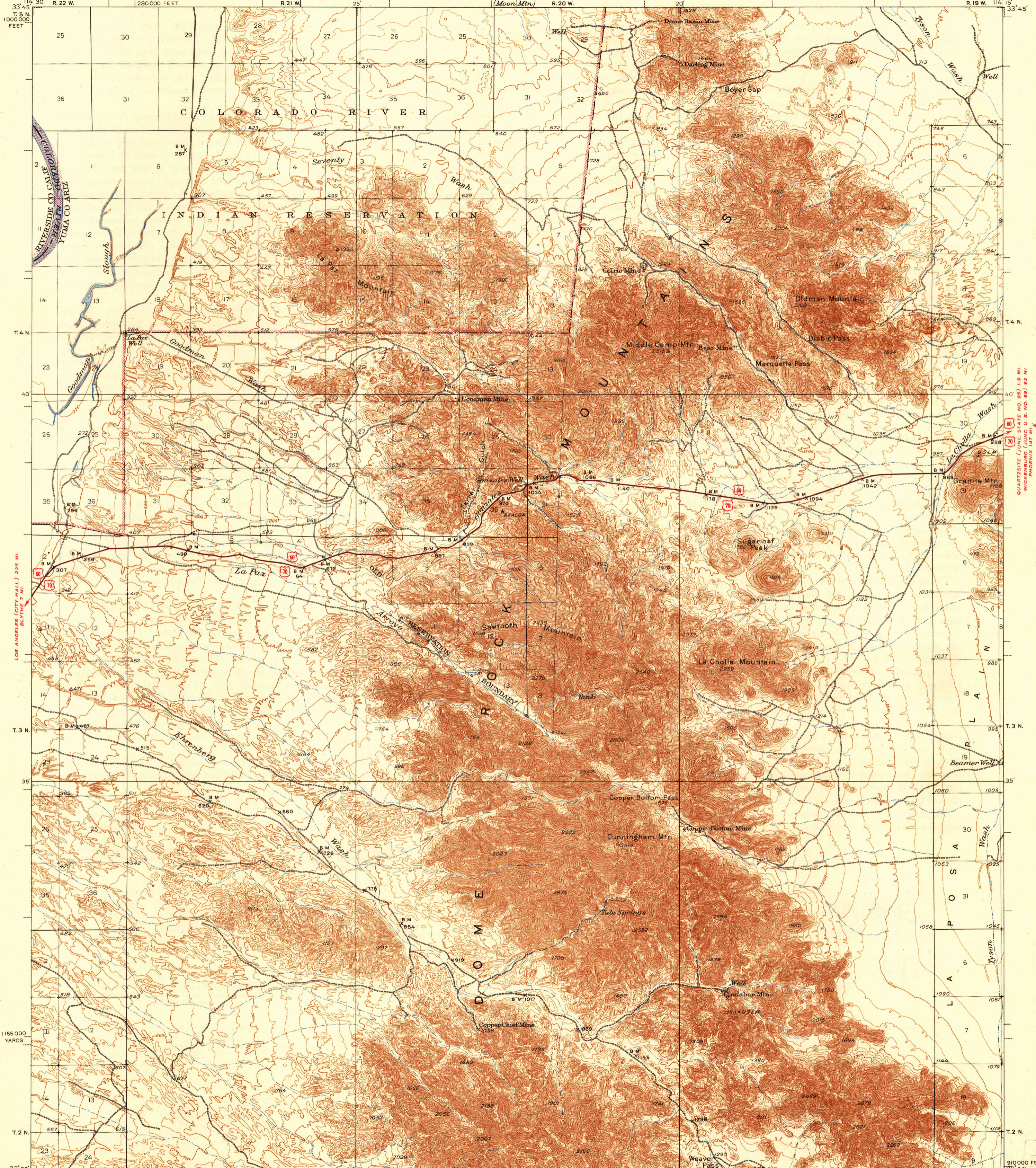


U.S.G.S.  
FILE COPY  
Transmission and Billing.

UNITED STATES  
DEPARTMENT OF THE INTERIOR  
GEOLOGICAL SURVEY

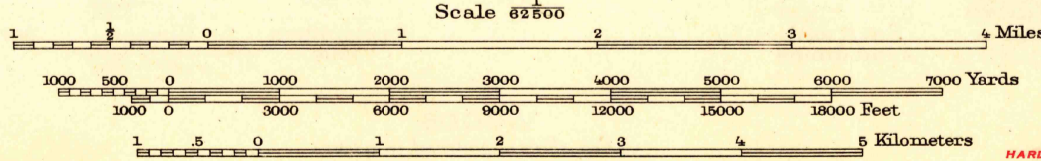
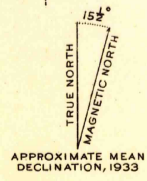
ARIZONA-CALIFORNIA  
DOME ROCK MTS. QUADRANGLE



LOS ANGELES (CITY HALL) 235 MI.  
BLYNNE 7 MI.

QUARTZSITE (JUN. STATE NO. 98) 1.5 MI.  
WICKIQUO (JUN. STATE NO. 99) 1.5 MI.  
PHOENIX 147 MI.

Topography by R.C. Seitz, S.C. Kain, and C.N. Mortenson  
Surveyed in 1933



Contour interval 25 feet  
Datum is mean sea level.

USGS  
Historical File  
Topographic Division

ROUTES USUALLY TRAVELED  
HARD IMPERVIOUS SURFACES  
OTHER SURFACE IMPROVEMENTS  
U.S. ROUTE 1945 STATE ROUTE

Polyconic projection, 1927 North American datum  
5000 yard grid based on U.S. zone system, F  
10000 foot grid based on Arizona (West)  
rectangular coordinate system  
To join Moon Mtn. use dotted projection  
corners  
DOME ROCK MTS. ARIZ.-CALIF.  
Edition of 1940  
reprinted 1947  
N3330-W11415/15

U.S.G.S.  
FILE COPY