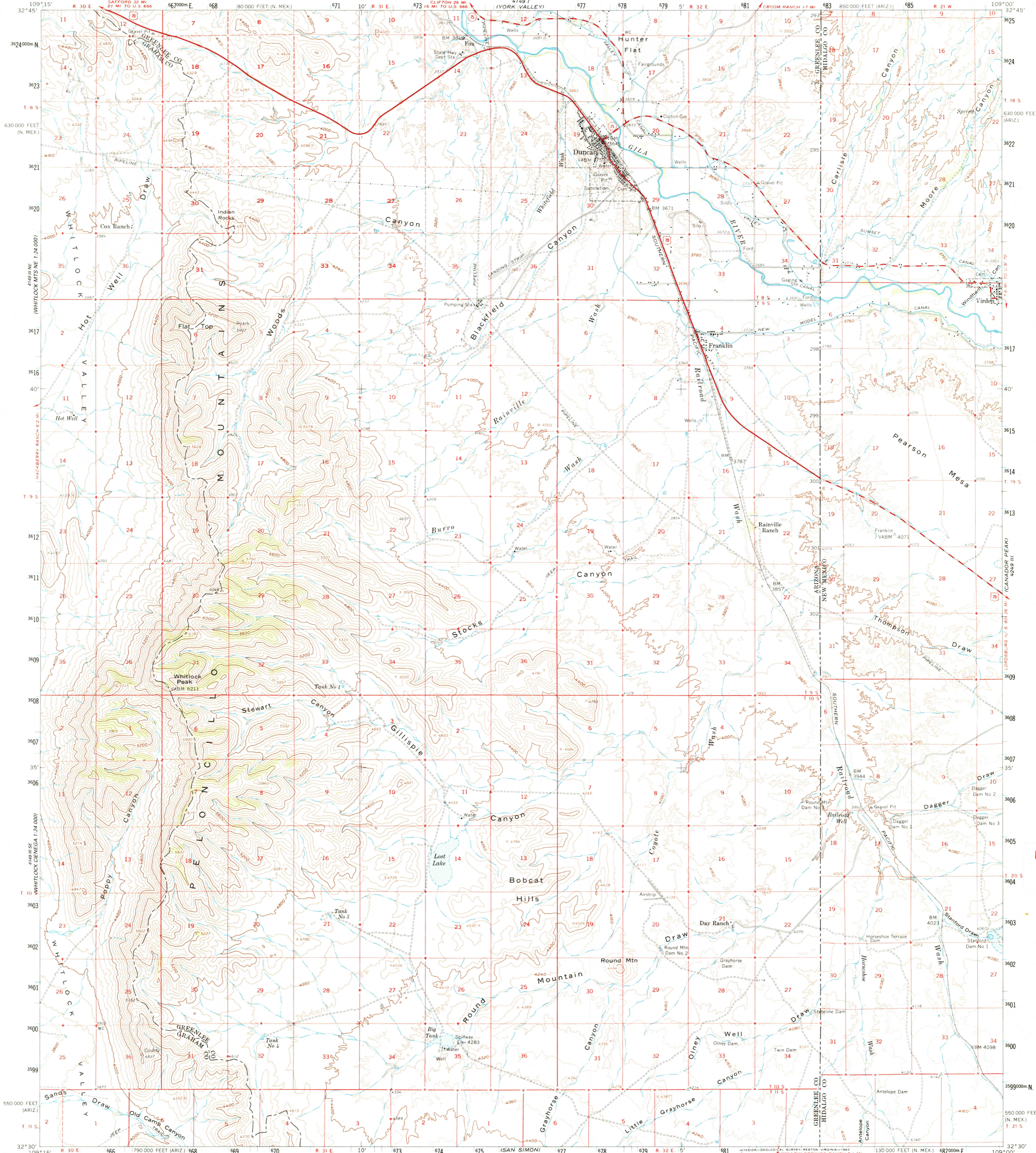
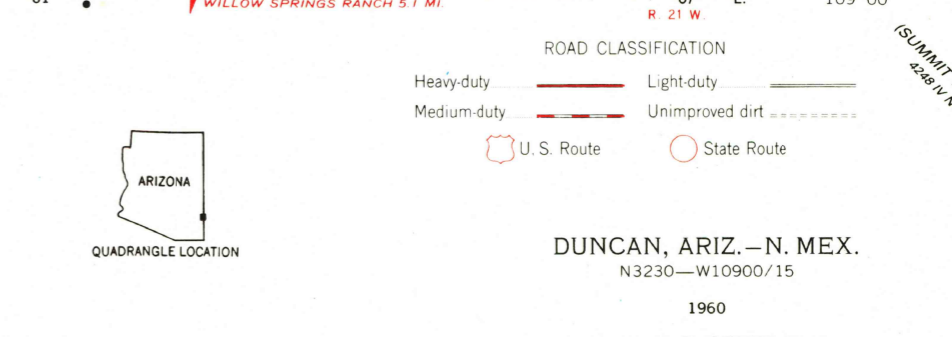
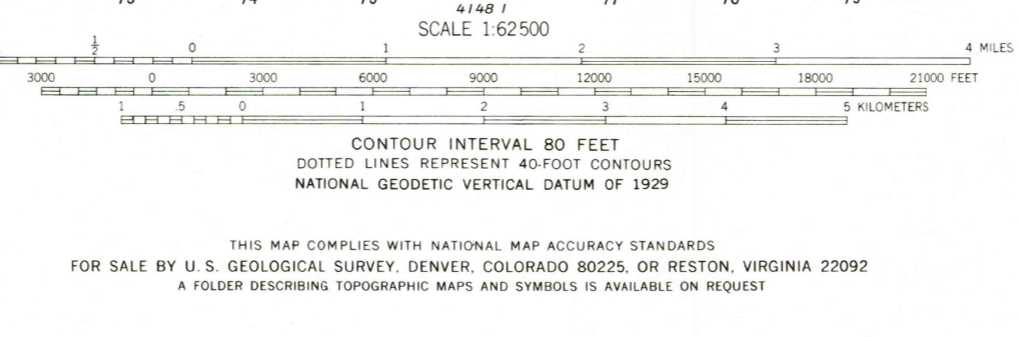
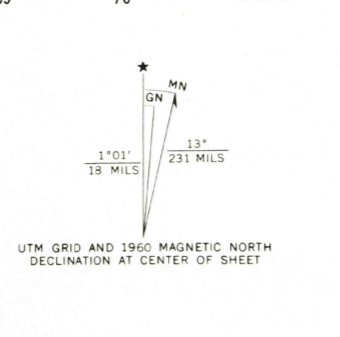


UNITED STATES
DEPARTMENT OF THE INTERIOR
GEOLOGICAL SURVEY

DUNCAN QUADRANGLE
ARIZONA-NEW MEXICO
15 MINUTE SERIES (TOPOGRAPHIC)



Mapped, edited, and published by the Geological Survey
Control by USGS, USC&GS, and U. S. Soil Erosion Service
Topography from aerial photographs by photogrammetric methods
Aerial photographs taken 1953. Field check 1960
Polyconic projection. 1927 North American datum
10,000-foot grids based on Arizona coordinate system, east zone
and New Mexico coordinate system, west zone
1000-meter Universal Transverse Mercator grid ticks,
zone 12, shown in blue
To place on the predicted North American Datum 1983
move the projection lines 6 meters south and
58 meters east
Dashed land lines indicate approximate location



USGS Library
Reston, VA.
Topo Archive