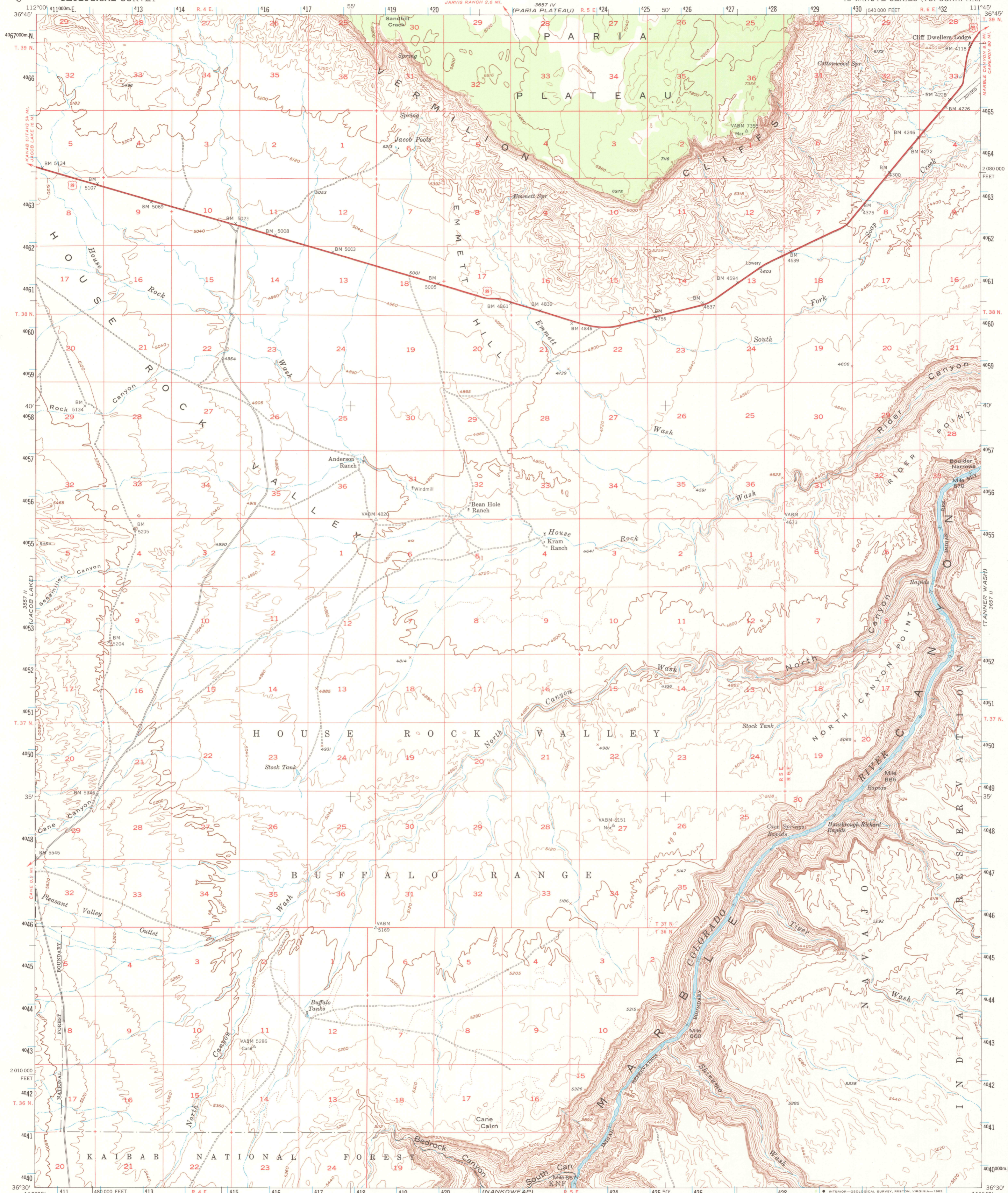
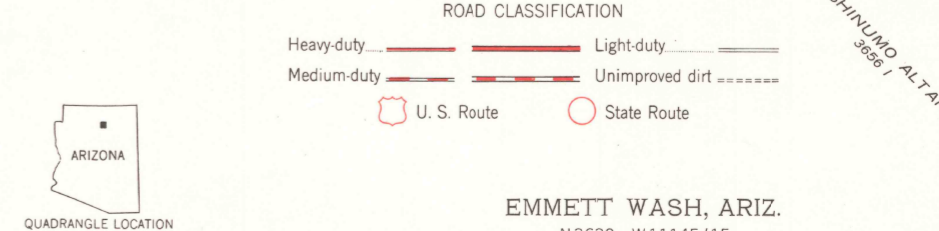
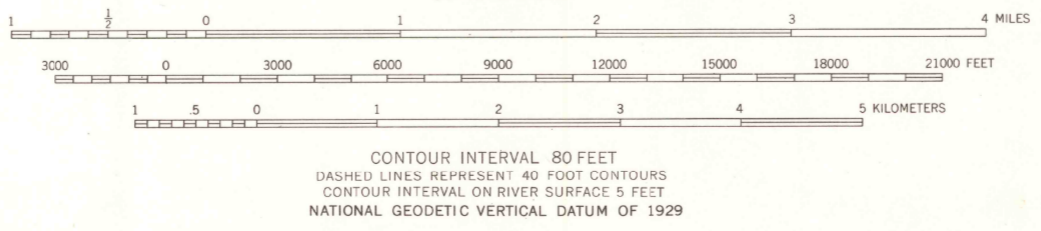
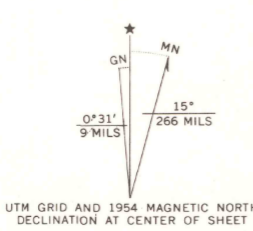


UNITED STATES
DEPARTMENT OF THE INTERIOR
GEOLOGICAL SURVEY

EMMETT WASH QUADRANGLE
ARIZONA—COCONINO CO.
15 MINUTE SERIES (TOPOGRAPHIC)



Mapped, edited, and published by the Geological Survey with cooperation by the Atomic Energy Commission Control by USGS and USACE. Topography from aerial photographs by multiplex methods. Aerial photographs taken 1951. Advance field check 1954. Polyconic projection, 1927 North American datum 10,000-foot grid based on Arizona coordinate system, central zone. Unchecked elevations are shown in brown. 1000-meter Universal Transverse Mercator grid ticks, zone 12, shown in blue. To place on the predicted North American Datum 1983 move the projection lines 6 meters north and 66 meters east. There may be private inholdings within the boundaries of the National or State reservations shown on this map.



CONTOUR INTERVAL 80 FEET
DASHED LINES REPRESENT 40 FOOT CONTOURS
CONTOUR INTERVAL ON RIVER SURFACE 5 FEET
NATIONAL GEODETIC VERTICAL DATUM OF 1929

EMMETT WASH, ARIZ.
N 3630—W 11145/15



1954
DMA 3657 III—SERIES V798

THIS MAP COMPLIES WITH NATIONAL MAP ACCURACY STANDARDS
FOR SALE BY U.S. GEOLOGICAL SURVEY, DENVER, COLORADO 80225, OR RESTON, VIRGINIA 22092
A FOLDER DESCRIBING TOPOGRAPHIC MAPS AND SYMBOLS IS AVAILABLE ON REQUEST