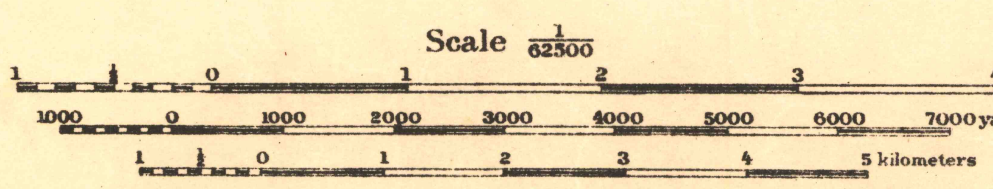


Base Map U. S. Geological Survey Engraving.

J. N. Hodges, Maj., Corps of Engineers, Engineer.  
Robt. C. Hunter, Capt., C. of E., Acting Chief of Map Section.  
A. Drouet, Suveyor, Chief Draftsman.  
Joseph W. Shipley, Pvt., 29th Engrs. Draftsman.

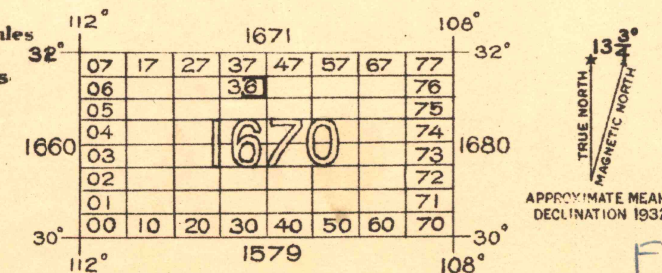
Originally revised under direction of Department  
Engineer, Southern Department, 1915

Revised by reconnaissance methods under direction of  
Engineer, Eighth Corps Area, by Capt. P. E. Bermei, C of E., 1922.



FIVE THOUSAND YARD GRID COMPUTED FROM "GRID SYSTEM FOR PROGRESSIVE MAPS  
IN THE U. S." ZONE "F" U. S. C. & G. S. SPECIAL PUBLICATION NO. 59.  
(THE LAST THREE DIGITS OF THE GRID NUMBERS ARE OMITTED)

NOTE: USERS OF THIS MAP ARE REQUESTED TO MARK HEREON CORRECTIONS AND ADDITIONS WHICH COME  
TO THEIR ATTENTION AND MAIL DIRECT TO "ENGINEER, EIGHTH CORPS AREA, FT. SAM HOUSTON, TEX."



Polyconic Projection, North American Datum.

FAIRBANK

Enlarged by photography from 30 minute quadrangle  
on Polyconic Projection North American Datum, placing the  
medial meridian on the left edge of this sheet.

EIGHTH CORPS AREA ENGINEER REPRODUCTION PLANT 1932.