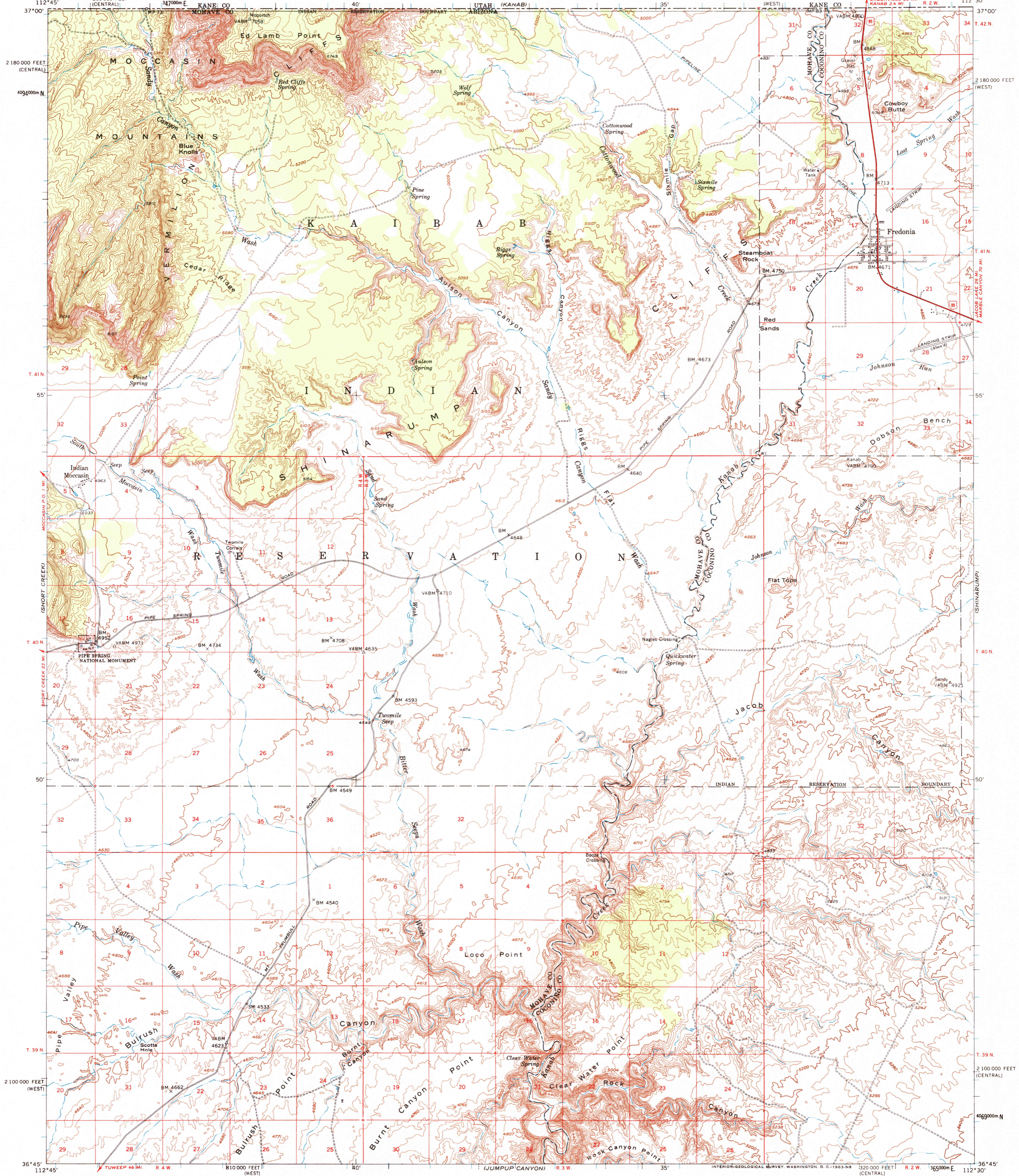


UNITED STATES
DEPARTMENT OF THE INTERIOR
GEOLOGICAL SURVEY

FREDONIA QUADRANGLE
ARIZONA
15 MINUTE SERIES (TOPOGRAPHIC)



Mapped, edited, and published by the Geological Survey in cooperation with the Atomic Energy Commission

Control by USGS and USC&GS

Topography from aerial photographs by multiplex methods

Aerial photographs taken 1953. Advance field check 1954

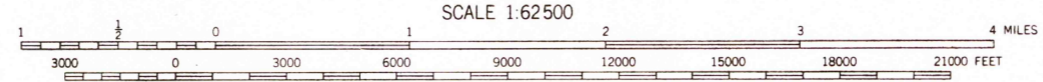
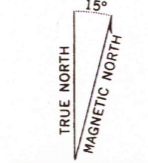
Polyconic projection. 1927 North American datum

10,000-foot grids based on Arizona coordinate system, west and central zones

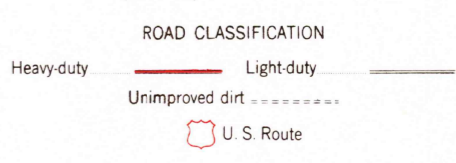
1000-meter Universal Transverse Mercator grid ticks, zone 12, shown in blue

Land lines unsurveyed in T. 39 N.-R. 2 W., T. 41 N.-R. 3 W., T. 42 N.-R. 3 and 4 W. and parts of T. 40 N.-R. 2 and 3 W., T. 41 N.-R. 4 W.

Unchecked elevations are shown in brown



CONTOUR INTERVAL 40 FEET
DATUM IS MEAN SEA LEVEL



FREDONIA, ARIZ.
N3645-W11230/15

THIS MAP COMPLIES WITH NATIONAL MAP ACCURACY STANDARDS
FOR SALE BY U.S. GEOLOGICAL SURVEY, DENVER 25, COLORADO OR WASHINGTON 25, D. C.
A FOLDER DESCRIBING TOPOGRAPHIC MAPS AND SYMBOLS IS AVAILABLE ON REQUEST

1954