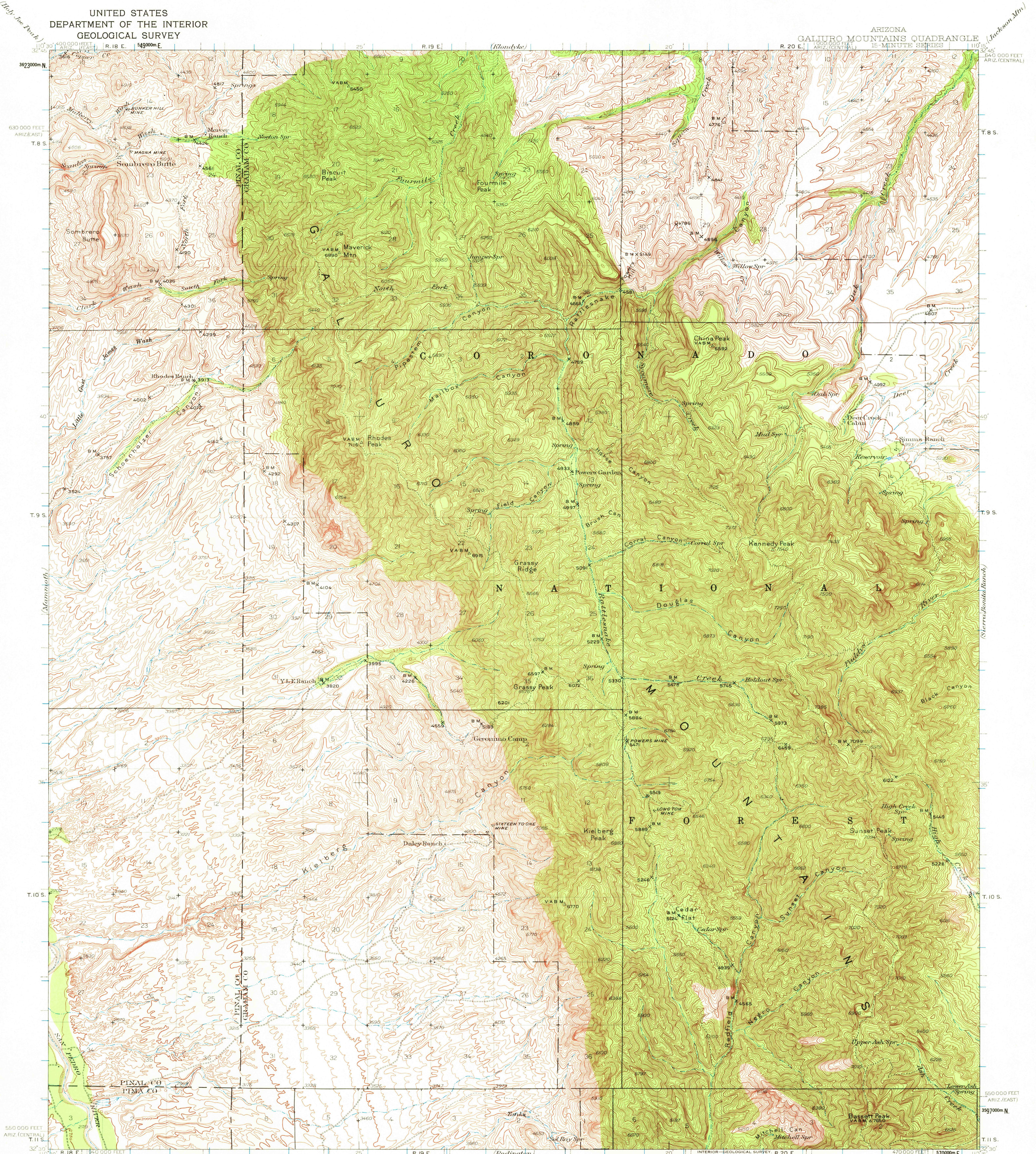
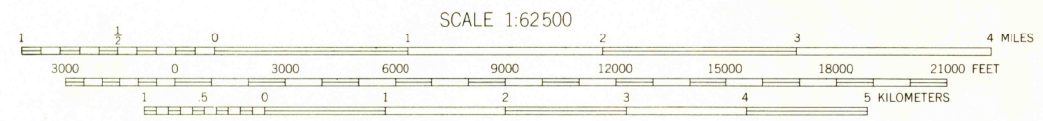


UNITED STATES  
DEPARTMENT OF THE INTERIOR  
GEOLOGICAL SURVEY

ARIZONA  
GALIURO MOUNTAINS QUADRANGLE  
15-MINUTE SERIES



Topography by Lee Morrison and J. Mark Holmes  
Surveyed in 1938



CONTOUR INTERVAL 50 FEET  
DATUM IS MEAN SEA LEVEL

FOR SALE BY U. S. GEOLOGICAL SURVEY, DENVER, COLORADO 80225 OR WASHINGTON, D. C. 20242  
A FOLDER DESCRIBING TOPOGRAPHIC MAPS AND SYMBOLS IS AVAILABLE ON REQUEST

INTERIOR—GEOLOGICAL SURVEY, R. 20 E.  
WASHINGTON, D. C. 1968

Polyconic projection. 1927 North American datum  
10 000-foot grids based on Arizona (East) and  
Arizona (Central) rectangular coordinate systems  
1000 meter Universal Transverse Mercator grid ticks,  
zone 12, shown in blue

ARIZONA  
**U.S.G.S.**  
QUADRANGLE LOCATION  
**FILE COPY**  
TOPOGRAPHIC DIVISION

**GALIURO MTS., ARIZ.**  
N3230—W11015/15  
1938

USGS  
Historical File  
Topographic Division  
4065  
NOV 22 1968