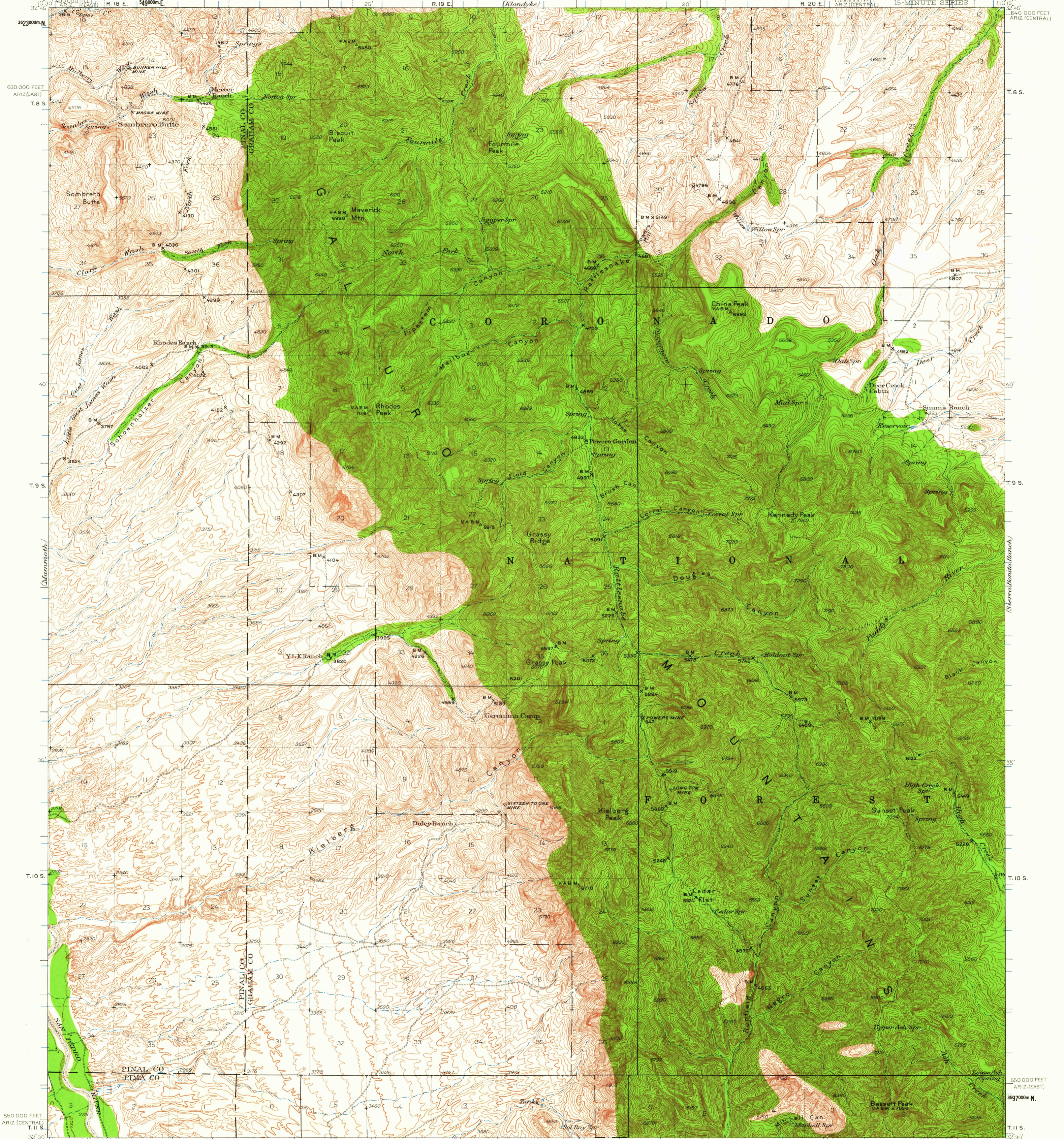
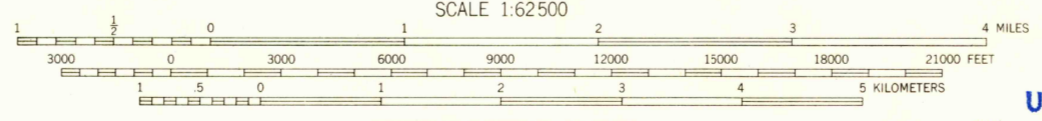


UNITED STATES  
DEPARTMENT OF THE INTERIOR  
GEOLOGICAL SURVEY

ARIZONA  
GALIURO MOUNTAINS QUADRANGLE  
15-MINUTE SERIES



Topography by Lee Morrison and J. Mark Holmes  
Surveyed in 1938



CONTOUR INTERVAL 50 FEET  
DATUM IS MEAN SEA LEVEL

USGS  
Historical File  
Topographic Division



Polycyclic projection. 1927 North American datum  
10 000-foot grids based on Arizona (East) and  
Arizona (Central) rectangular coordinate systems  
1000 meter Universal Transverse Mercator grid ticks,  
zone 12, shown in blue

U.S.G.S. GALIURO MTS., ARIZ.  
N3230-W11015/15

1938

FOR SALE BY U. S. GEOLOGICAL SURVEY, DENVER 25, COLORADO OR WASHINGTON 25, D. C.  
A FOLDER DESCRIBING TOPOGRAPHIC MAPS AND SYMBOLS IS AVAILABLE ON REQUEST

FILE COPY  
TOPOGRAPHIC DIVISION

2200