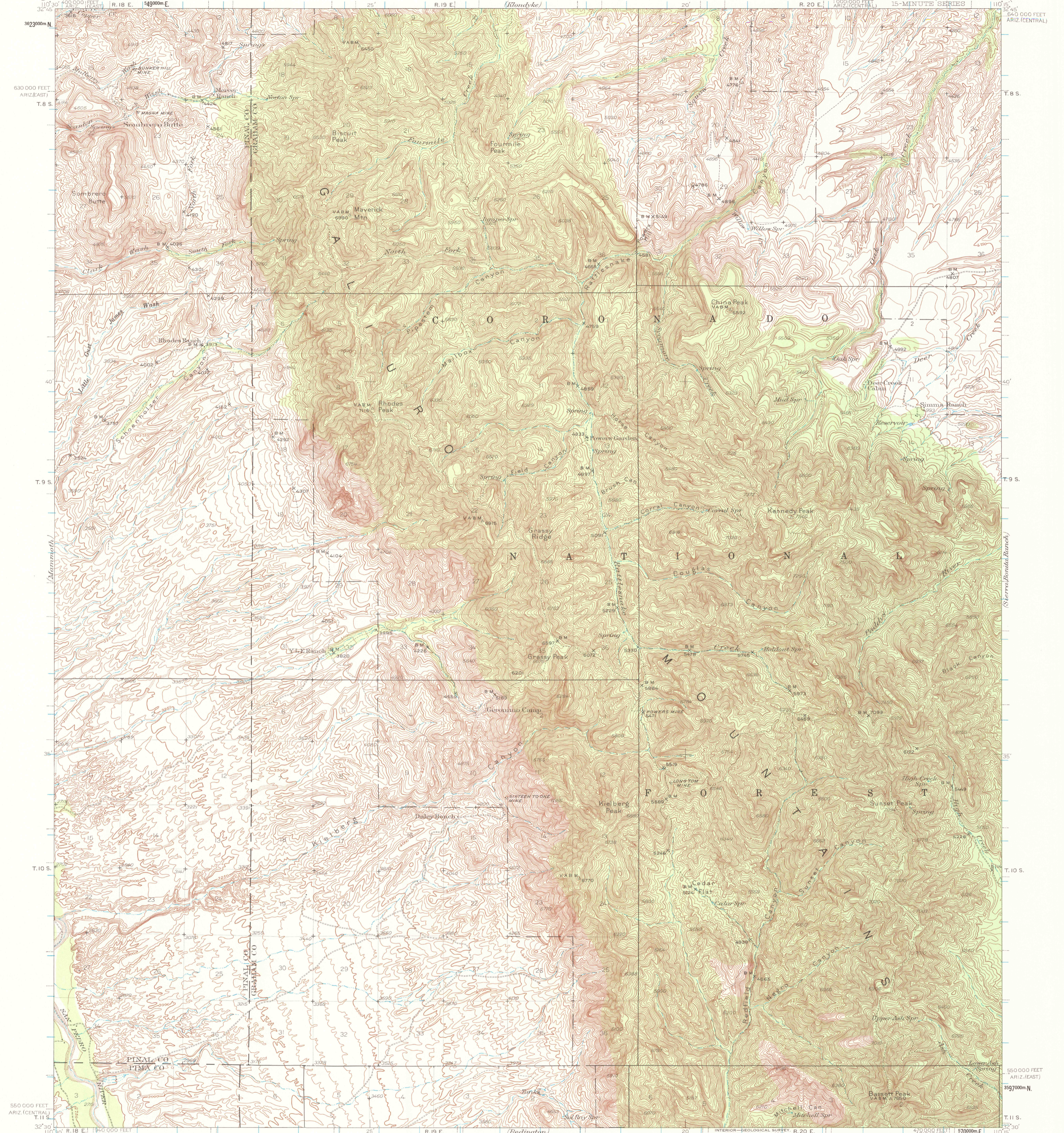


UNITED STATES  
DEPARTMENT OF THE INTERIOR  
GEOLOGICAL SURVEY

ARIZONA  
GALIURO MOUNTAINS QUADRANGLE  
15-MINUTE SERIES



Topography by Lee Morrison and J. Mark Holmes  
Surveyed in 1935

SCALE 1:62500

CONTOUR INTERVAL 50 FEET  
DATUM IS MEAN SEA LEVEL

Polyconic projection. 1927 North American datum  
10 000-foot grids based on Arizona (East) and  
Arizona (Central) rectangular coordinate systems  
1000 meter Universal Transverse Mercator grid ticks,  
zone 12, shown in blue

GALIURO MTS., ARIZ.  
N3230-W11015/15  
1938

FOR SALE BY U. S. GEOLOGICAL SURVEY, DENVER, COLORADO 80225 OR WASHINGTON, D. C. 20242  
A FOLDER DESCRIBING TOPOGRAPHIC MAPS AND SYMBOLS IS AVAILABLE ON REQUEST

RETURN TO:  
USGS NMD HISTORICAL MAP ARCHIVES