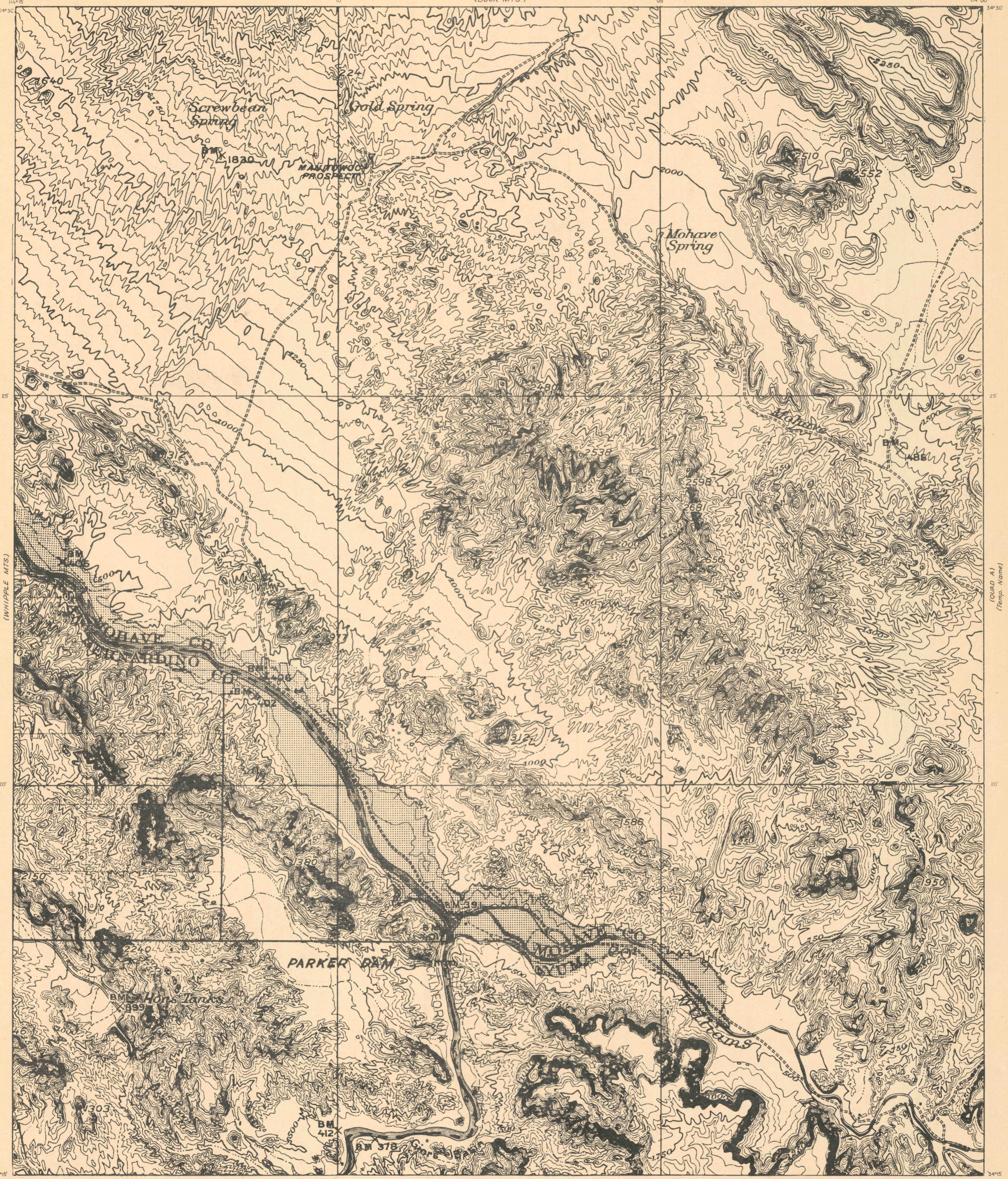
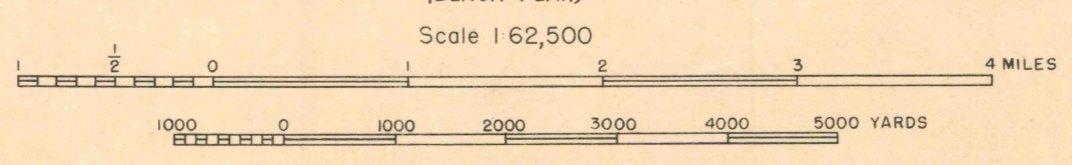


(QUAD B)
(Temp Name)

(BUCK MTS.)

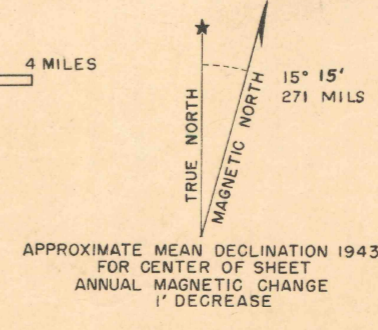


651 ENGR. V791
First Edition 1943



CONTOUR INTERVAL 50 FEET
DATUM IS MEAN SEA LEVEL

NOTE: OFFICERS USING THIS MAP WILL MARK HEREON CORRECTIONS AND ADDITIONS WHICH COME TO THEIR ATTENTION AND MAIL DIRECT TO THE CHIEF OF ENGINEERS, WASHINGTON, D. C.



APPROXIMATE MEAN DECLINATION 1943
FOR CENTER OF SHEET
ANNUAL MAGNETIC CHANGE
1" DECREASE

Prepared under the direction of the Commanding General, California-Arizona Maneuver Area, by The 651st Engineer Topographic Battalion, U. S. Army, 1943.
Topography by photographic enlargement from Parker, Arizona-California 30' Quadrangle, 1:125,000, U. S. Geological Survey; surveyed in 1902-1903 and 1909; edition of Mar. 1911, reprinted in 1921.
Polyconic Projection.

FILE COPY
Map Information Office

(TOPACK)

(WHIPPLE MTS.)

(PARKER)

(QUAD A)
(Temp Name)

(BUCKSKIN MTS. W)