

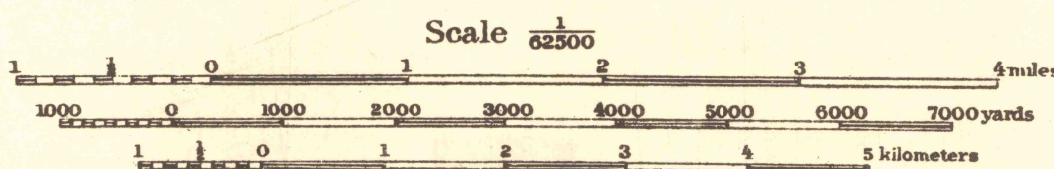
Base Map U. S. Geological Survey Engraving.

J. N. Hodges, Major, Corps of Engineers, Engineer. Eighth Corps Area,  
Robt. C. Hunter, Captain, Deputy, Corps of Engineers, Acting Chief of Map Section.  
A. Drouet, Surveyor, Chief Draftsman.  
A. K. Greene, Corp. Enl. Det. Office Engr., 8th C. A. Draftsman

Originally revised under direction of Department  
Engineer, Southern Department. 1916.

Area revised by reconnaissance methods under direction of  
Engineer, Eighth Corps Area, by Capt. P. E. Bermel, C of E., 1922.

Good road  
Poor road  
Trail  
701

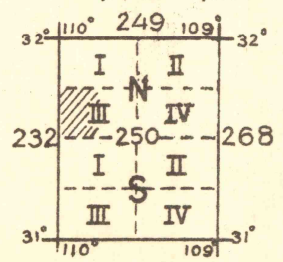


Contour Interval 100 feet  
Datum is mean sea level

FIVE THOUSAND YARD GRID COMPUTED FROM "GRID SYSTEM FOR PROGRESSIVE MAPS  
IN THE U. S. ZONE "F" U. S. C. & G. S. SPECIAL PUBLICATION NO. 59  
(THE LAST THREE DIGITS OF THE GRID NUMBERS ARE OMITTED)

NOTE: USERS OF THIS MAP ARE REQUESTED TO MARK HEREON CORRECTIONS AND ADDITIONS WHICH COME  
TO THEIR ATTENTION AND MAIL DIRECT TO "ENGINEER, EIGHTH CORPS AREA, FT. SAM HOUSTON, TEX."

Polyconic Projection North American Datum



APPROXIMATE MEAN  
DECLINATION 1922

Enlarged by photography from 30 minute quadrangle  
on Polyconic Projection North American Datum placing  
the medial meridian on the right edge of this sheet.

EIGHTH CORPS AREA ENGINEER REPRODUCTION PLANT  
1926

GLEESON-ARIZ.