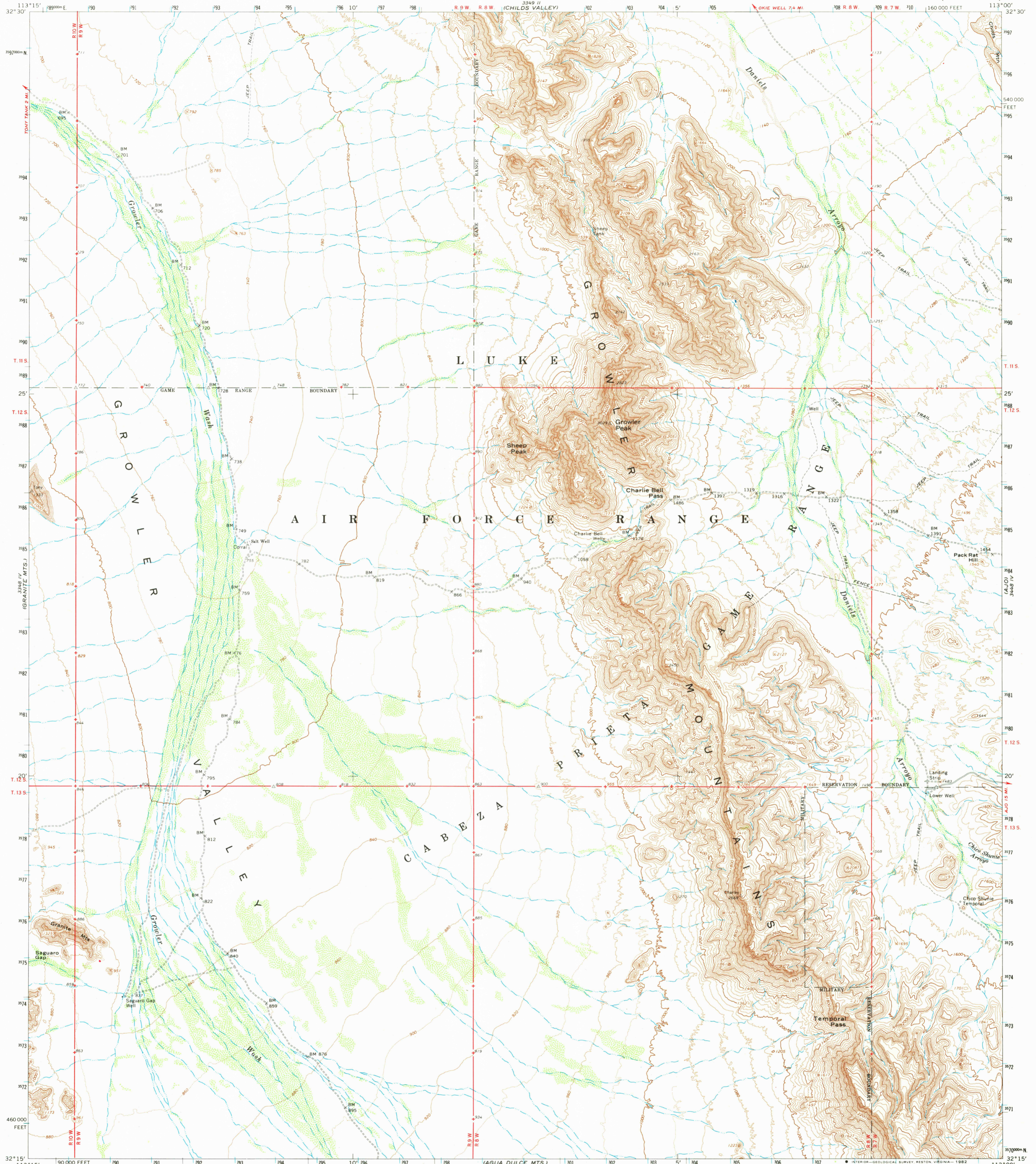


AGUILA MTS.
3349 IV

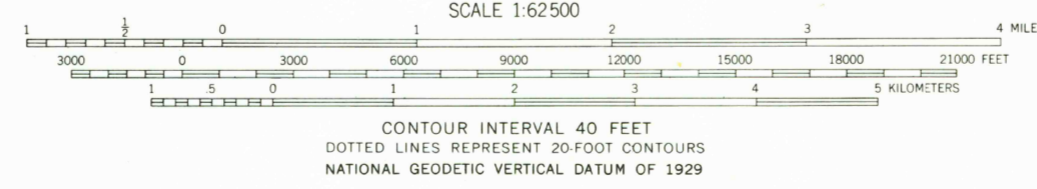
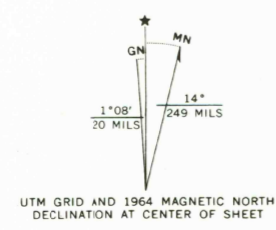
UNITED STATES
DEPARTMENT OF THE INTERIOR
GEOLOGICAL SURVEY

GROWLER PEAK QUADRANGLE
ARIZONA-PIMA CO.
15 MINUTE SERIES (TOPOGRAPHIC)

3349 II
(MIDWAY)



Mapped, edited, and published by the Geological Survey
Control by USGS, USC&GS, and USCE
Topography by photogrammetric methods from aerial
photographs taken 1961. Field checked 1964
Polyconic projection. 1927 North American datum
10,000-foot grid based on Arizona coordinate system,
central zone
1000-meter Universal Transverse Mercator grid ticks,
zone 12, shown in blue
To place on the predicted North American datum 1983
move the projection lines 6 meters south and
88 meters east
Where omitted, land lines have not been established
There may be private inholdings within the boundaries of
the National or State reservations shown on this map



ROAD CLASSIFICATION
Light duty —————
Unimproved dirt - - - - -

GROWLER PEAK, ARIZ.
N3215-W11300/15

1964
DMA 3348 I-SERIES V798

THIS MAP COMPLIES WITH NATIONAL MAP ACCURACY STANDARDS
FOR SALE BY U. S. GEOLOGICAL SURVEY, DENVER, COLORADO 80225, OR RESTON, VIRGINIA 22092
A FOLDER DESCRIBING TOPOGRAPHIC MAPS AND SYMBOLS IS AVAILABLE ON REQUEST

JUL 7 1964
2700