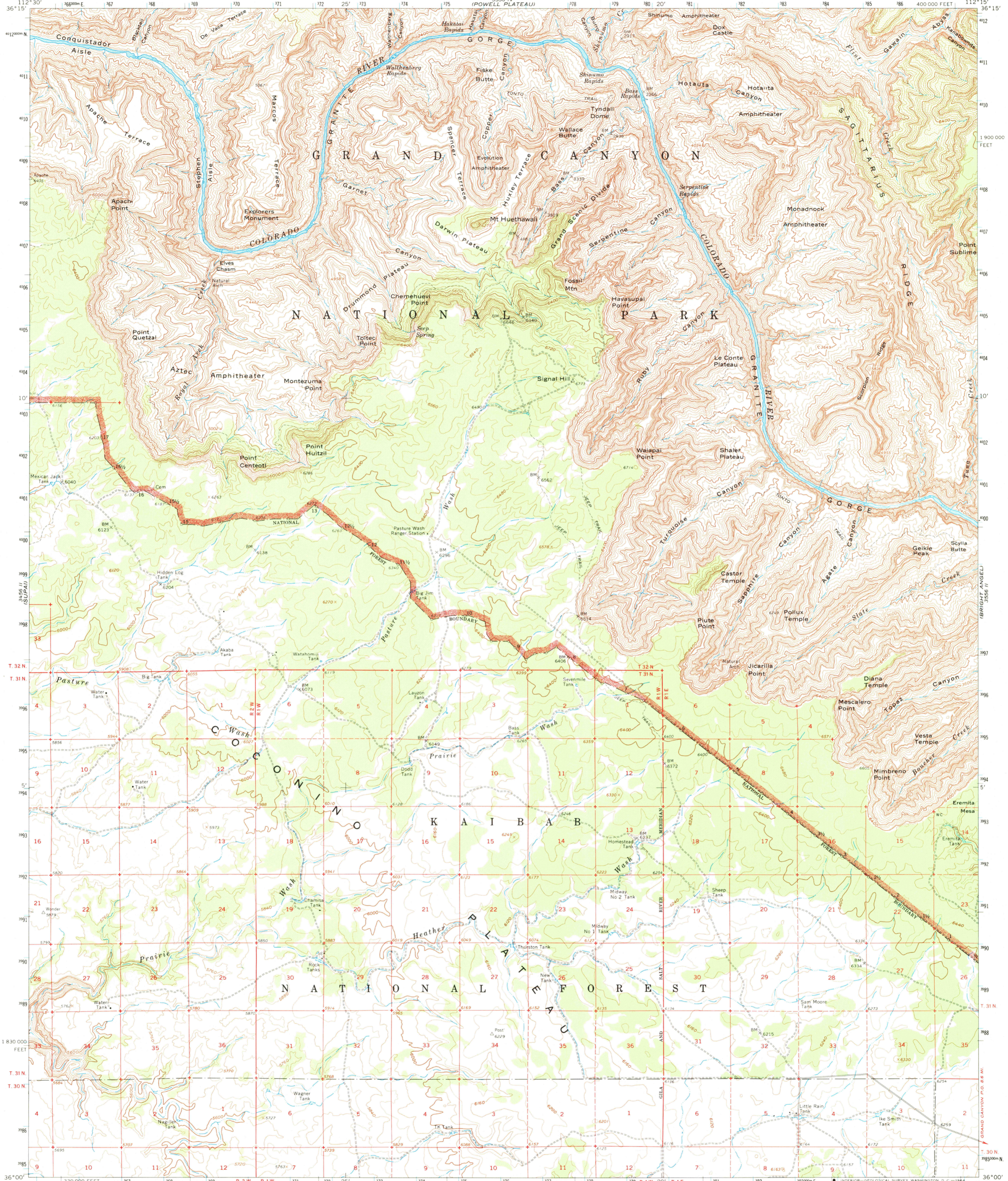


3556 I
HAVASUPI POINT

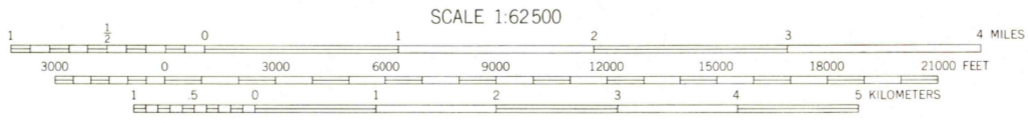
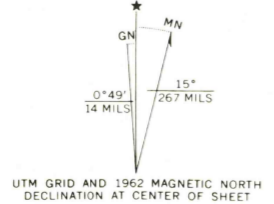
UNITED STATES
DEPARTMENT OF THE INTERIOR
GEOLOGICAL SURVEY

HAVASUPI POINT QUADRANGLE
ARIZONA-COCONINO CO.
15 MINUTE SERIES (TOPOGRAPHIC)

3556 I
IDE MOTTE PARK



Mapped, edited, and published by the Geological Survey
Control by USGS and USC&GS
Topography by photogrammetric methods from aerial
photographs taken 1954 and 1960. Field checked 1962
Polyconic projection. 1927 North American datum
10,000-foot grid based on Arizona coordinate system, central zone
1000-meter Universal Transverse Mercator grid ticks,
zone 12, shown in blue
Where omitted, land lines have not been established



CONTOUR INTERVAL 80 FEET
DOTTED LINES REPRESENT 40-FOOT CONTOURS
DATUM IS MEAN SEA LEVEL



ROAD CLASSIFICATION
Light duty ——— Unimproved dirt - - - - -

THIS MAP COMPLIES WITH NATIONAL MAP ACCURACY STANDARDS
FOR SALE BY U. S. GEOLOGICAL SURVEY, DENVER 25, COLORADO OR WASHINGTON 25, D. C.
A FOLDER DESCRIBING TOPOGRAPHIC MAPS AND SYMBOLS IS AVAILABLE ON REQUEST

HAVASUPI POINT, ARIZ.
N3600—W11215/15

1962
AMS 3556 III—SERIES V798

APR 24 1964