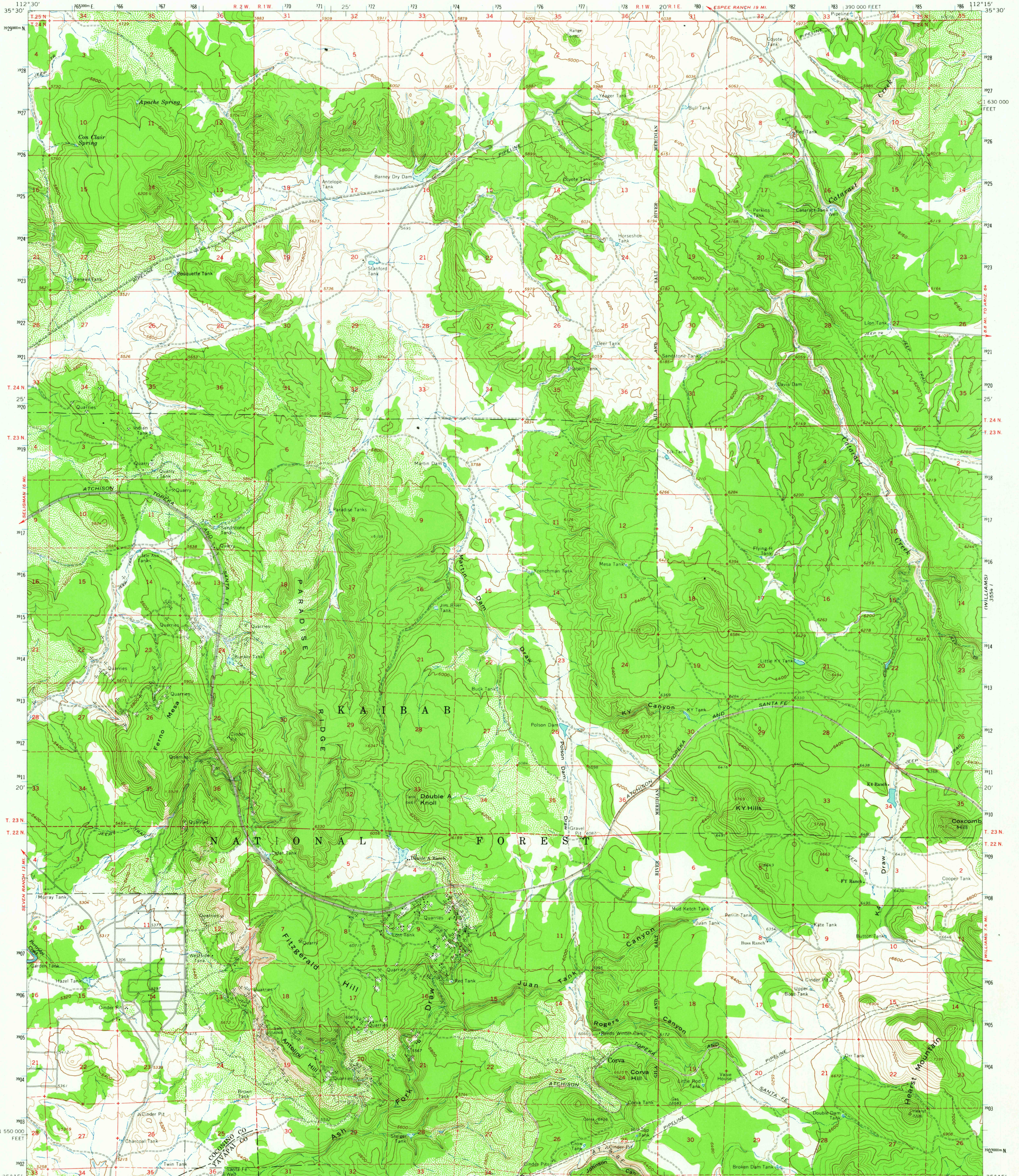
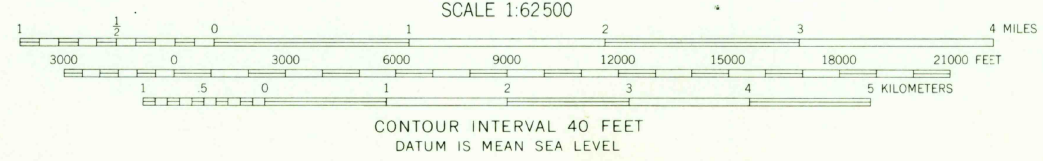
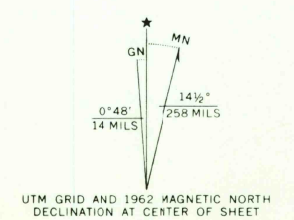


3554 IV (VALLEY)



Mapped, edited, and published by the Geological Survey
in cooperation with Arizona Interstate Stream Commission
Control by USGS and USC&GS
Topography by photogrammetric methods from aerial
photographs taken 1958. Field checked 1960 and 1962
Polyconic projection. 1927 North American datum
10,000-foot grid based on Arizona coordinate system, central zone
1000-meter Universal Transverse Mercator grid ticks,
zone 12, shown in blue



USGS
Historical File
Topographic Division

ROAD CLASSIFICATION
Light duty ——— Unimproved dirt - - - - -

U.S.G.S.
FILE COPY
TOPOGRAPHIC DIVISION

HEARST MTN., ARIZ. 2730
N3515-W11215/15
1962
AMS 3554 IV—SERIES V798

THIS MAP COMPLIES WITH NATIONAL MAP ACCURACY STANDARDS
FOR SALE BY U. S. GEOLOGICAL SURVEY, DENVER 25, COLORADO OR WASHINGTON 25, D. C.
A FOLDER DESCRIBING TOPOGRAPHIC MAPS AND SYMBOLS IS AVAILABLE ON REQUEST

DEC 1 1964

(BILL WILLIAMS MTA)