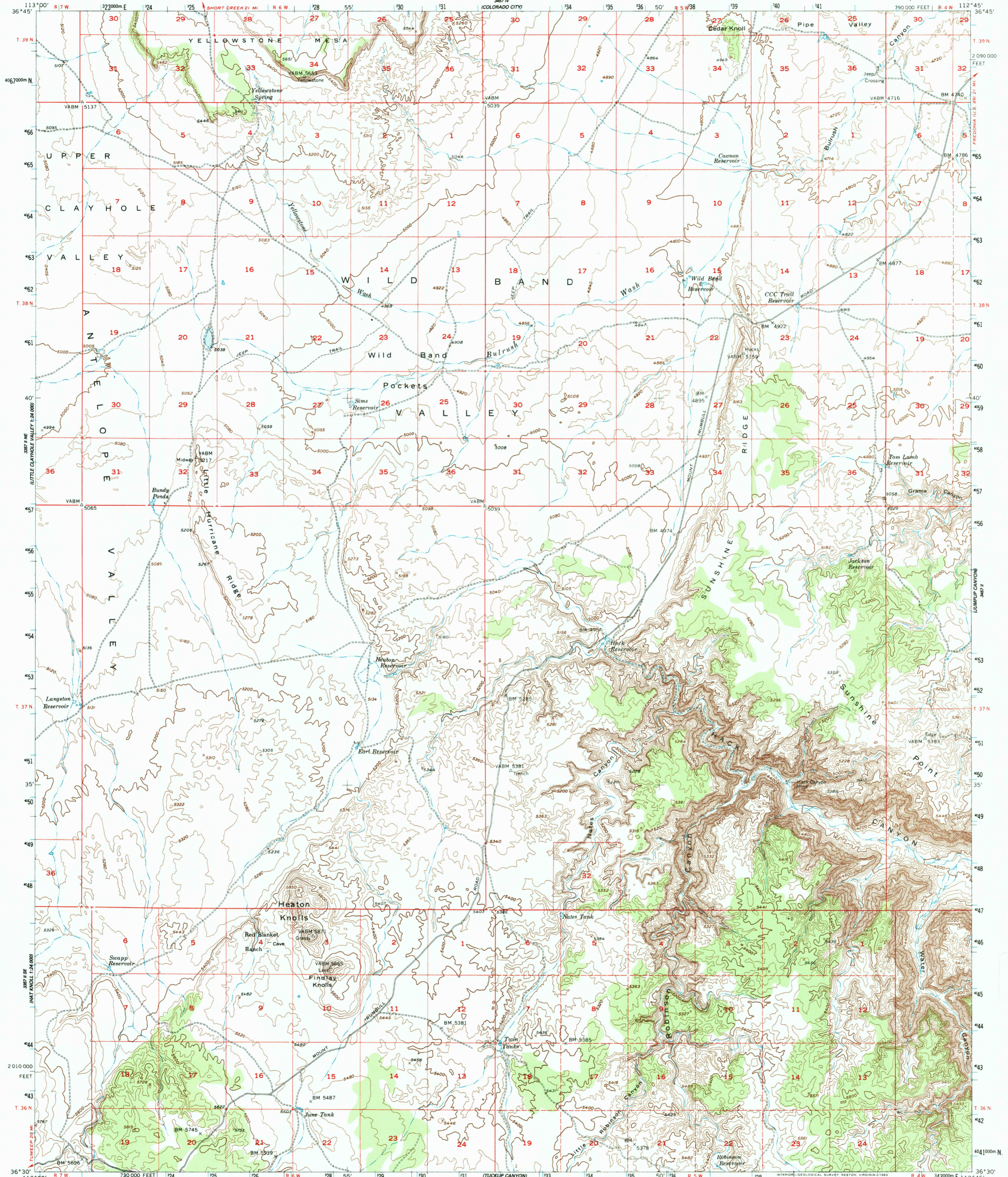


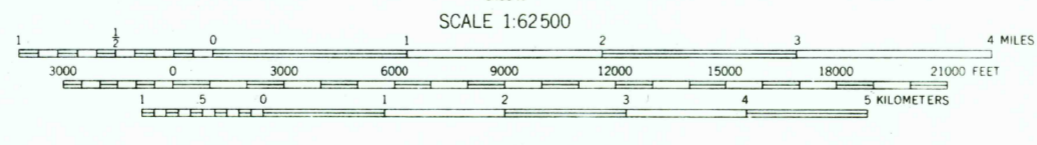
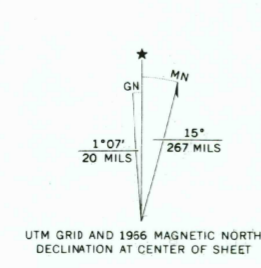
UNITED STATES  
DEPARTMENT OF THE INTERIOR  
GEOLOGICAL SURVEY

HEATON KNOLLS QUADRANGLE  
ARIZONA—MOHAVE CO.  
15 MINUTE SERIES (TOPOGRAPHIC)



USGS Library  
Reston, VA.  
Topo Archive

Mapped, edited, and published by the Geological Survey with cooperation by the Atomic Energy Commission Control by USGS and USC&GS  
Topography from aerial photographs by multiplex methods  
Aerial photographs taken 1953. Advance field check 1954  
Polyconic projection. 1927 North American datum  
10,000-foot grid based on Arizona coordinate system, west zone 12, shown in blue  
To place on the predicted North American Datum 1983 move the projection lines 5 meters north and 88 meters east  
Unchecked elevations are shown in brown



CONTOUR INTERVAL 40 FEET  
NATIONAL GEODETIC VERTICAL DATUM OF 1929



ROAD CLASSIFICATION  
Light-duty ——— Unimproved dirt - - - - -

HEATON KNOLLS, ARIZ.  
N3630—W11245/15

1954

DMA 3457 III—SERIES V798

THIS MAP COMPLIES WITH NATIONAL MAP ACCURACY STANDARDS  
FOR SALE BY U. S. GEOLOGICAL SURVEY, DENVER, COLORADO 80225, OR RESTON, VIRGINIA 22092  
A FOLDER DESCRIBING TOPOGRAPHIC MAPS AND SYMBOLS IS AVAILABLE ON REQUEST

MAY 06 1987