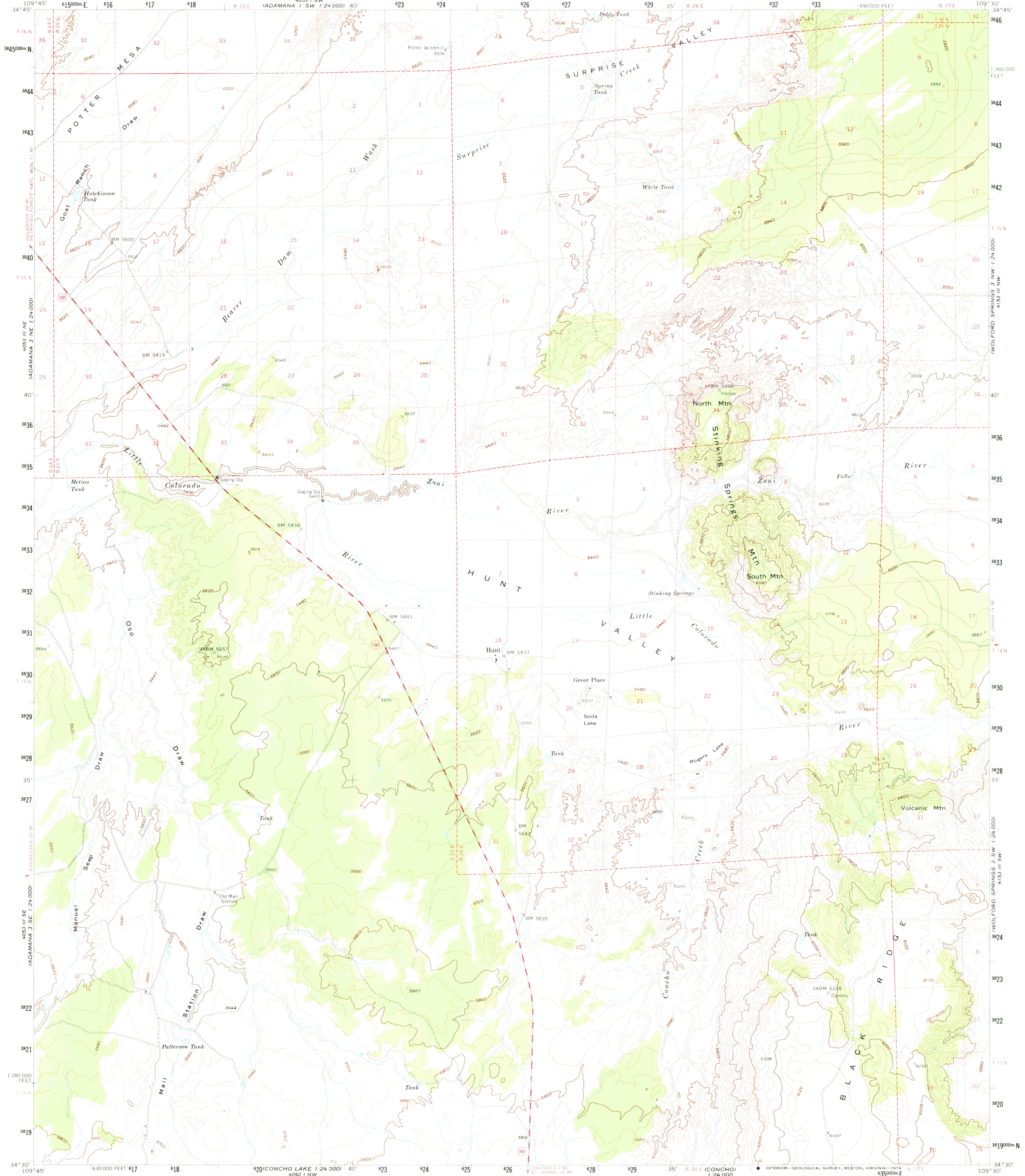


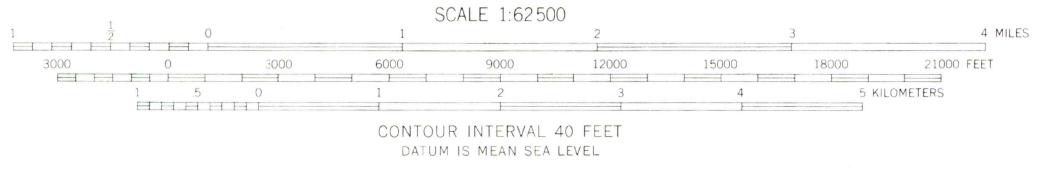
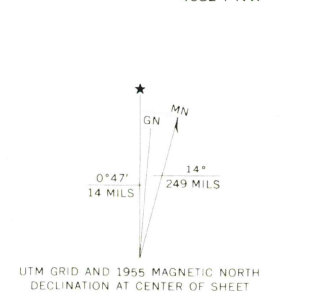
4053 IV  
(PETRIFIED FOREST)

UNITED STATES  
DEPARTMENT OF THE INTERIOR  
GEOLOGICAL SURVEY

HUNT QUADRANGLE  
ARIZONA—APACHE CO.  
15 MINUTE SERIES (TOPOGRAPHIC)



Mapped, edited, and published by the Geological Survey  
Control by USGS and USC&GS  
Topography from aerial photographs by multiple methods  
Aerial photographs taken 1953. Advance field check 1955  
Polyconic projection. 1927 North American datum  
10,000-foot grid based on Arizona coordinate system, east zone  
1000 Meter Universal Transverse Mercator grid ticks,  
zone 12, shown in blue  
Dashed land lines indicate approximate locations  
Unchecked elevations are shown in brown



THIS MAP COMPLIES WITH NATIONAL MAP ACCURACY STANDARDS  
FOR SALE BY U.S. GEOLOGICAL SURVEY, DENVER, COLORADO 80225, OR RESTON, VIRGINIA 22092  
A FOLDER DESCRIBING TOPOGRAPHIC MAPS AND SYMBOLS IS AVAILABLE ON REQUEST

USGS  
HISTORICAL FILE  
TOPOGRAPHIC DIVISION

HUNT, ARIZ.  
N3430—W10930/15  
1955  
AMS 4053 II—SERIES V798

FEB 27 1974

1640