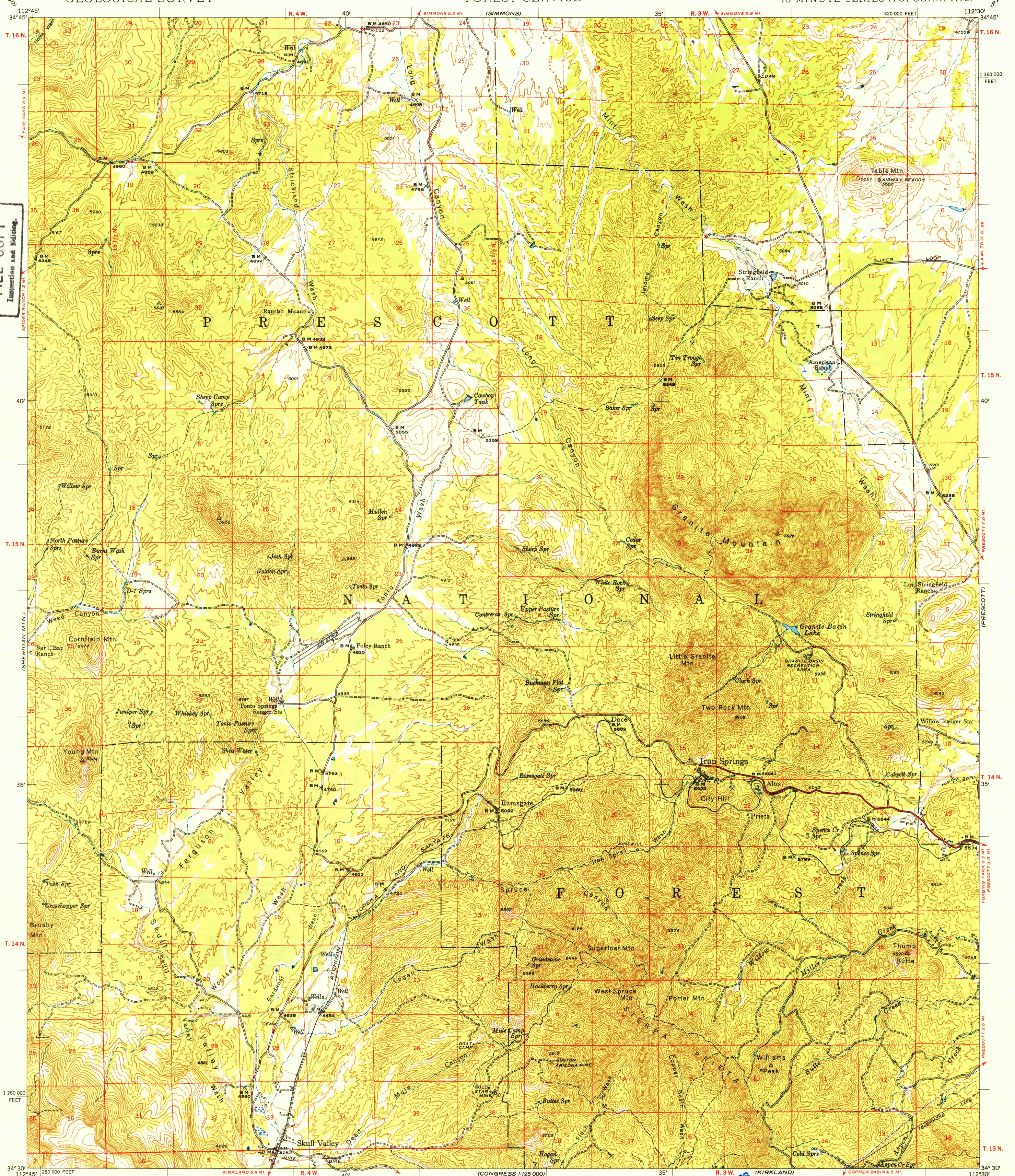
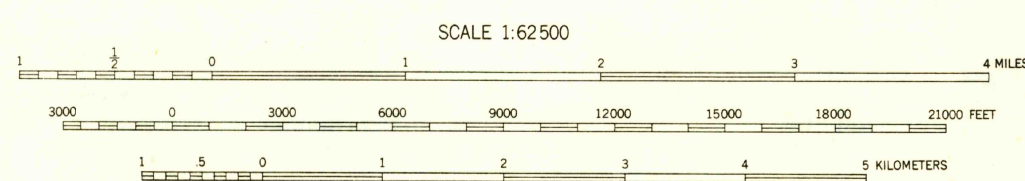
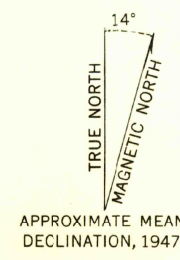


U.S.G.S.
FILE COPY
Inspection and Editing.



U.S.G.S.
FILE COPY
Inspection and Editing.

Mapped by the U.S. Forest Service
Edited and published by the Geological Survey
Control by USGS, USC&GS and USFS
Topography from aerial photographs by KEK plotter
Aerial photographs taken 1946. Field check 1947
Polyconic projection. 1927 North American datum
10,000-foot grid based on Arizona coordinate system,
central zone
No distinction is made between dwellings,
barns, commercial and industrial buildings
Dashed and lines indicate approximate location



USGS
Historical File
Topographic Division

ROAD CLASSIFICATION

HARD-SURFACE ALL WEATHER ROADS	DRY WEATHER ROADS
Heavy-duty ——— 4 LANE 16 LANE	Improved dirt ———
Medium-duty ——— 4 LANE 16 LANE	Unimproved dirt ———
Loose-surface, graded, or narrow hard-surface	-----
U. S. Route	State Route

U.S.G.S.
FILE COPY
Inspection and Editing.

IRON SPRINGS, ARIZ.
N3430-W11230/15
EDITION OF 1949