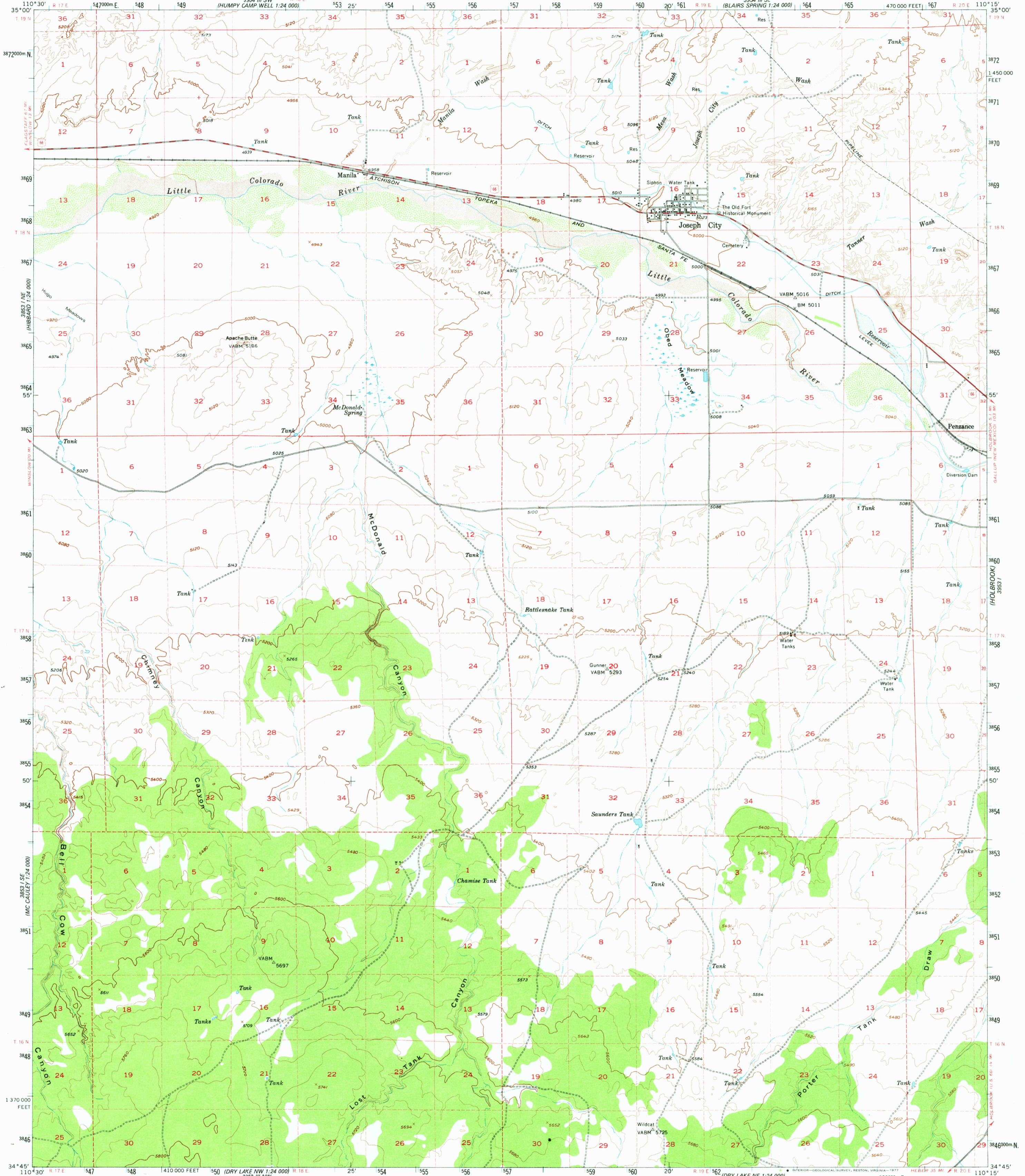
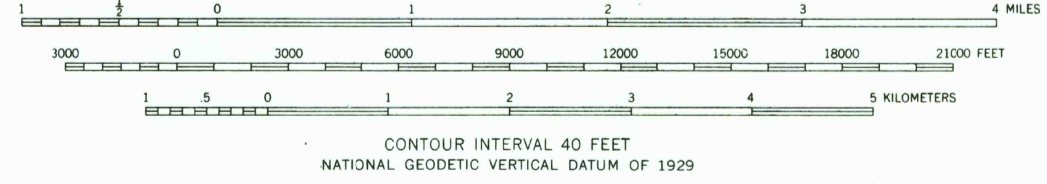
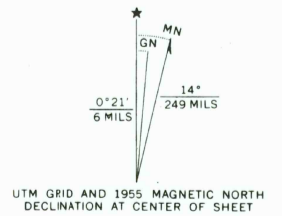


UNITED STATES
DEPARTMENT OF THE INTERIOR
GEOLOGICAL SURVEY

JOSEPH CITY QUADRANGLE
ARIZONA-NAVAJO CO.
15 MINUTE SERIES (TOPOGRAPHIC)



Mapped, edited, and published by the Geological Survey
Control by USGS and USC&GS
Topography from aerial photographs by multiplex methods
Aerial photographs taken 1953. Advance field check 1955
Photocopy projection. 1927 North American datum
10,000-foot grid based on Arizona coordinate system, east zone
1000-meter Universal Transverse Mercator grid ticks,
zone 12, shown in blue
Dashed land lines indicate approximate locations
Unchecked elevations are shown in brown



CONTOUR INTERVAL 40 FEET
NATIONAL GEODETIC VERTICAL DATUM OF 1929



ROAD CLASSIFICATION

Heavy-duty	Light-duty
Medium-duty	Unimproved dirt
U.S. Route	

This area also partially covered by 1:24,000 scale maps, available in black and white edition only, of St. Joseph 2 NE, St. Joseph 2 NW, and St. Joseph 2 SE 7.5 minute quadrangles, surveyed 1955

THIS MAP COMPLIES WITH NATIONAL MAP ACCURACY STANDARDS
FOR SALE BY U.S. GEOLOGICAL SURVEY, DENVER, COLORADO 80225, OR RESTON, VIRGINIA 22092
A FOLDER DESCRIBING TOPOGRAPHIC MAPS AND SYMBOLS IS AVAILABLE ON REQUEST

USGS
Historical File
Topographic Division

JOSEPH CITY, ARIZ.
N3445-W11015/15
1955
AMS 3953 IV-SERIES V798

FEB 23 1978

3300