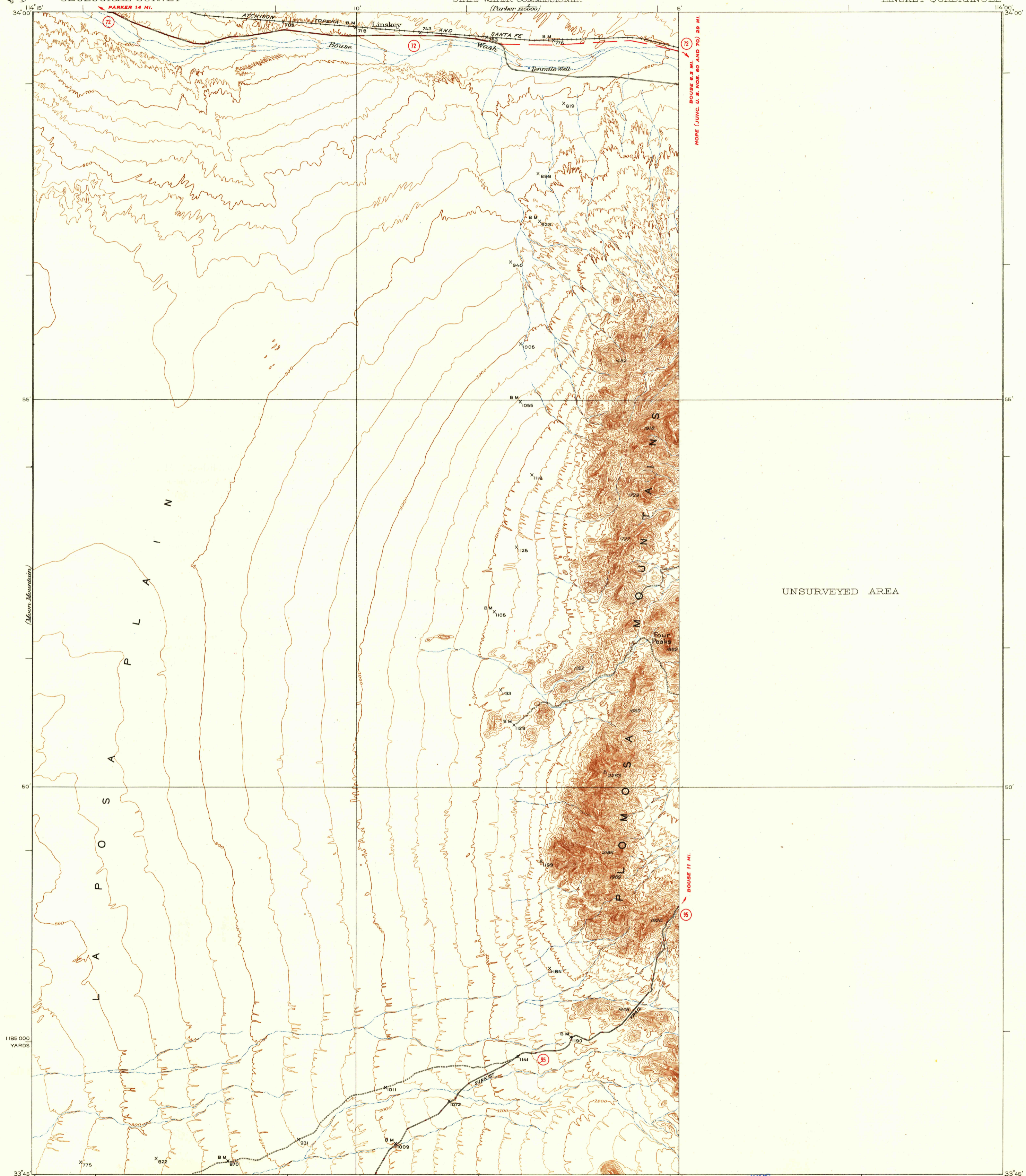


U. S. G. S.  
FILE COPY  
Inspection and Editing.

UNITED STATES  
DEPARTMENT OF THE INTERIOR  
GEOLOGICAL SURVEY

STATE OF ARIZONA  
STATE WATER COMMISSIONER  
(Parker 2500)

ARIZONA  
(YUMA COUNTY)  
LINSKEY QUADRANGLE



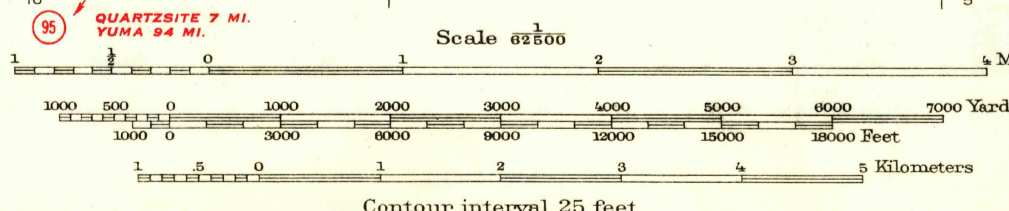
UNSURVEYED AREA

Topography by C.W.H. Nessler  
Surveyed in 1927

**ROAD CLASSIFICATION**  
1946  
Dependable hard surface  
heavy-duty road  
Secondary hard surface  
all weather road  
More than two lanes indicated along road with tick at point of change

Dry weather roads  
Loose-surface graded  
Unsurfaced, graded  
Dirt road

U. S. Route 15  
State Route 85



USGS  
Historical File  
Topographic Division

Polyconic projection, North American datum  
5000 yard grid based upon U.S. zone system, F

U. S. G. S.  
FILE COPY  
Inspection and Editing.

LINSKEY, ARIZ.  
Edition of 1930  
reprinted 1947  
N3345-W1400/15

APR 25 1947

2155