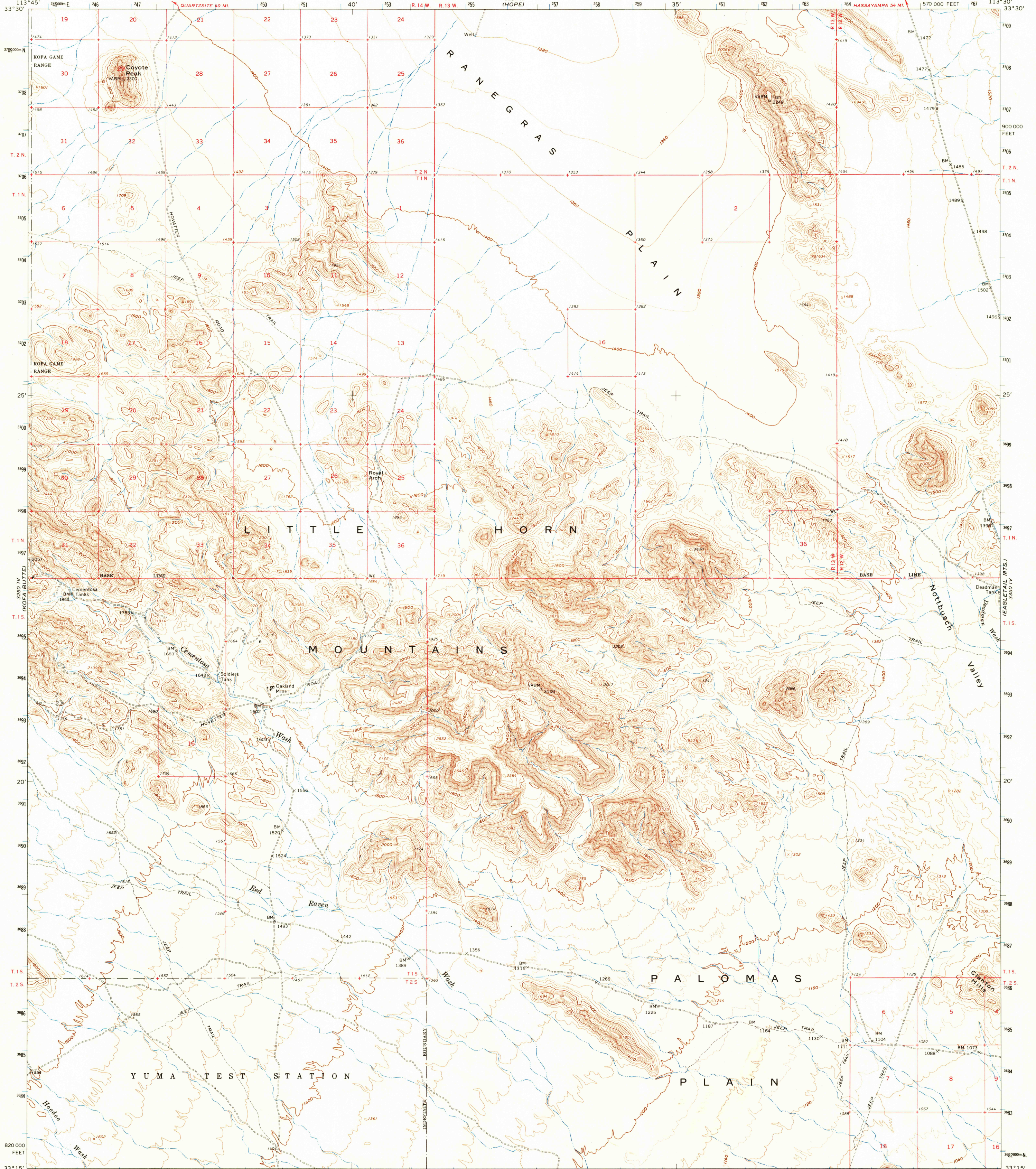
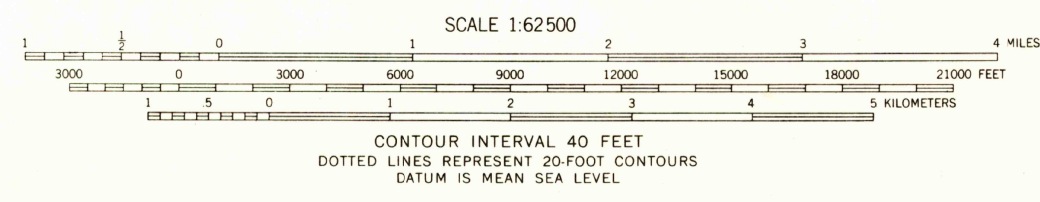
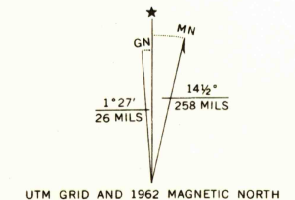


UNITED STATES  
DEPARTMENT OF THE INTERIOR  
GEOLOGICAL SURVEY

LITTLE HORN MTS. QUADRANGLE  
ARIZONA—YUMA CO.  
15 MINUTE SERIES (TOPOGRAPHIC)



Mapped, edited, and published by the Geological Survey  
Control by USGS and USC&GS  
Topography by photogrammetric methods from aerial  
photographs taken 1956 and 1960. Field checked 1962  
Polyconic projection. 1927 North American datum  
10,000-foot grid based on Arizona coordinate system, west zone  
1000-meter Universal Transverse Mercator grid ticks,  
zone 12, shown in blue  
Where omitted, land lines have not been established



USGS  
Historical File  
Topographic Division



ROAD CLASSIFICATION  
Unimproved dirt - - - - -

THIS MAP COMPLIES WITH NATIONAL MAP ACCURACY STANDARDS  
FOR SALE BY U. S. GEOLOGICAL SURVEY, DENVER 25, COLORADO OR WASHINGTON 25, D. C.  
A FOLDER DESCRIBING TOPOGRAPHIC MAPS AND SYMBOLS IS AVAILABLE ON REQUEST

LITTLE HORN MTS., ARIZ.  
N3315—W11330/15

1962  
AMS 3250 I—SERIES V798

DEC 17 1963  
2260