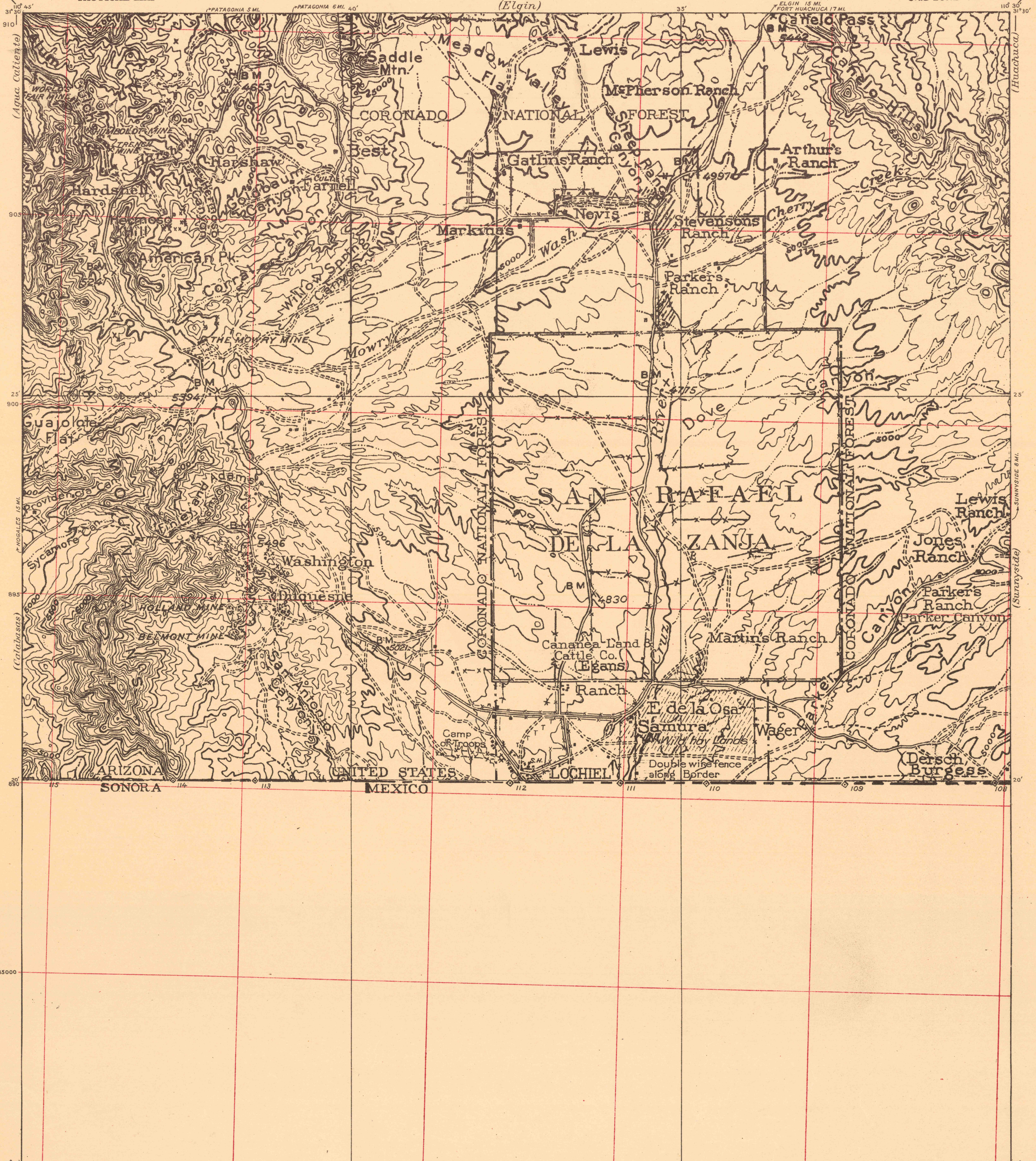


232-5-1-E



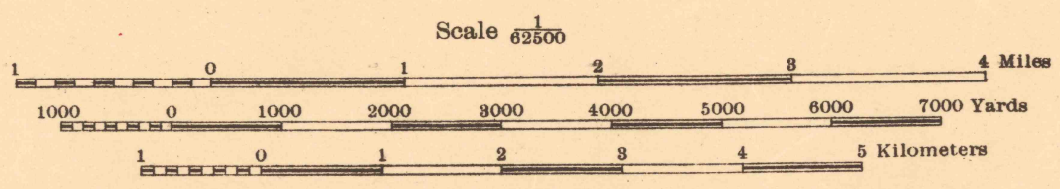
Base Map U.S. Geological Survey Engraving
Edgar Jadwin, Col. Corps of Engineers, Engineer.
W.N. Vance, Topo. Asst., Acting Chief of Map Section
A. Drouet, Chief Draftsman
A. Rehberg, Jr. and W.R. Wilson, Private 1st. Cl. Draftsman

Originally revised under direction of Department
Engineer, Southern Department, 1916.

Revised by reconnaissance methods under direction of
Engineer, Eighth Corps Area, by Capt. P. E. Bermer, C of E., 1922

Polyconic Projection North American Datum

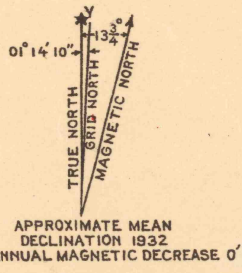
NOTE: Office revision Jan., 1932.



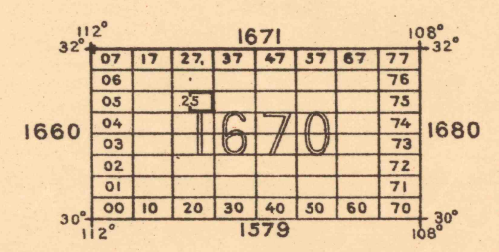
Scale 1/62500
Contour Interval 100 feet
Datum is mean sea level

FIVE THOUSAND YARD GRID COMPUTED FROM "GRID SYSTEM FOR PROGRESSIVE MAPS
IN THE U.S." ZONE F U.S.C.&G.S. SPECIAL PUBLICATION NO. 59
(THE LAST THREE DIGITS OF THE GRID NUMBERS ARE OMITTED)

NOTE: USERS OF THIS MAP ARE REQUESTED TO MARK HEREON CORRECTIONS AND ADDITIONS WHICH COME
TO THEIR ATTENTION AND MAIL DIRECT TO "ENGINEER, EIGHTH CORPS AREA, FT. SAM HOUSTON, TEX."



EIGHTH CORPS AREA ENGINEER REPRODUCTION PLANT 1932.



Enlarged by photography from 30 minute quadrangle
on Polyconic Projection North American Datum placing the
medial meridian on the left edge of this sheet.