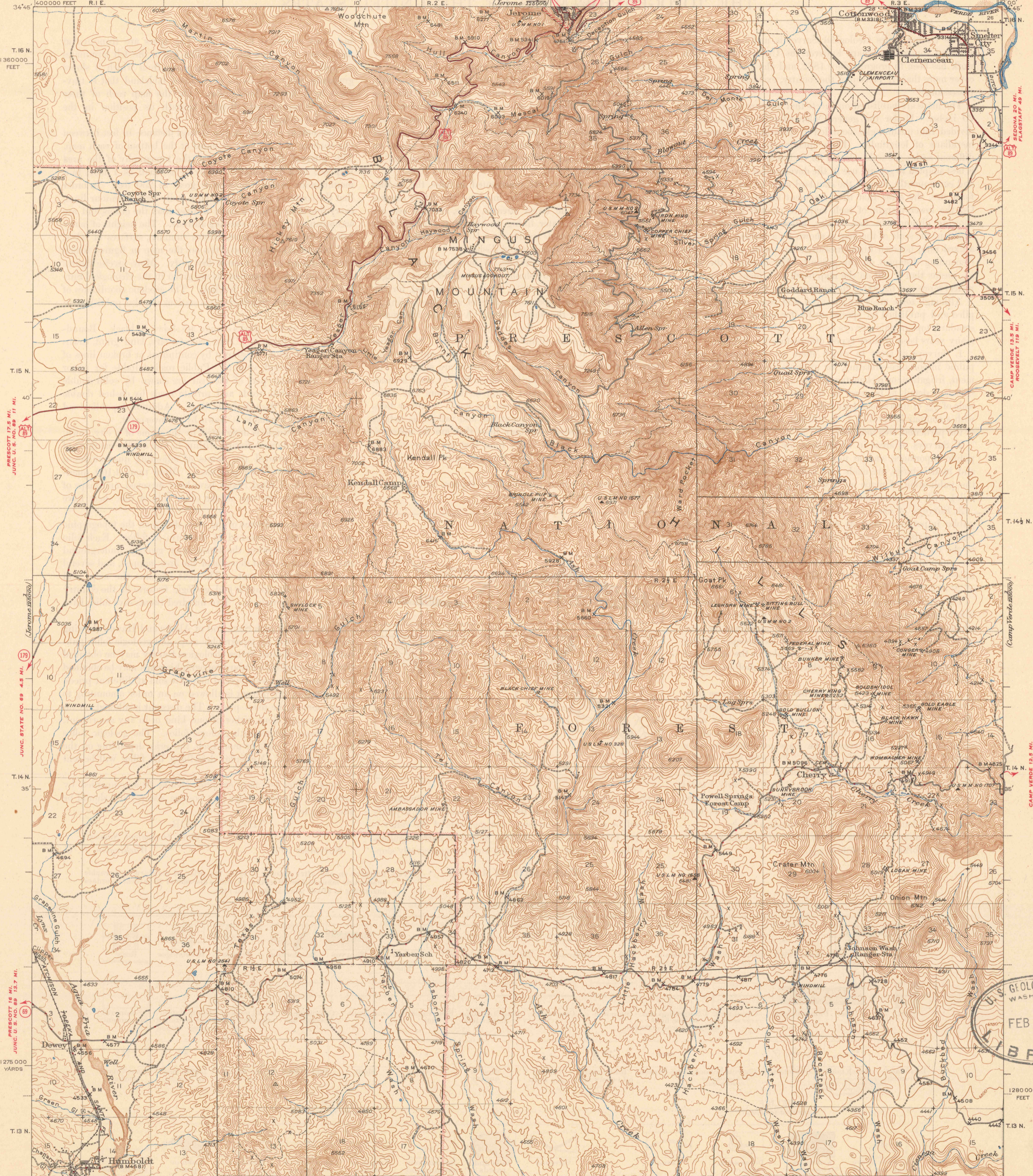


UNITED STATES
DEPARTMENT OF THE INTERIOR
GEOLOGICAL SURVEY

ARIZONA
(YAVAPAI COUNTY)
MINGUS MOUNTAIN QUADRANGLE
15-MINUTE SERIES



Mapped by the Geological Survey
1944

MAYER 8.5 MI.
PHOENIX 8.5 MI.

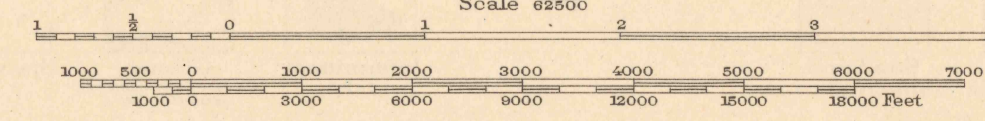
ROAD CLASSIFICATION
1946

Dependable hard-surface
heavy-duty road
Secondary hard-surface
all-weather road
Dirt road

By weather roads
Loose-surface graded
Unsurfaced, graded
Dirt road

U.S. Route
State Route
More than two lanes indicated along road with tick at point of change
3 LANE, 4 LANE

APPROXIMATE MEAN
DECLINATION, 1944



Contour interval 50 feet
Datum is mean sea level

Certain land lines are omitted
because of insufficient data.
All recovered corners are shown

Polyconic projection, 1927 North American datum
5000 yard grid based on U.S. zone system, F
10 000 foot grid based on Arizona (Central)
rectangular coordinate system

MINGUS MTN., ARIZ.
Edition of 1947
N3430-W1200/15