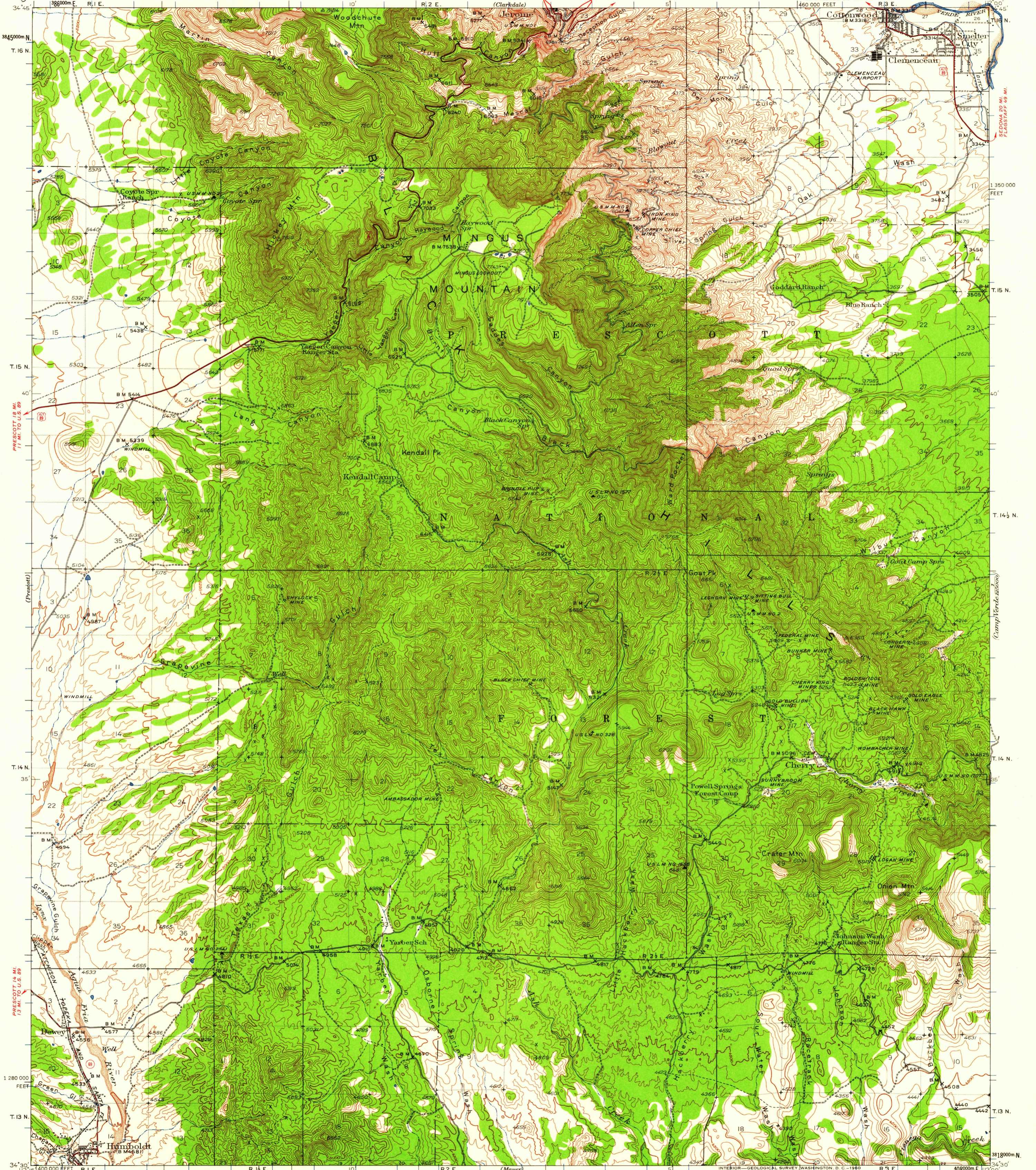


UNITED STATES
DEPARTMENT OF THE INTERIOR
GEOLOGICAL SURVEY

ARIZONA
(YAVAPAI COUNTY)
MINGUS MOUNTAIN QUADRANGLE
15-MINUTE SERIES



Mapped by the Geological Survey
1944
MAYER 8 MI.
PHOENIX (VIC CENTER) 80 MI.

ROAD CLASSIFICATION

Heavy-duty ——— Light-duty ———
Medium-duty ——— Unimproved dirt - - - - -

U.S. Route State Route

SCALE 1:62,500

CONTOUR INTERVAL 50 FEET
DATUM IS MEAN SEA LEVEL

APPROXIMATE MEAN DECLINATION, 1944

Certain land lines are omitted because of insufficient data. All recovered corners are shown.

Polyconic projection. 1927 North American datum. 10,000-foot grid based on Arizona (Central) rectangular coordinate system. 1000-meter Universal Transverse Mercator grid ticks, zone 12, shown in blue.

U.S.G.S.
FILE COPY
TOPOGRAPHIC DIVISION

MINGUS MTN., ARIZ.
N3430-W11200/15

1944

FOR SALE BY U. S. GEOLOGICAL SURVEY, DENVER 25, COLORADO OR WASHINGTON 25, D. C.
A FOLDER DESCRIBING TOPOGRAPHIC MAPS AND SYMBOLS IS AVAILABLE ON REQUEST

Jul 11 1950
2040