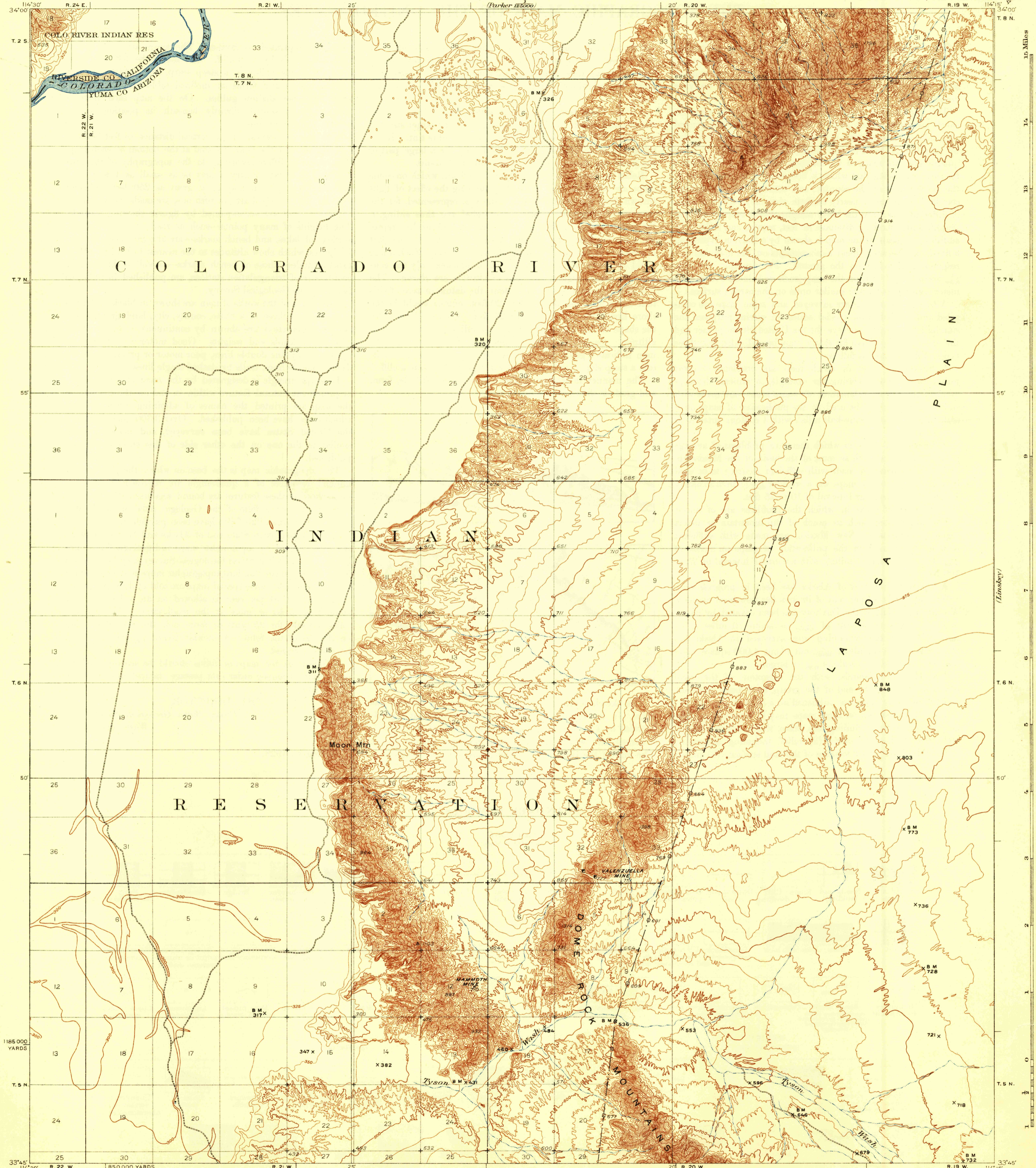


U. S. G. S. FILE COPY
Inspection and Editing.

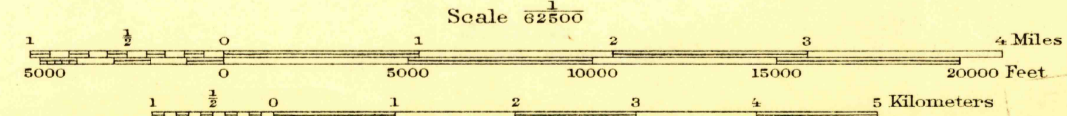
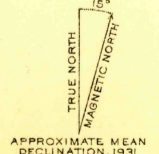
DEPARTMENT OF THE INTERIOR
U. S. GEOLOGICAL SURVEY

STATE OF ARIZONA
GEO. W. P. HUNT, GOVERNOR
FRANK P. TROTT, STATE WATER COMMISSIONER
(Parker 18500)

ARIZONA-CALIFORNIA
MOON MTN. QUADRANGLE



1185 000 YARDS
Topography by C.W.H. Nessler and E.S. Rickard
Control by U.S. Geological Survey
Surveyed in 1927 and 1931



Contour interval 25 feet
Datum is mean sea level

USGS
Historical File
Topographic Division
U. S. G. S. FILE COPY
Inspection and Editing.

Polyconic projection, North American datum
5000 yard grid based upon U.S. zone system, F

MOON MTN. ARIZ.-CAL.
Edition of 1932

NOV 23 1932 (1915) 1915