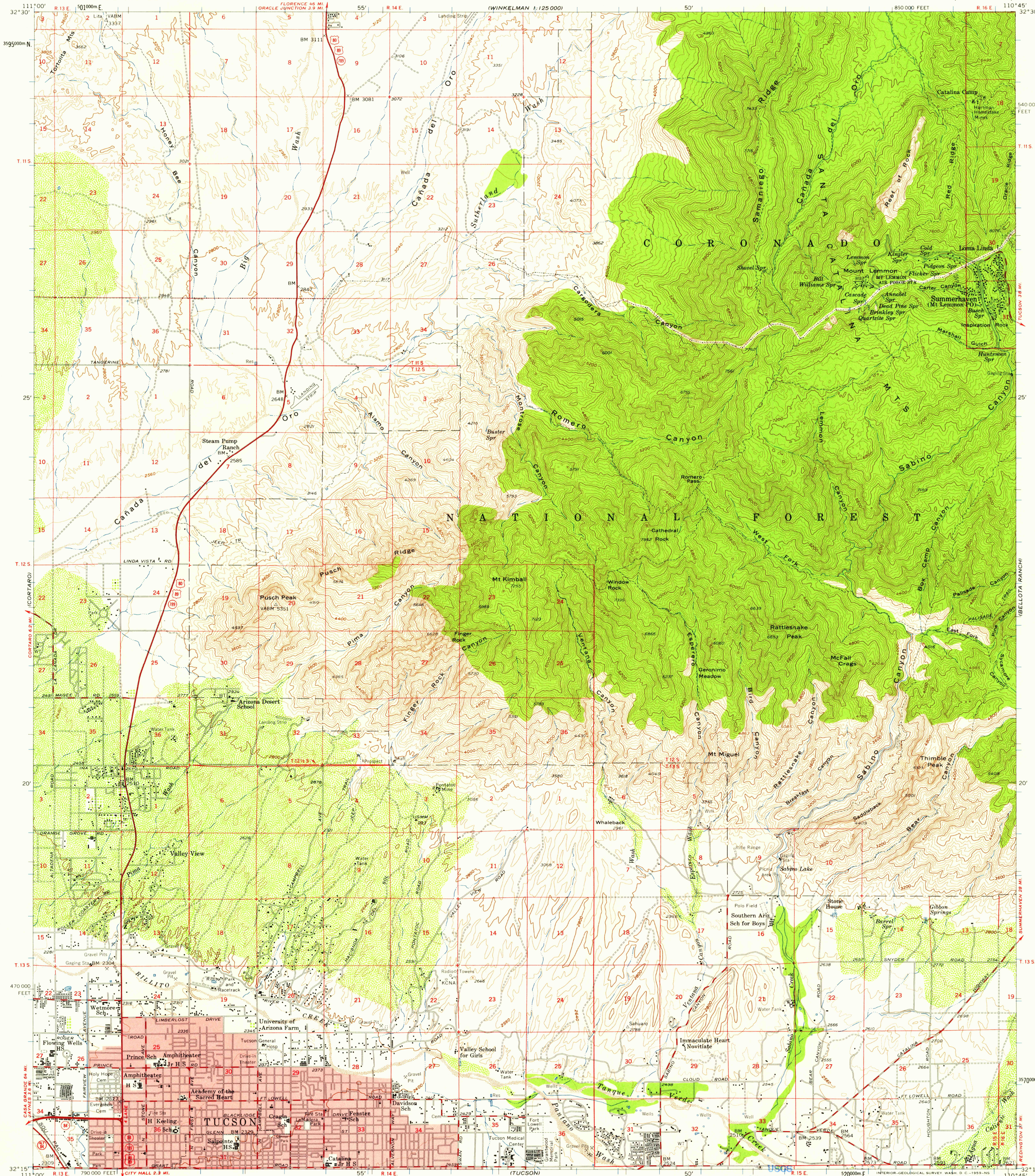


UNITED STATES
DEPARTMENT OF THE INTERIOR
GEOLOGICAL SURVEY

MOUNT LEMMON QUADRANGLE
ARIZONA-PIMA CO.
15 MINUTE SERIES (TOPOGRAPHIC)



Mapped, edited, and published by the Geological Survey
Control by USGS, USC&GS, and USCE
Topography from aerial photographs by photogrammetric methods
and by planetable surveys 1957. Aerial photographs taken 1953-1954
Polyconic projection. 1927 North American datum
10,000-foot grid based on Arizona coordinate system, central zone
1000-meter Universal Transverse Mercator grid ticks,
zone 12, shown in blue
Red tint indicates area in which only
landmark buildings are shown
Unchecked elevations are shown in brown

SCALE 1:62,500
1 2 3 4 MILES
3000 6000 9000 12000 15000 18000 21000 FEET
CONTOUR INTERVAL 80 FEET
DOTTED LINES REPRESENT 40-FOOT CONTOURS
DATUM IS MEAN SEA LEVEL

ROAD CLASSIFICATION
Heavy-duty ——— Light-duty ———
Medium-duty ——— Unimproved dirt ———
U. S. Route ——— State Route ———
The south half of this area also covered by 1:24,000
scale maps of Tucson North and Sabino Canyon
7.5 minute quadrangles surveyed 1957
U.S.G.S. FILE COPY
TOPOGRAPHIC DIVISION
MOUNT LEMMON, ARIZ.
N3215-W11045/15
1957

THIS MAP COMPLIES WITH NATIONAL MAP ACCURACY STANDARDS
FOR SALE BY U. S. GEOLOGICAL SURVEY, DENVER 2, COLORADO OR WASHINGTON 25, D. C.
A FOLDER DESCRIBING TOPOGRAPHIC MAPS AND SYMBOLS IS AVAILABLE ON REQUEST

MAY - 5 1959
3420