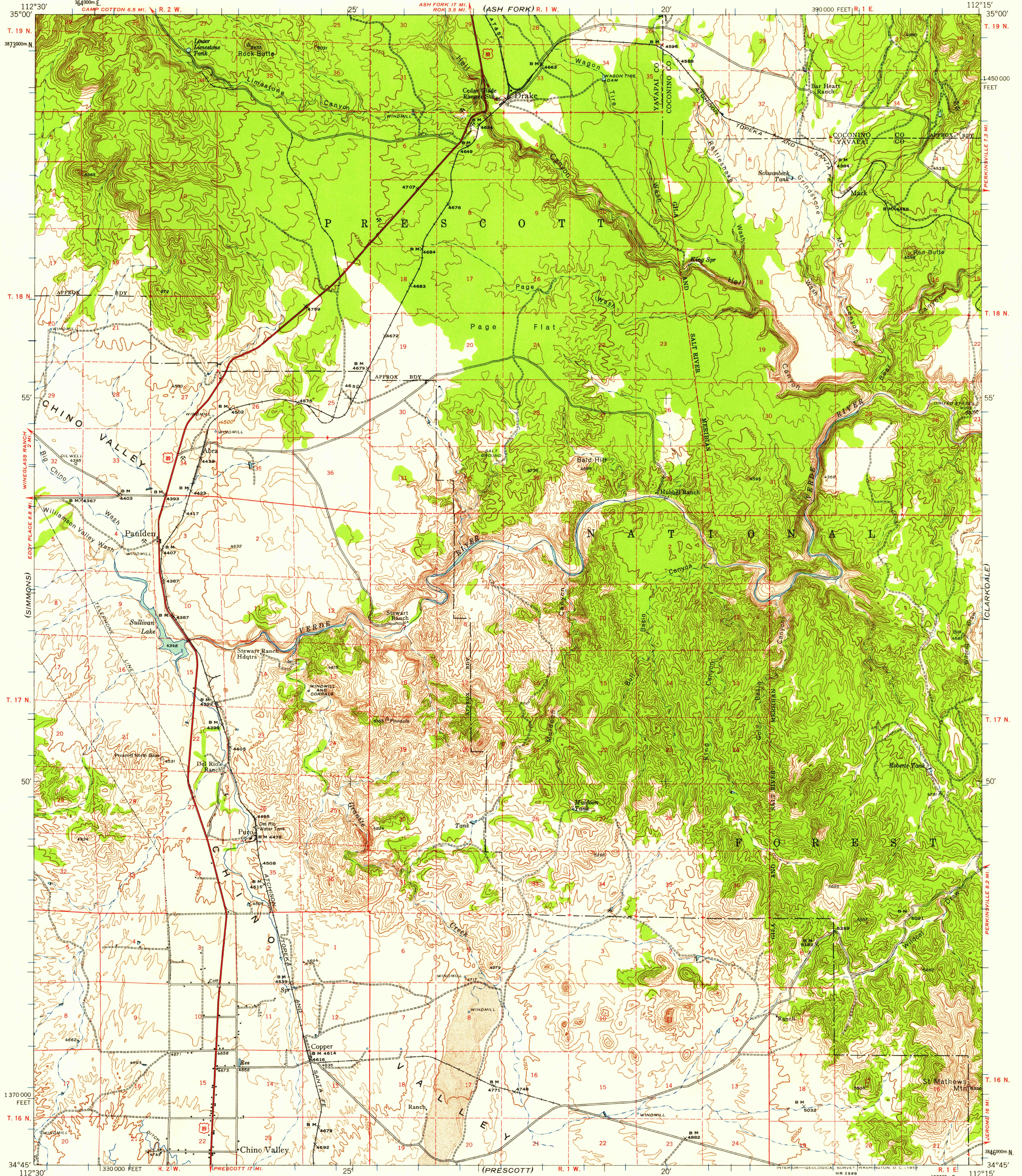


PICACHO BUTTE



(IRON SPRINGS)

Mapped by the U.S. Forest Service Edited and published by the Geological Survey Control by USFS, USC&GS and GS

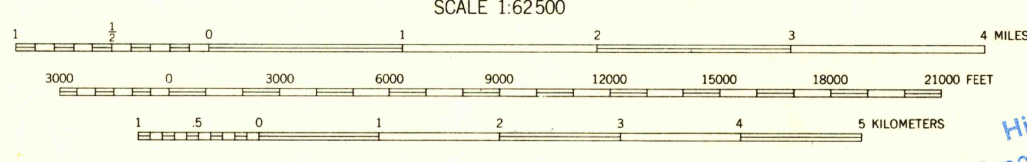
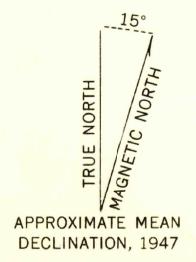
Topography from aerial photographs by KEK plotter Aerial photographs taken 1946. Field check 1947

Polyconic projection. 1927 North American datum 10,000-foot grid based on Arizona coordinate system, central zone

No distinction is made between dwellings, barns, commercial and industrial buildings.

Dashed land lines indicate approximate location

1000-meter Universal Transverse Mercator grid ticks, zone 12, shown in blue



CONTOUR INTERVAL 50 FEET DATUM IS MEAN SEA LEVEL

FOR SALE BY U. S. GEOLOGICAL SURVEY, DENVER 2, COLORADO OR WASHINGTON 25, D. C. A FOLDER DESCRIBING TOPOGRAPHIC MAPS AND SYMBOLS IS AVAILABLE ON REQUEST

USGS Historical File Topographic Division

ROAD CLASSIFICATION table with symbols for heavy-duty, medium-duty, loose-surface, U.S. Route, and State Route.

U.S.G.S. FILE COPY TOPOGRAPHIC DIVISION PAULDEN, ARIZ. N3445-W11215/15 1947

JUN 27 1956

1930