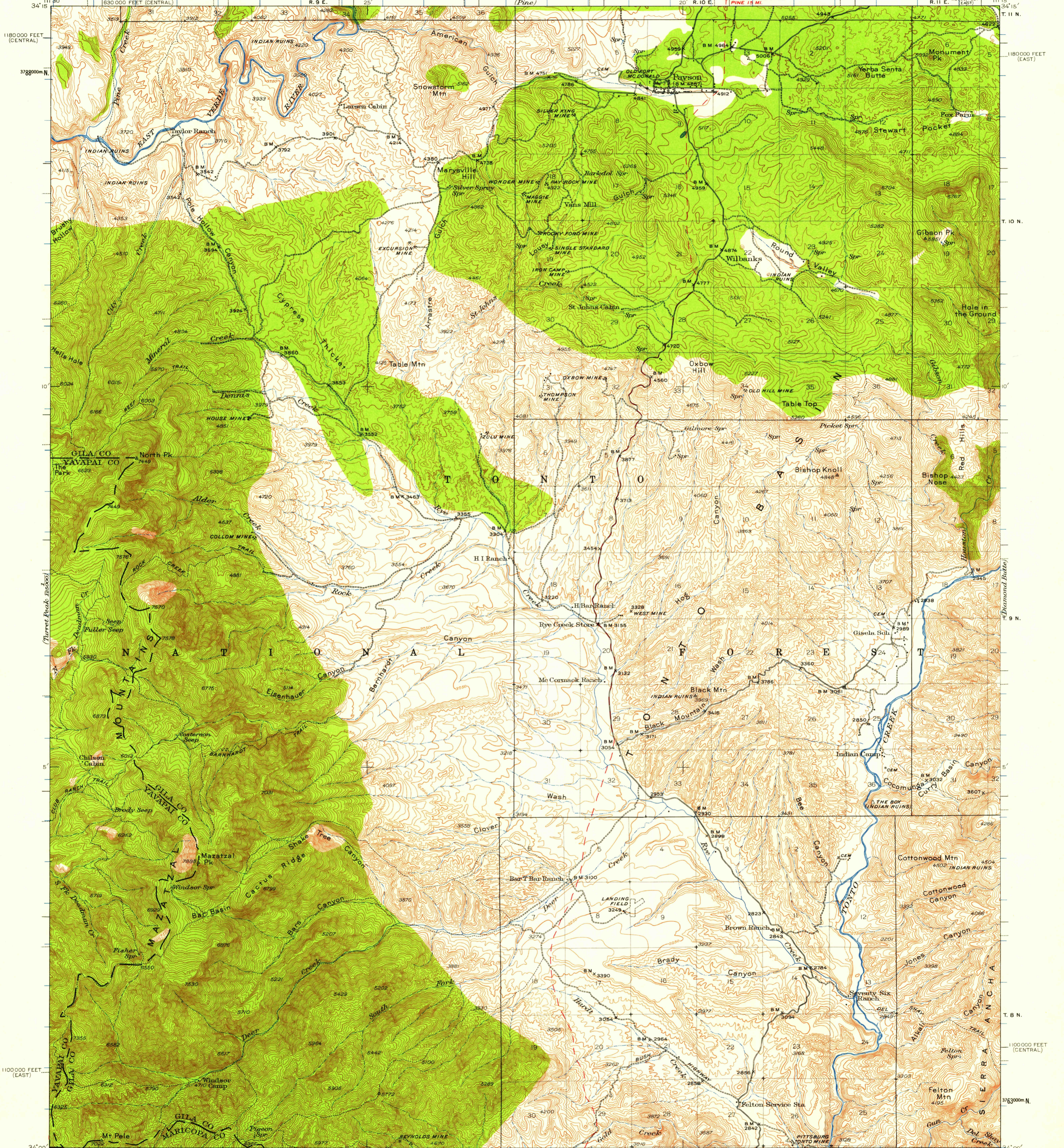
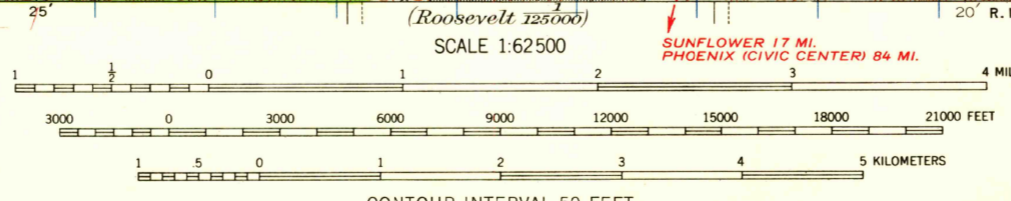
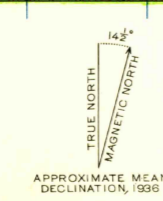


UNITED STATES
DEPARTMENT OF THE INTERIOR
GEOLOGICAL SURVEY

ARIZONA
PAYSON QUADRANGLE



Topography by W.R. Chenoweth, F.H. Purdy, J.G. Ransom, G.A. Fischer, N.I. Campbell, G.A. Green, F.G. Sommer, V.E. Wicks, W.E. Anderson, and D.V. Birdseye. Surveyed in 1935-1936.



USGS
Historical File
Topographic Division

Polygonic projection. 1927 North American datum 10,000-foot grids based on Arizona (Central) and Arizona (East) rectangular coordinate systems 1000-meter Universal Transverse Mercator grid ticks, zone 12, shown in blue.

ROAD CLASSIFICATION
Medium-duty ——— Light-duty ———
Unimproved dirt - - - - -

PAYSON, ARIZ.
N 3400-W 111115/15
1936
NOV - 5 1958

FOR SALE BY U.S. GEOLOGICAL SURVEY, DENVER 2, COLORADO OR WASHINGTON 25, D. C.
A FOLDER DESCRIBING TOPOGRAPHIC MAPS AND SYMBOLS IS AVAILABLE ON REQUEST

U.S.G.S. FILE COPY TOPOGRAPHIC DIVISION

2465