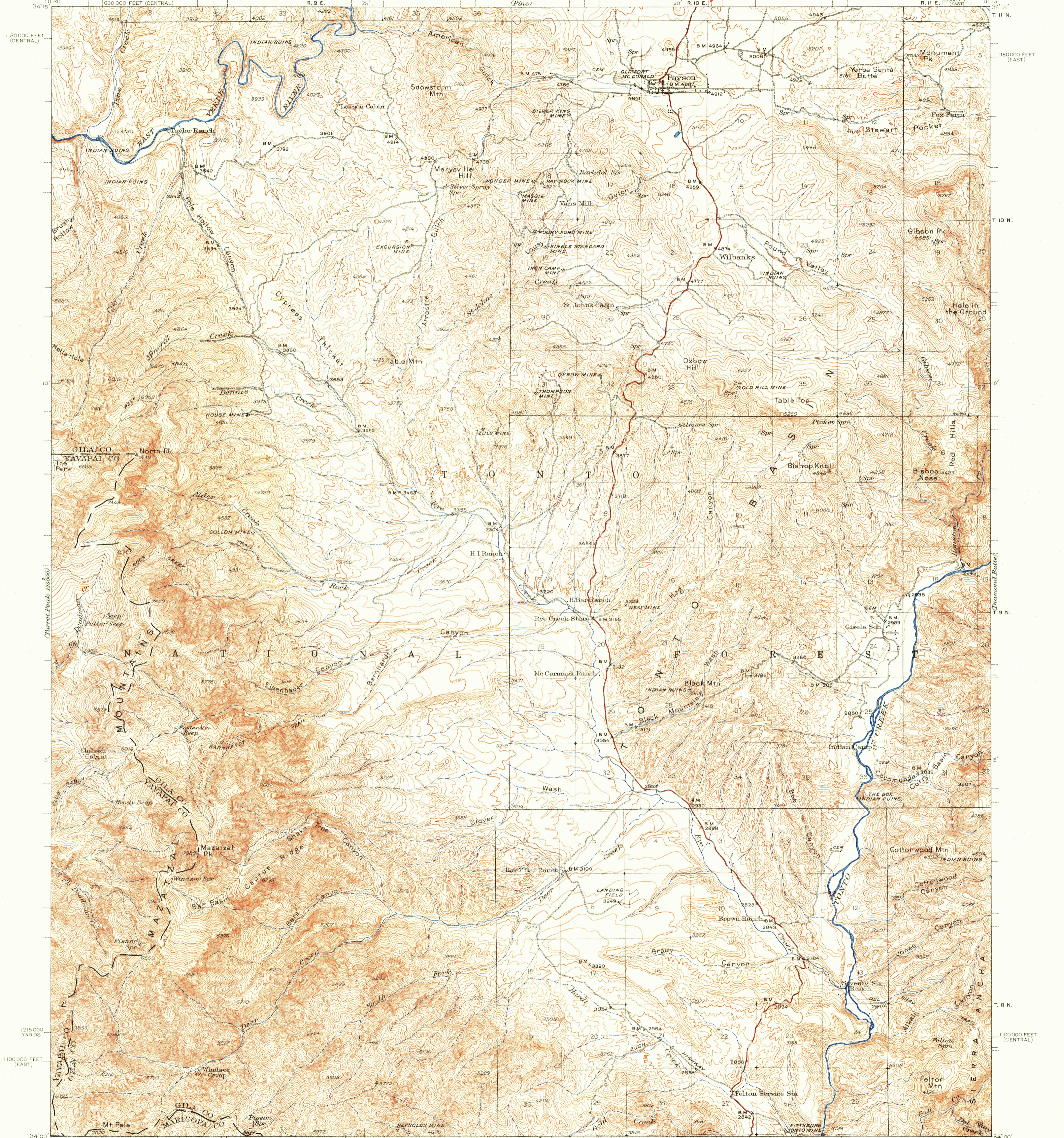


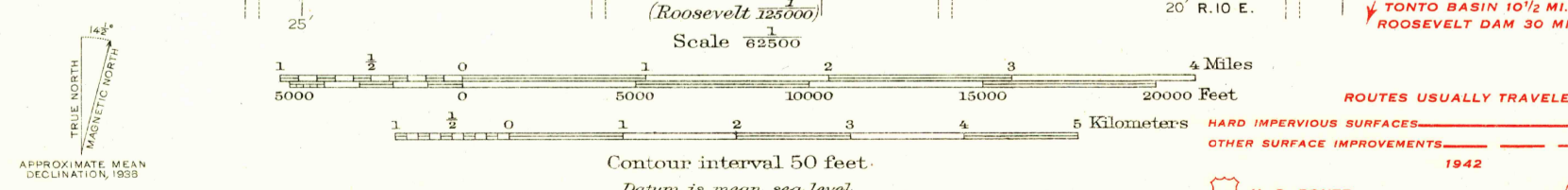
UNITED STATES
DEPARTMENT OF THE INTERIOR
GEOLOGICAL SURVEY

U.S.G.S.
FILE COPY
TOPOGRAPHIC DIVISION

ARIZONA
PAYSON QUADRANGLE
R. 11 E. T. 11 N.



Topography by WR Chenoweth, FH Purdy, JG Ransom,
GA Fischer, NI Campbell, CA Green, FG Sommer,
VE Wicks, WE Anderson, and DV Birdseye
Surveyed in 1935-1936



PROJECTIONS
POLYCONIC PROJECTION, 1927 NORTH AMERICAN DATUM
5000 YARD GRID BASED ON U.S. ZONE AMERICAN SYSTEM, F
10000 FOOT GRIDS BASED ON ARIZONA (CENTRAL) AND
ARIZONA (EAST) RECTANGULAR COORDINATE SYSTEMS

ROUTES USUALLY TRAVELED
HARD IMPERVIOUS SURFACES
OTHER SURFACE IMPROVEMENTS
1942

U.S. ROUTE
STATE ROUTE

PAYSON, ARIZ.
Edition of 1942

U.S.G.S. N3400-W1115/15
FILE COPY
TOPOGRAPHIC DIVISION

JUL 26 1955
1025