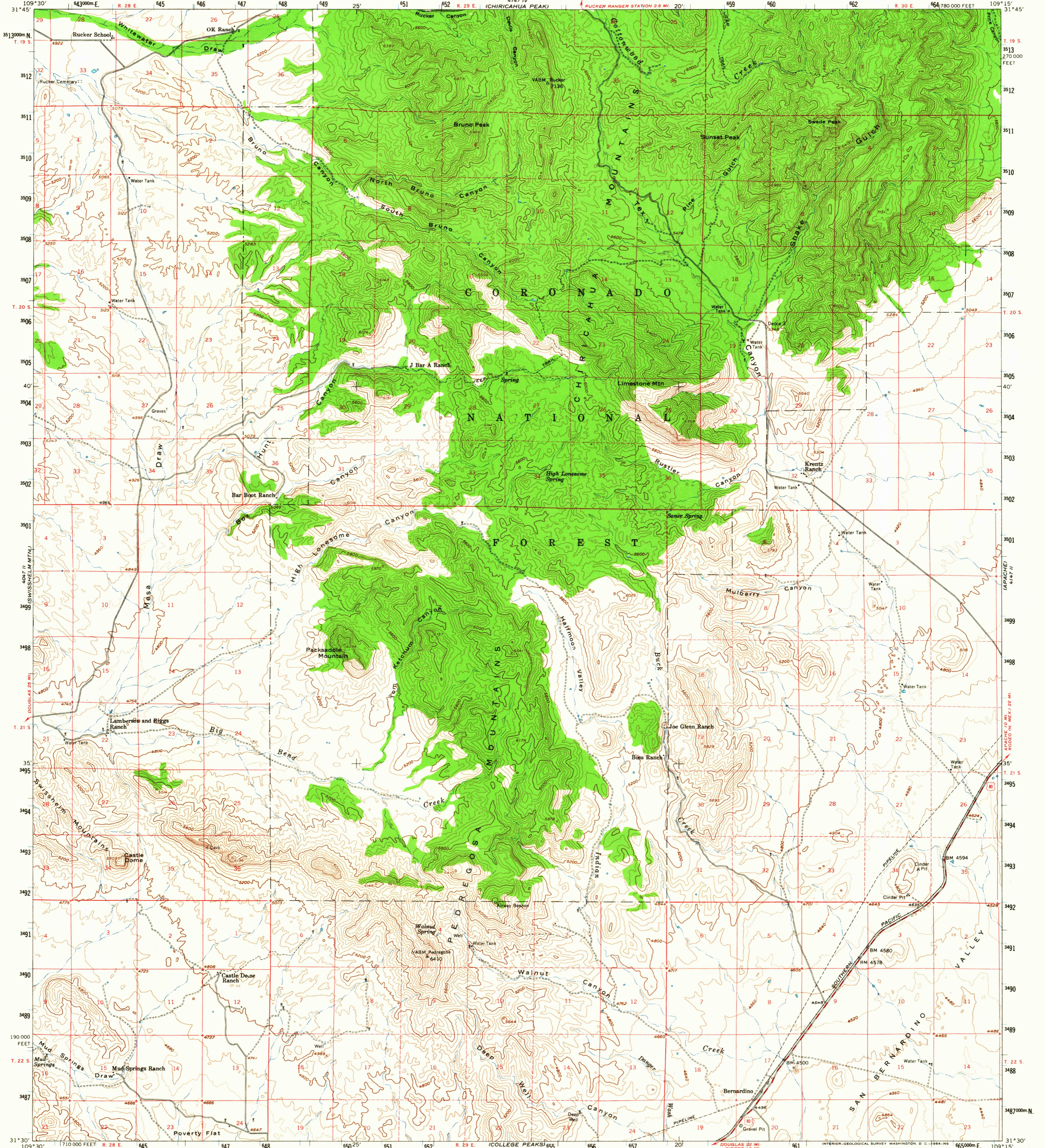
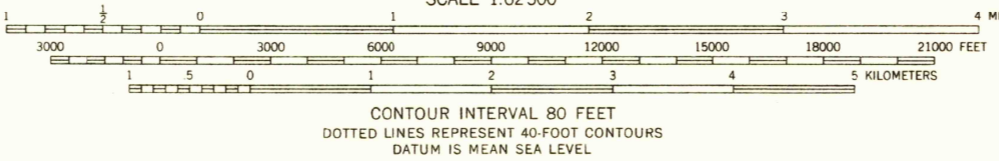
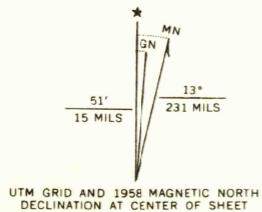


UNITED STATES  
DEPARTMENT OF THE INTERIOR  
GEOLOGICAL SURVEY

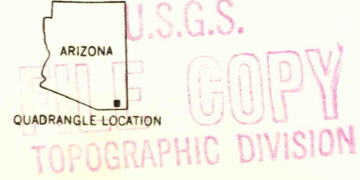
PEDREGOSA MOUNTAINS QUADRANGLE  
ARIZONA-COCHISE CO.  
15 MINUTE SERIES (TOPOGRAPHIC)



Mapped, edited, and published by the Geological Survey  
Control by USGS and USC&GS  
Topography from aerial photographs by ER-55 plotter  
Aerial photographs taken 1956. Field check 1958  
Polyconic projection. 1927 North American datum  
10,000-foot grid based on Arizona coordinate system, east zone  
1000-meter Universal Transverse Mercator grid ticks,  
zone 12, shown in blue  
Dashed land lines indicate approximate locations  
Unchecked elevations are shown in brown  
Land lines surveyed in T. 19 S.-R. 30 E.,  
T. 21 S.-R. 29 E., and parts of T. 19 S.-R. 29 E.



USGS  
Historical File  
Topographic Division



ROAD CLASSIFICATION  
Medium-duty — Light-duty  
Unimproved dirt — U.S. Route

THIS MAP COMPLIES WITH NATIONAL MAP ACCURACY STANDARDS  
FOR SALE BY U. S. GEOLOGICAL SURVEY, DENVER 25, COLORADO OR WASHINGTON 25, D. C.  
A FOLDER DESCRIBING TOPOGRAPHIC MAPS AND SYMBOLS IS AVAILABLE ON REQUEST

PEDREGOSA MOUNTAINS, ARIZ.  
N3130-W10915/15

1958  
MAY 5 1964  
AMS 4147 III-SERIES V798