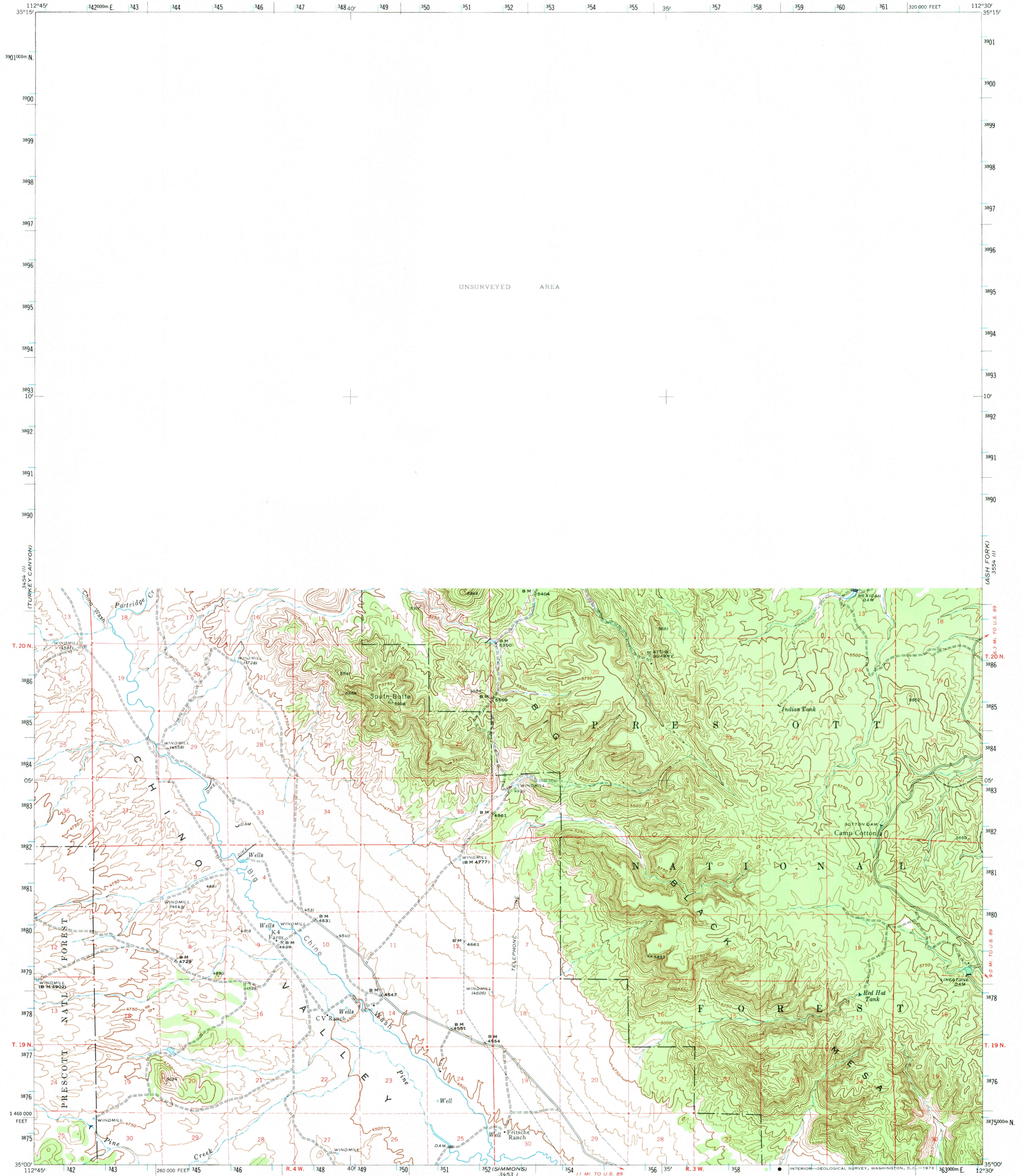
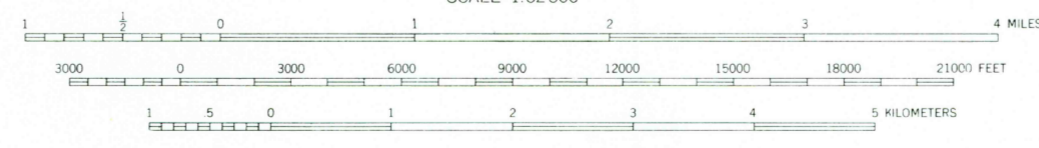
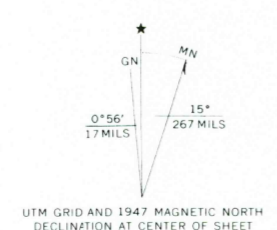


3554 IV  
(HEARST MTRN)



UNSURVEYED AREA

Mapped by the U.S. Forest Service  
Edited and published by the Geological Survey  
Control by U.S. Forest Service, USGS and USC&GS  
Topography from aerial photographs by KEK plotter  
Aerial photographs taken 1946. Field check 1947  
Polyconic projection. 1927 North American datum  
10,000-foot grid based on Arizona coordinate system,  
central zone  
No distinction is made between dwellings,  
barns, commercial, and industrial buildings  
Dashed land lines indicate approximate location  
1000-meter Universal Transverse Mercator grid ticks,  
zone 12, shown in blue



CONTOUR INTERVAL 50 FEET  
DATUM IS MEAN SEA LEVEL

THIS MAP COMPLIES WITH NATIONAL MAP ACCURACY STANDARDS  
FOR SALE BY U.S. GEOLOGICAL SURVEY, DENVER, COLORADO 80225 OR WASHINGTON, D. C. 20242  
A FOLDER DESCRIBING TOPOGRAPHIC MAPS AND SYMBOLS IS AVAILABLE ON REQUEST

ROAD CLASSIFICATION

HARD-SURFACE ALL WEATHER ROADS	DRY WEATHER ROADS
Heavy-duty <u>4 LANE 16 LANE</u>	Improved dirt <u>.....</u>
Medium-duty <u>4 LANE 16 LANE</u>	Unimproved dirt <u>.....</u>
Loose-surface, graded, or narrow hard-surface <u>- - - - -</u>	
U. S. Route <u>○</u>	State Route <u>○</u>

PICACHO BUTTE, ARIZ.  
N3500-W11230/15  
1947  
AMS 3454 II - SERIES V798

USGS  
Historical File  
Topographic Division

NOV 21 1973

1635