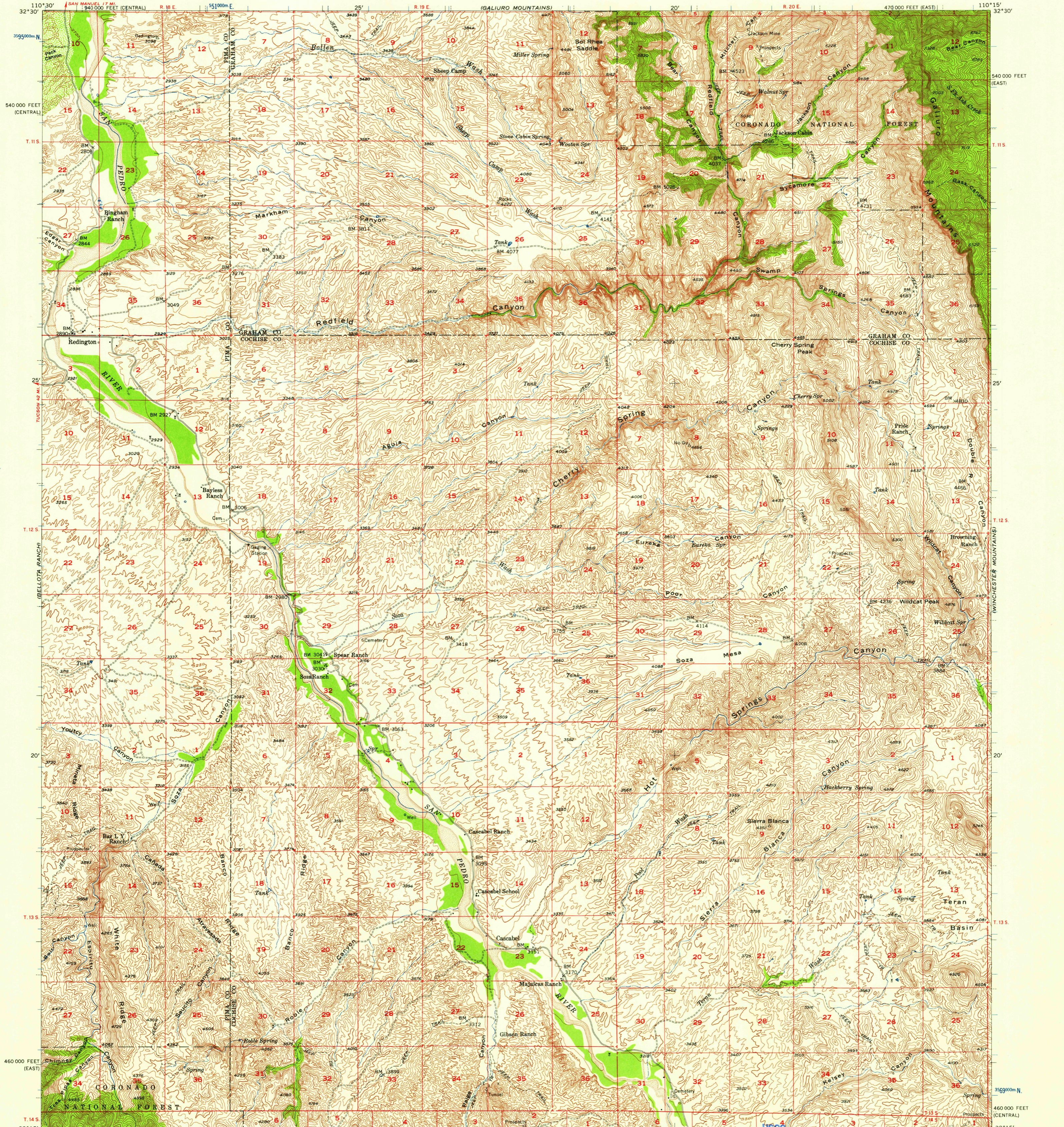
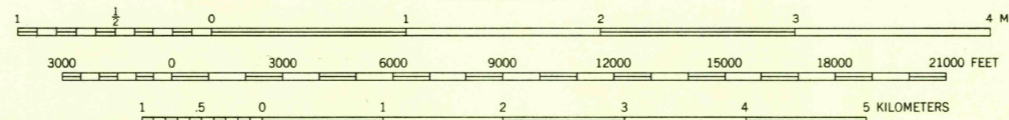


UNITED STATES
DEPARTMENT OF THE INTERIOR
GEOLOGICAL SURVEY

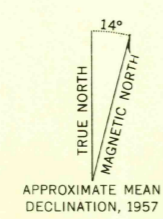
REDINGTON QUADRANGLE
ARIZONA
15 MINUTE SERIES (TOPOGRAPHIC)



Mapped, edited, and published by the Geological Survey
Control by USGS and USC&GS
Topography by planetable surveys 1942-43
Culture revision and field check 1957
Polyconic projection. 1927 North American datum
10,000-foot grid based on Arizona coordinate system,
east and central zones
1000-meter Universal Transverse Mercator grid ticks,
zone 12, shown in blue



SCALE 1:62500
CONTOUR INTERVAL 50 FEET
DATUM IS MEAN SEA LEVEL



USGS
Historical File
Topographic Division



U.S.G.S.
FILE COPY
TOPOGRAPHIC

REDINGTON, ARIZ. AUG 20 1958
N3215-W11015/15

1957

FOR SALE BY U. S. GEOLOGICAL SURVEY, DENVER 2, COLORADO OR WASHINGTON 25, D. C.
A FOLDER DESCRIBING TOPOGRAPHIC MAPS AND SYMBOLS IS AVAILABLE ON REQUEST

1960