

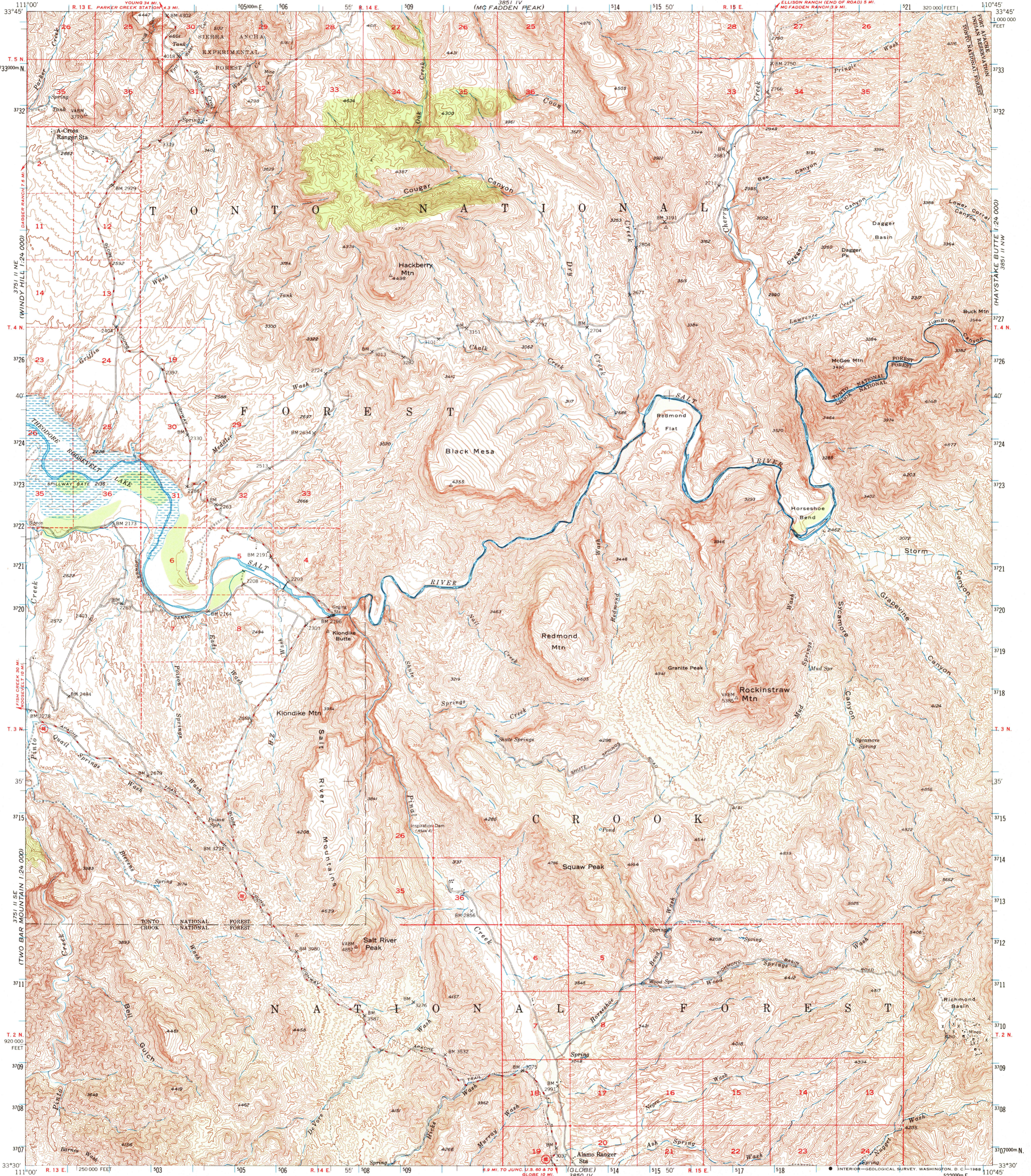
3751 SE  
LAUREL MTN.

UNITED STATES  
DEPARTMENT OF THE INTERIOR  
GEOLOGICAL SURVEY

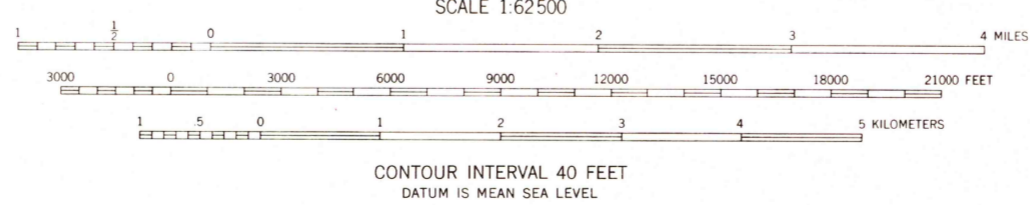
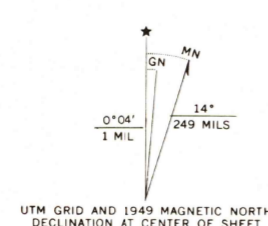
UNITED STATES  
DEPARTMENT OF THE ARMY  
CORPS OF ENGINEERS  
(MC FADDEN PEAK)

ROCKINSTRAW MTN. QUADRANGLE  
ARIZONA-GILA CO.  
15 MINUTE SERIES (TOPOGRAPHIC)

3851 I  
BLUE HOUSE MTN.



Mapped, edited, and published by the Geological Survey  
Control by USGS, USC&GS, and USFS  
Topography from aerial photographs by multiplex methods  
Aerial photographs taken 1947. Field check 1949  
Polyconic projection. 1927 North American datum  
10,000-foot grid based on Arizona coordinate system,  
east zone  
Dashed land lines indicate approximate location  
Unchecked elevations are shown in brown  
1000-meter Universal Transverse Mercator grid ticks,  
zone 12, shown in blue



ROAD CLASSIFICATION

HARD SURFACE ALL WEATHER ROADS	DRY WEATHER ROADS
Heavy-duty — 4 LANE LANE	Improved dirt —
Medium-duty — 4 LANE LANE	Unimproved dirt —
Loose surface, graded, or narrow hard-surface —	
U.S. Route	State Route

ROCKINSTRAW MTN., ARIZ.  
N3330-W11045/15

1949

AMS 3851 III—SERIES V798

THIS MAP COMPLIES WITH NATIONAL MAP ACCURACY STANDARDS  
FOR SALE BY U. S. GEOLOGICAL SURVEY, DENVER, COLORADO 80225 OR WASHINGTON, D. C. 20242  
A FOLDER DESCRIBING TOPOGRAPHIC MAPS AND SYMBOLS IS AVAILABLE ON REQUEST

(SUPERIOR)  
3750 I

3851 I  
WASH 1:24,000