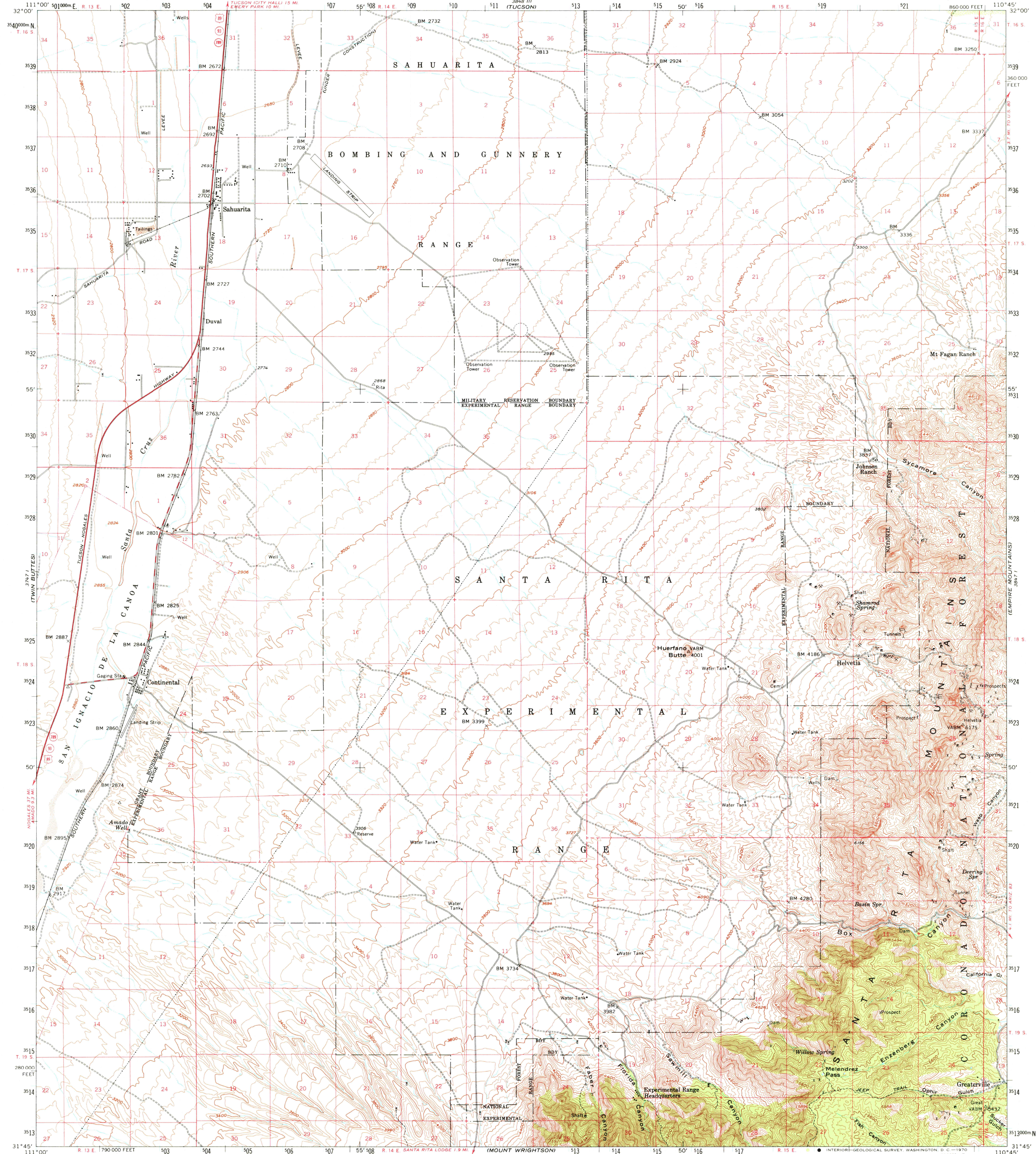
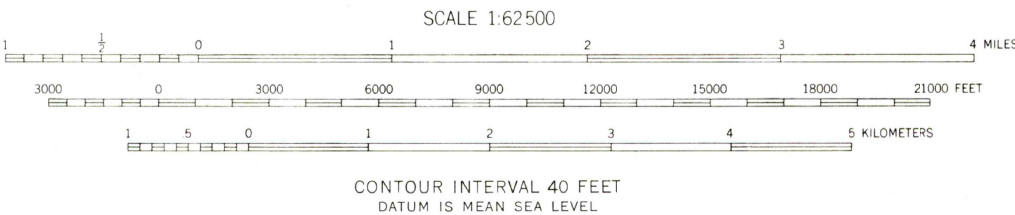
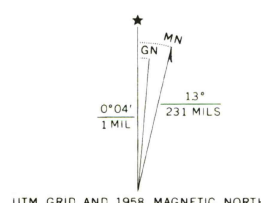


UNITED STATES
DEPARTMENT OF THE INTERIOR
GEOLOGICAL SURVEY

SAHUARITA QUADRANGLE
ARIZONA-PIMA CO.
15 MINUTE SERIES (TOPOGRAPHIC)



Maped, edited, and published by the Geological Survey
Control by USGS and USCGS
Topography from aerial photographs by ER-55 plotter
Aerial photographs taken 1955-1956. Field check 1958
Polyconic projection. 1927 North American datum
10,000-foot grid based on Arizona coordinate system, central zone
1000-meter Universal Transverse Mercator grid ticks,
zone 12, shown in blue
Dashed land lines indicate approximate locations
Unchecked elevations are shown in brown



ROAD CLASSIFICATION
Heavy-duty ——— Light-duty ———
Medium-duty ——— Unimproved dirt ———
U.S. Route ——— State Route ———

SAHUARITA, ARIZ.
N3145-W11045/15

1958
AMS 3847 IV-SERIES V798

AUG 0 1 1977

USGS
Historical File
Topographic Division

4300