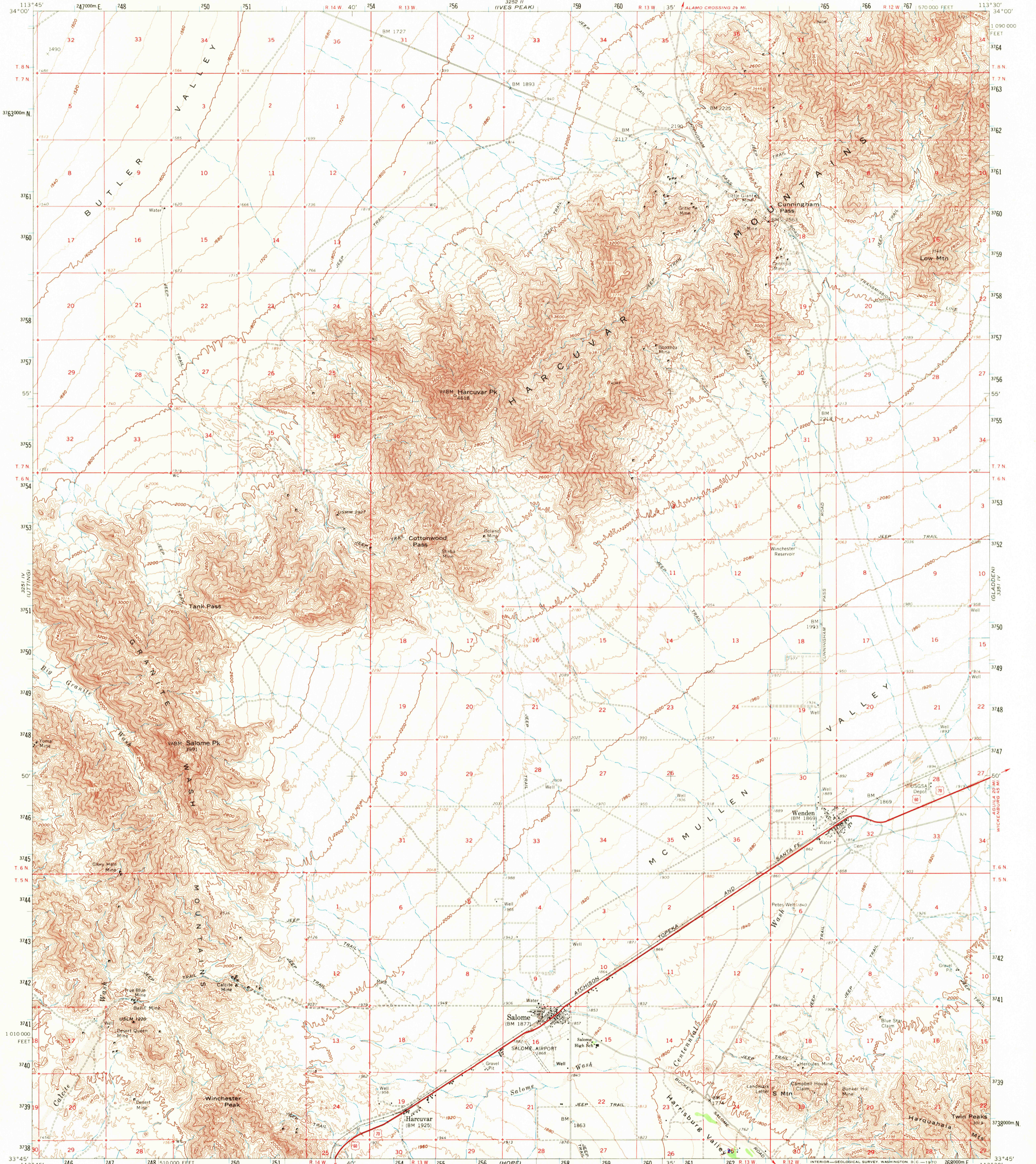


3292 U.S. (SWANSEA)

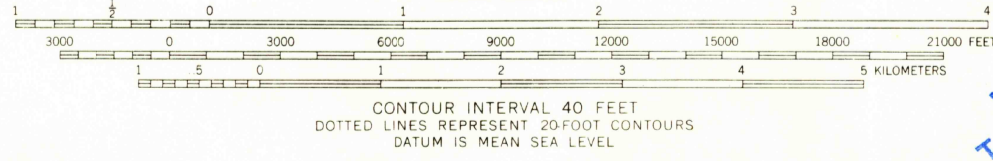
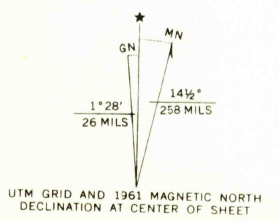
UNITED STATES DEPARTMENT OF THE INTERIOR GEOLOGICAL SURVEY

SALOME QUADRANGLE ARIZONA-YUMA CO. 15 MINUTE SERIES (TOPOGRAPHIC)

3292 U.S. (SWANSEA) 1:250,000



Mapped, edited, and published by the Geological Survey Control by USGS and USC&GS Topography by photogrammetric methods from aerial photographs taken 1951 and 1960. Field checked 1961 Polyconic projection. 1927 North American datum 10,000-foot grid based on Arizona coordinate system, west zone 1000-meter Universal Transverse Mercator grid ticks, zone 12, shown in blue Where omitted, land lines have not been established



USGS Historical File Topographic Division

ROAD CLASSIFICATION Heavy-duty Light-duty Unimproved dirt U.S. Route JUL 2 1970



U.S.G.S. SALOME, ARIZ. N3345-W11330/15 1961 FILE COPY TOPOGRAPHIC DIVISION 3-120

THIS MAP COMPLIES WITH NATIONAL MAP ACCURACY STANDARDS FOR SALE BY U.S. GEOLOGICAL SURVEY, DENVER, COLORADO 80225 OR WASHINGTON, D. C. 20242 A FOLDER DESCRIBING TOPOGRAPHIC MAPS AND SYMBOLS IS AVAILABLE ON REQUEST