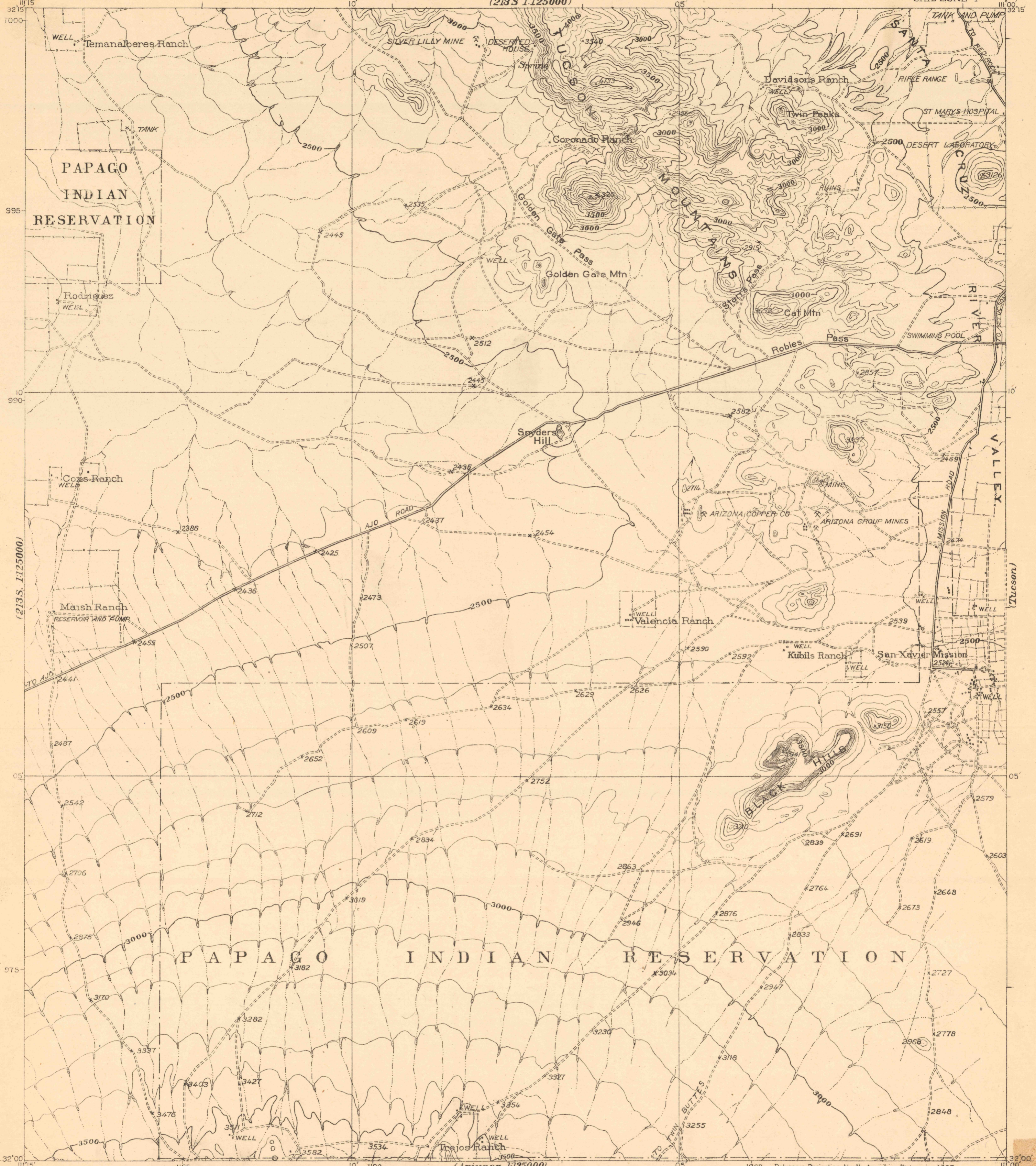


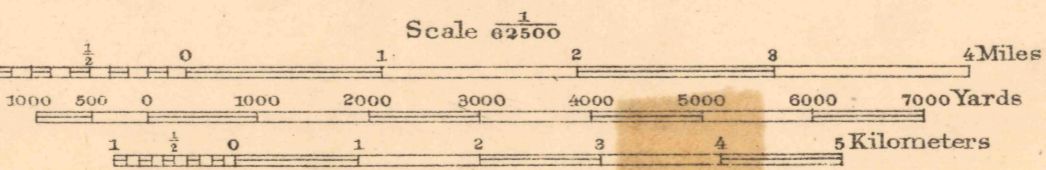
CONTROLLED RECONNAISSANCE
213-S-IV-E/2
(213 S 1:125000)

ARIZONA
SAN XAVIER QUADRANGLE
GRID ZONE "F"

CORPS OF ENGINEERS, U. S. ARMY
TACTICAL MAP



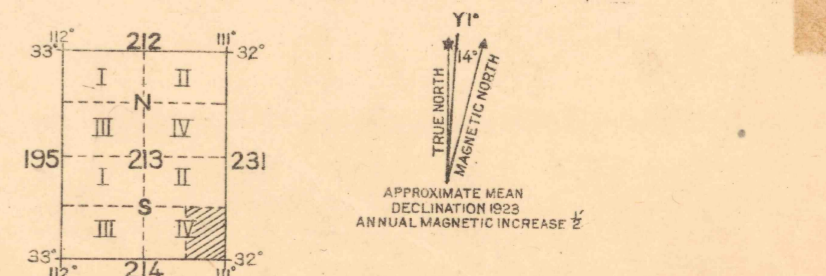
Edgar Jadwin, Col., Corps of Engineers, Engineer, Eighth Corps Area.
W.N. Vance, Topographic Assistant, Chief of Map Section.
P.E. Berniel, Capt., J.C. Wade and Jos. J. Twitty, 1st Lt., Co. F.E., Officers in Charge.
Topography by J.C. Wade, 1st Lt., C.E., D.W. Hale, 1st Lt., 1st Cav., L.H. Barnes, 1st Lt., 82nd FA,
E.S. West, Capt., 1st Cav.; Jos. J. Twitty, 1st Lt., C.E.; C.A. Bruner, and W.J. Leonard, Sgts.,
W.J. Olszowy and E.B. Heaston, Corps, Co. E, 2nd Engrs. and M. Jackson, W.O.
Control by U.S. Coast and Geodetic Survey; J.C. Wade, 1st Lt., C.E. and Corp.
S. Williams, Co. K, 24th Inf.
Surveyed 1922-1923.
Office Drafting by W.R. Wilson, Sgt., Enl. Det. Office Engr, 8th. CA.
Under supervision of A. Drouet, Surveyor, Chief Draftsman.



Contour Interval 100 feet.
Datum is mean sea level.

FIVE THOUSAND YARD GRID COMPUTED FROM "GRID SYSTEM FOR PROGRESSIVE MAPS
IN THE U.S. "ZONE" F U.S.C. & G.S. SPECIAL PUBLICATION NO. 59.
(THE LAST THREE DIGITS OF THE GRID NUMBERS ARE OMITTED).

NOTE: USERS OF THIS MAP ARE REQUESTED TO MARK HEREON CORRECTIONS AND ADDITIONS WHICH COME
TO THEIR ATTENTION AND MAIL DIRECT TO "ENGINEER EIGHTH CORPS AREA, FT. SAM HOUSTON, TEX."



NOTE: Papago Indian Reservation adjusted
from Tucson and Saniago Peak quadrangles
as no section corners were located on the
San Xavier quadrangle.

EIGHTH CORPS AREA ENGINEER REPRODUCTION PLANT.
1925.

FILE COPY
MAP INFORMATION OFFICE

SAN XAVIER, ARIZ