

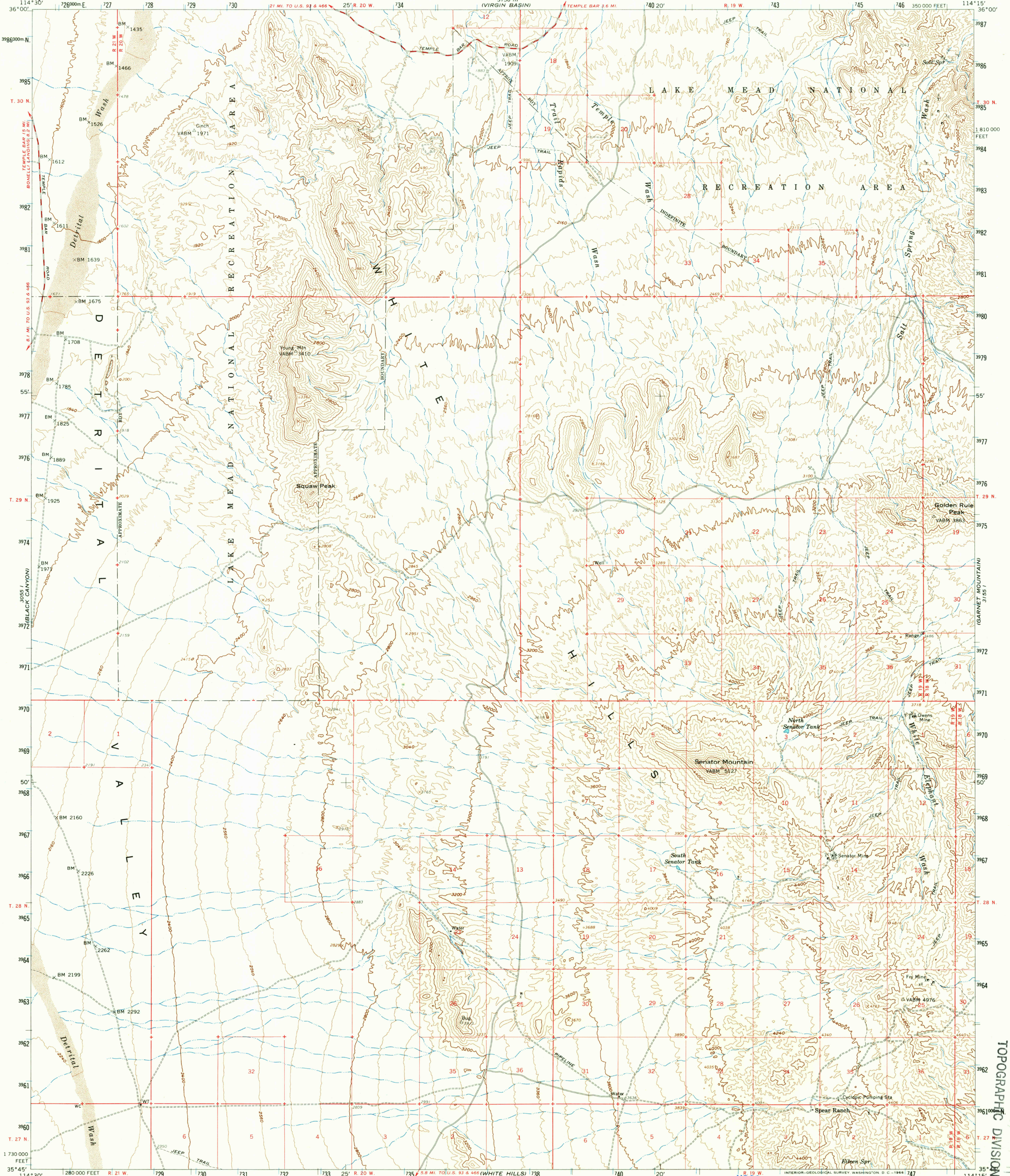
HOOPER DAM

UNITED STATES DEPARTMENT OF THE INTERIOR GEOLOGICAL SURVEY

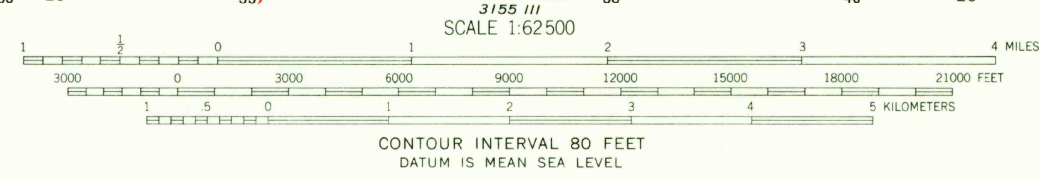
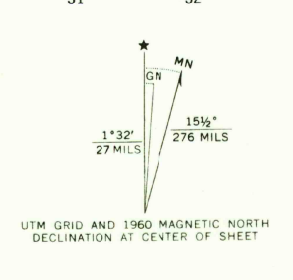
UNITED STATES DEPARTMENT OF THE ARMY CORPS OF ENGINEERS

SENATOR MOUNTAIN QUADRANGLE ARIZONA—MOHAVE CO. 15 MINUTE SERIES (TOPOGRAPHIC)

ICEBERG CANYON



Maped, edited, and published by the Geological Survey Control by USGS and USC&GS Topography from aerial photographs by photogrammetric methods Aerial photographs taken 1958. Field check 1960 Polyconic projection. 1927 North American datum 10,000-foot grid based on Arizona coordinate system, west zone 1000-meter Universal Transverse Mercator grid ticks, zone 11, shown in blue Land lines unsurveyed in parts of T 27 N.—R. 21 W., T. 28 N.—R. 20 and 21 W. and T. 29 and 30 N.—R. 18, 19, 20 and 21 W.



USGS Historical File Topographic Division QUADRANGLE LOCATION ARIZONA

ROAD CLASSIFICATION Medium-duty Light-duty Unimproved dirt

THIS MAP COMPLIES WITH NATIONAL MAP ACCURACY STANDARDS FOR SALE BY U. S. GEOLOGICAL SURVEY, DENVER, COLORADO 80225 OR WASHINGTON, D. C. 20242 A FOLDER DESCRIBING TOPOGRAPHIC MAPS AND SYMBOLS IS AVAILABLE ON REQUEST

SENATOR MOUNTAIN, ARIZ. N3545—W11415/15

1960 AMS 3155 IV—SERIES V798

U.S.G.S. TOPOGRAPHIC DIVISION

3095

APR 22 1966