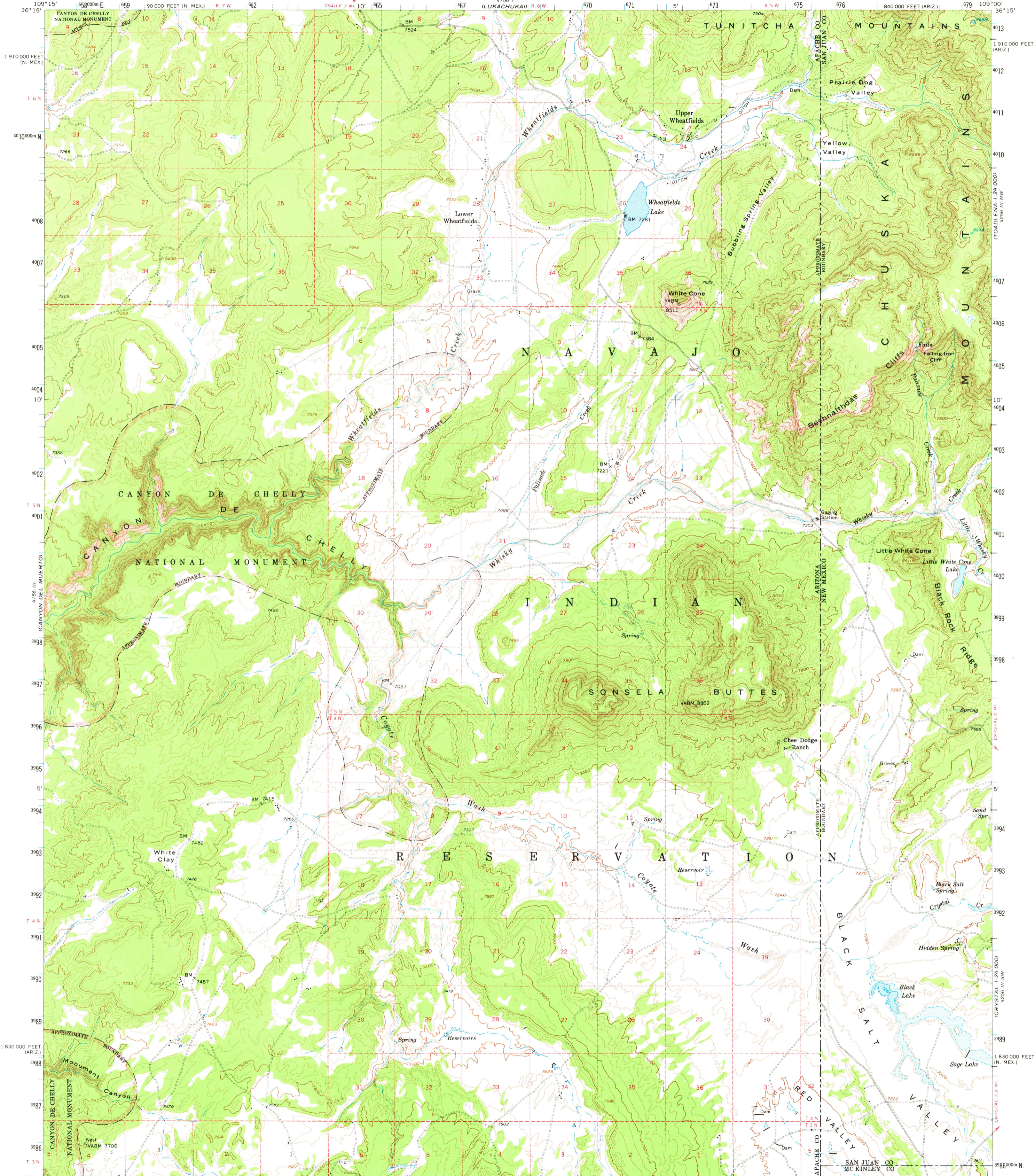
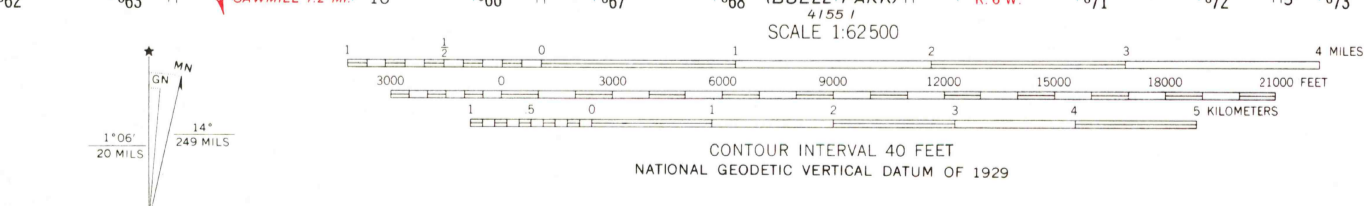


UNITED STATES
DEPARTMENT OF THE INTERIOR
GEOLOGICAL SURVEY

SONSELA BUTTES QUADRANGLE
ARIZONA-NEW MEXICO
15 MINUTE SERIES (TOPOGRAPHIC)



Mapped, edited, and published by the Geological Survey
Control by USGS and USCGS
Topography from aerial photographs by multiplex methods
Aerial photographs taken 1953. Advance field check 1955
Polyconic projection. 1927 North American datum
10,000-foot grids based on Arizona coordinate system,
east zone, and New Mexico coordinate system, west zone
1000-meter Universal Transverse Mercator grid ticks,
zone 12, shown in blue
To place on the predicted North American Datum 1983
move the projection lines 1 meter north and
59 meters east
Dashed land lines indicate approximate locations
Unchecked elevations are shown in brown
There may be private inholdings within the boundaries of
the National or State reservations shown on this map



ROAD CLASSIFICATION
Light duty ——— Unimproved dirt - - - - -

SONSELA BUTTES, ARIZ. - N. MEX.
N3600-W10900/15

1955
DMA 4156 II-SERIES V798

APR 27 1982

2500