

(ELEM)

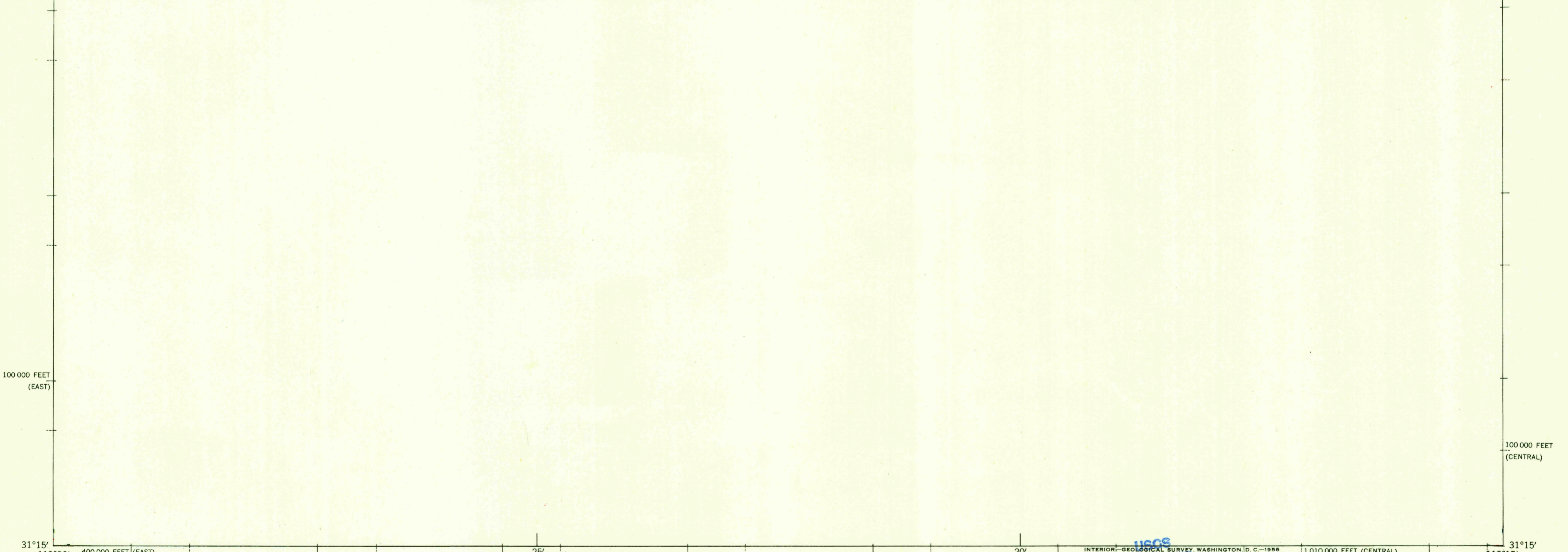
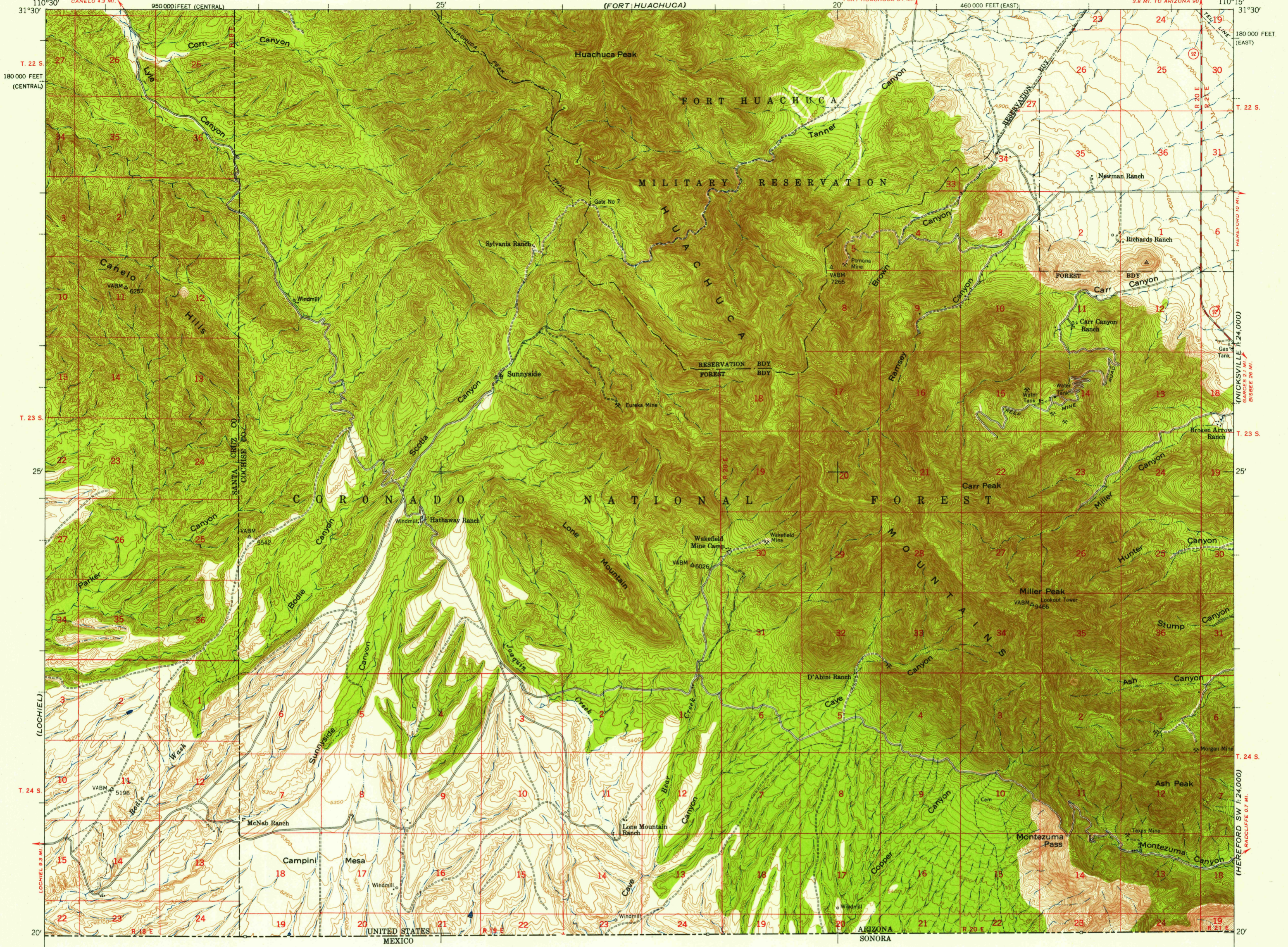
UNITED STATES  
DEPARTMENT OF THE INTERIOR  
GEOLOGICAL SURVEY

UNITED STATES  
DEPARTMENT OF THE ARMY  
CORPS OF ENGINEERS  
(FORT HUACHUCA)

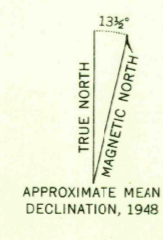
U.S.G.S.  
FILE COPY  
TOPOGRAPHIC DIVISION

SUNNYSIDE QUADRANGLE  
ARIZONA  
15 MINUTE SERIES (TOPOGRAPHIC)  
3.8 MI. TO ARIZONA SW

(LEWIS SPRINGS)  
1:24,000



Mapped by the Army Map Service  
 Published for civil use by the Geological Survey  
 Control by USGS, USC&GS, and USCE  
 Topography from aerial photographs by photogrammetric methods  
 Aerial photographs taken 1946. Field check 1948  
 Polyconic projection. 1927 North American datum  
 10,000-foot grid based on Arizona coordinate system,  
 east and central zones  
 No distinction is made between barns, dwellings,  
 commercial and industrial buildings  
 Unchecked elevations are shown in brown



THIS MAP COMPLIES WITH NATIONAL MAP ACCURACY STANDARDS  
 FOR SALE BY U. S. GEOLOGICAL SURVEY, FEDERAL CENTER, DENVER, COLORADO OR WASHINGTON 25, D. C.  
 A FOLDER DESCRIBING TOPOGRAPHIC MAPS AND SYMBOLS IS AVAILABLE ON REQUEST

U.S.G.S.  
 Historical  
 Topographic Division



ROAD CLASSIFICATION

Heavy-duty	4 LANE 6 LANE	Light-duty	2 LANE 4 LANE
Medium-duty	4 LANE 6 LANE	Unimproved dirt	-----

U. S. Route (circle with number)  
 State Route (circle with number)

U.S.G.S.  
 FILE COPY  
 TOPOGRAPHIC DIVISION

U.S.G.S.  
 SUNNYSIDE, ARIZ.  
 N3115-W11015/15  
 1948

MAR 20 1956

2600