

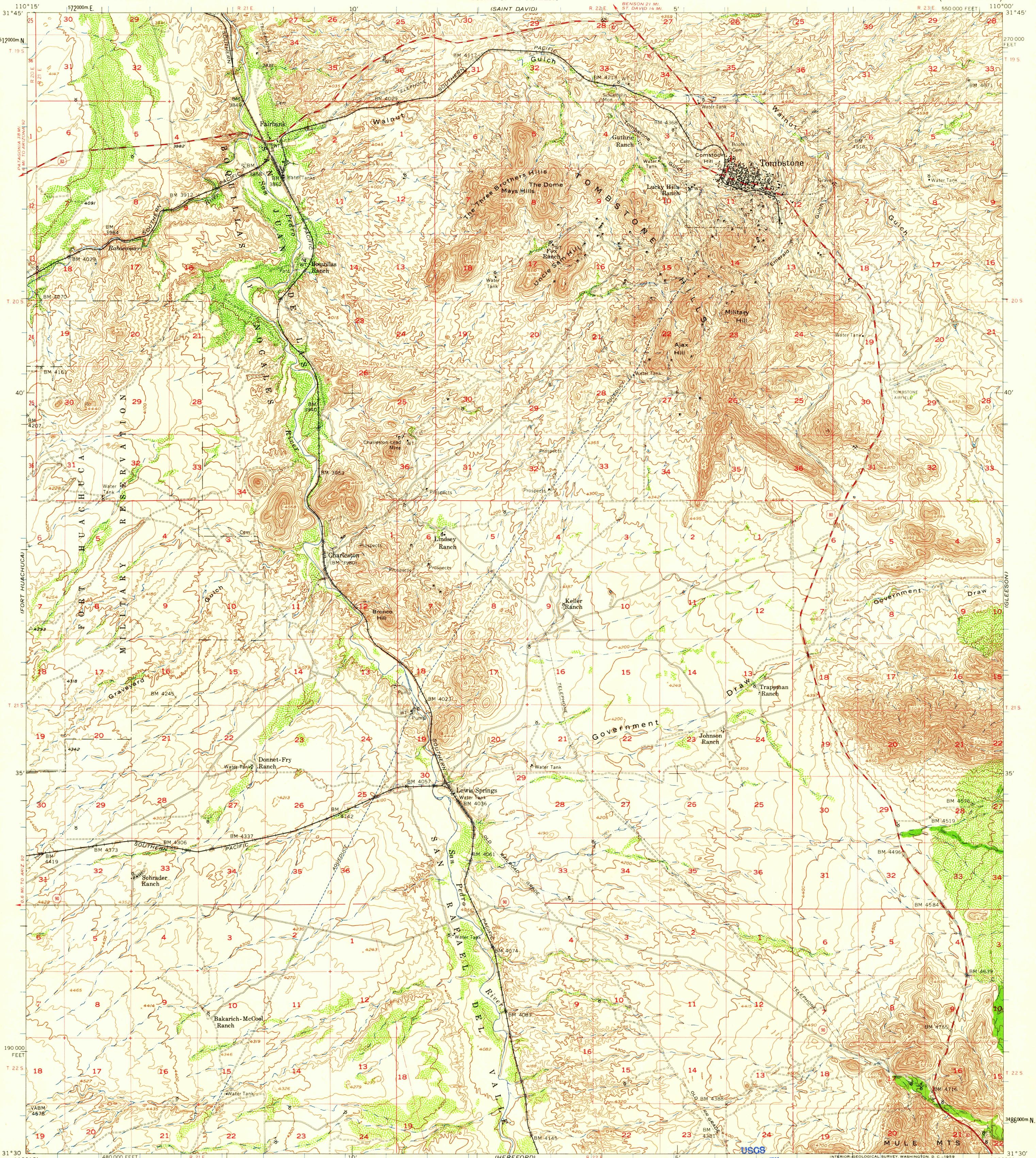
(BENSON)

UNITED STATES
DEPARTMENT OF THE INTERIOR
GEOLOGICAL SURVEY

UNITED STATES
DEPARTMENT OF THE ARMY
CORPS OF ENGINEERS

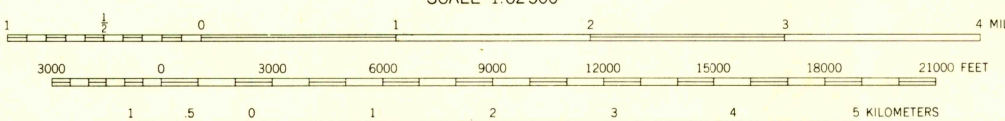
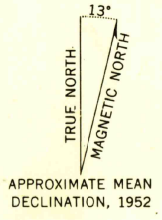
TOMBSTONE QUADRANGLE
ARIZONA-COCHISE CO.
15 MINUTE SERIES (TOPOGRAPHIC)

(PEARCE)



(SUNNYSIDE)

Mapped by the Army Map Service
Published for civil use by the Geological Survey
Control by USGS, USC&GS, and USCE
Compiled in 1956 from 1:25,000-scale maps of Tombstone,
Fairbank, Lewis Springs, and Tombstone SE 7.5 minute
quadrangles, surveyed 1952
Topography from aerial photographs by photogrammetric methods
Aerial photographs taken 1951. Field check 1952
Polyconic projection. 1927 North American datum
10,000-foot grid based on Arizona coordinate system, east zone
1000-meter Universal Transverse Mercator grid ticks,
zone 12, shown in blue
Unchecked elevations are shown in brown



SCALE 1:62,500
CONTOUR INTERVAL 25 FEET
DATUM IS MEAN SEA LEVEL

USGS
Historical File
Topographic Division

INTERIOR GEOLOGICAL SURVEY WASHINGTON D. C. 1959
M R-0624 R 23 E BISBEE 7.2 MI DOUGLAS 32 MI



ROAD CLASSIFICATION
Heavy-duty ——— Light duty ———
Medium-duty ——— Unimproved dirt ———
U. S. Route ——— State Route ———

U.S.G.S.
FILE COPY
TOPOGRAPHIC DIVISION

TOMBSTONE, ARIZ.
N3130—W11000/15

THIS MAP COMPLIES WITH NATIONAL MAP ACCURACY STANDARDS
FOR SALE BY U. S. GEOLOGICAL SURVEY, DENVER 25, COLORADO OR WASHINGTON 25, D. C.
A FOLDER DESCRIBING TOPOGRAPHIC MAPS AND SYMBOLS IS AVAILABLE ON REQUEST

NOV 20 1959
2510