

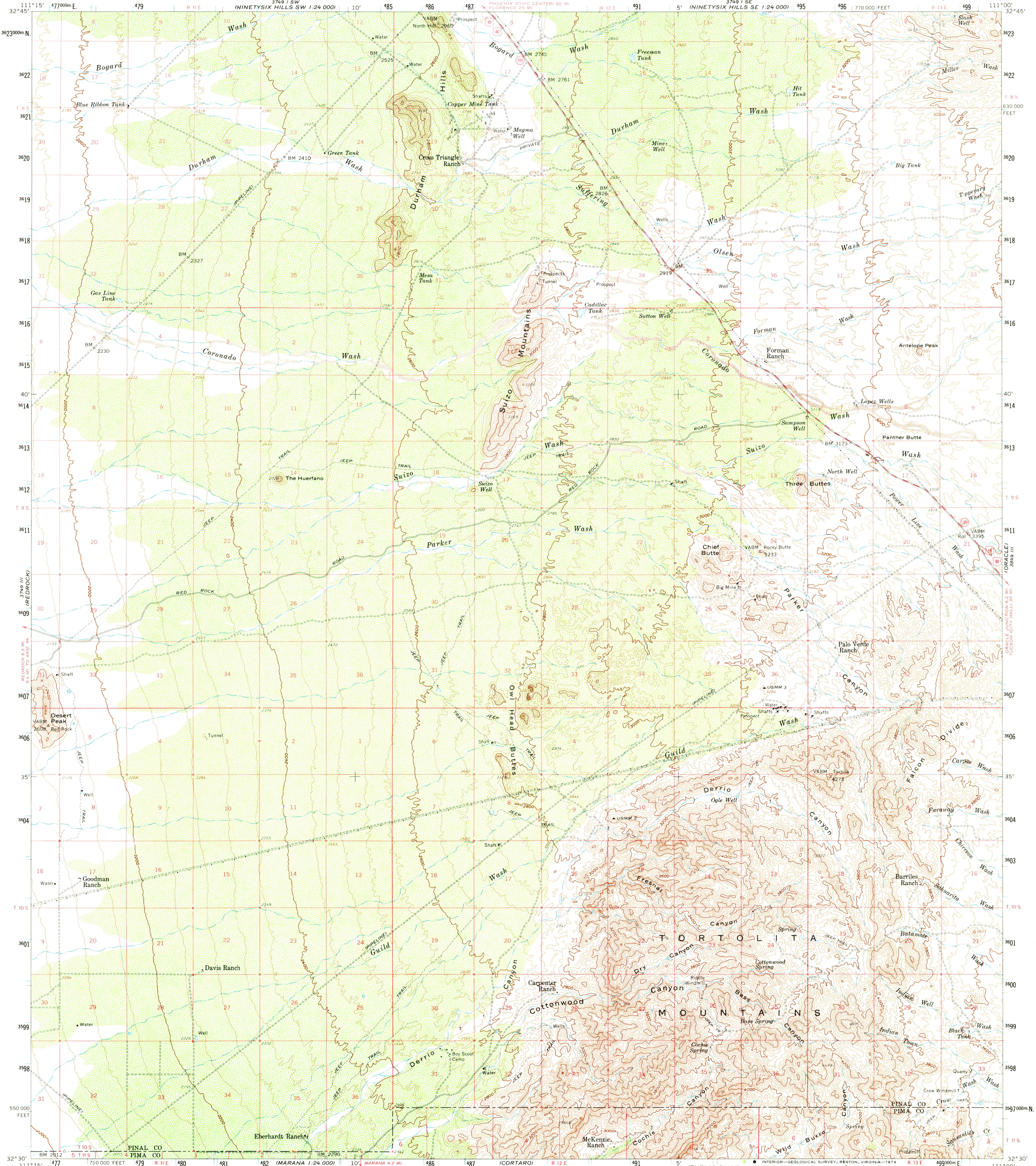
3749 I SE
PINAL CO 1:24,000

UNITED STATES
DEPARTMENT OF THE INTERIOR
GEOLOGICAL SURVEY

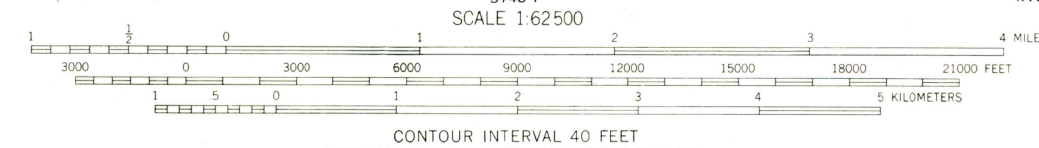
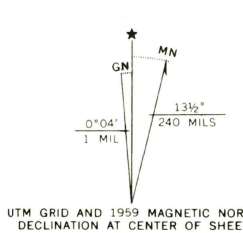
UNITED STATES
DEPARTMENT OF THE ARMY
CORPS OF ENGINEERS

TORTOLITA MTS. QUADRANGLE
ARIZONA
15 MINUTE SERIES (TOPOGRAPHIC)

3749 IV
PINAL CO 1:24,000



Mapped, edited, and published by the Geological Survey
Control by USGS and USC&GS
Topography from aerial photographs by photogrammetric methods
Aerial photographs taken 1958. Advance field check 1959
Polyconic projection. 1927 North American datum
10,000-foot grid based on Arizona coordinate system, central zone
1000-meter Universal Transverse Mercator grid ticks,
zone 12, shown in blue



ROAD CLASSIFICATION
Medium-duty ——— Light duty ———
Unimproved dirt - - - - -
U. S. Route State Route



TORTOLITA MTS., ARIZ.
N3230-W11100/15
1959
AMS 3749 II-SERIES V798

THIS MAP COMPLIES WITH NATIONAL MAP ACCURACY STANDARDS
FOR SALE BY U. S. GEOLOGICAL SURVEY, DENVER, COLORADO 80225, OR RESTON, VIRGINIA 22092
A FOLDER DESCRIBING TOPOGRAPHIC MAPS AND SYMBOLS IS AVAILABLE ON REQUEST

USGS
Historical File
Topographic Division

NOV 04 1974

5,250