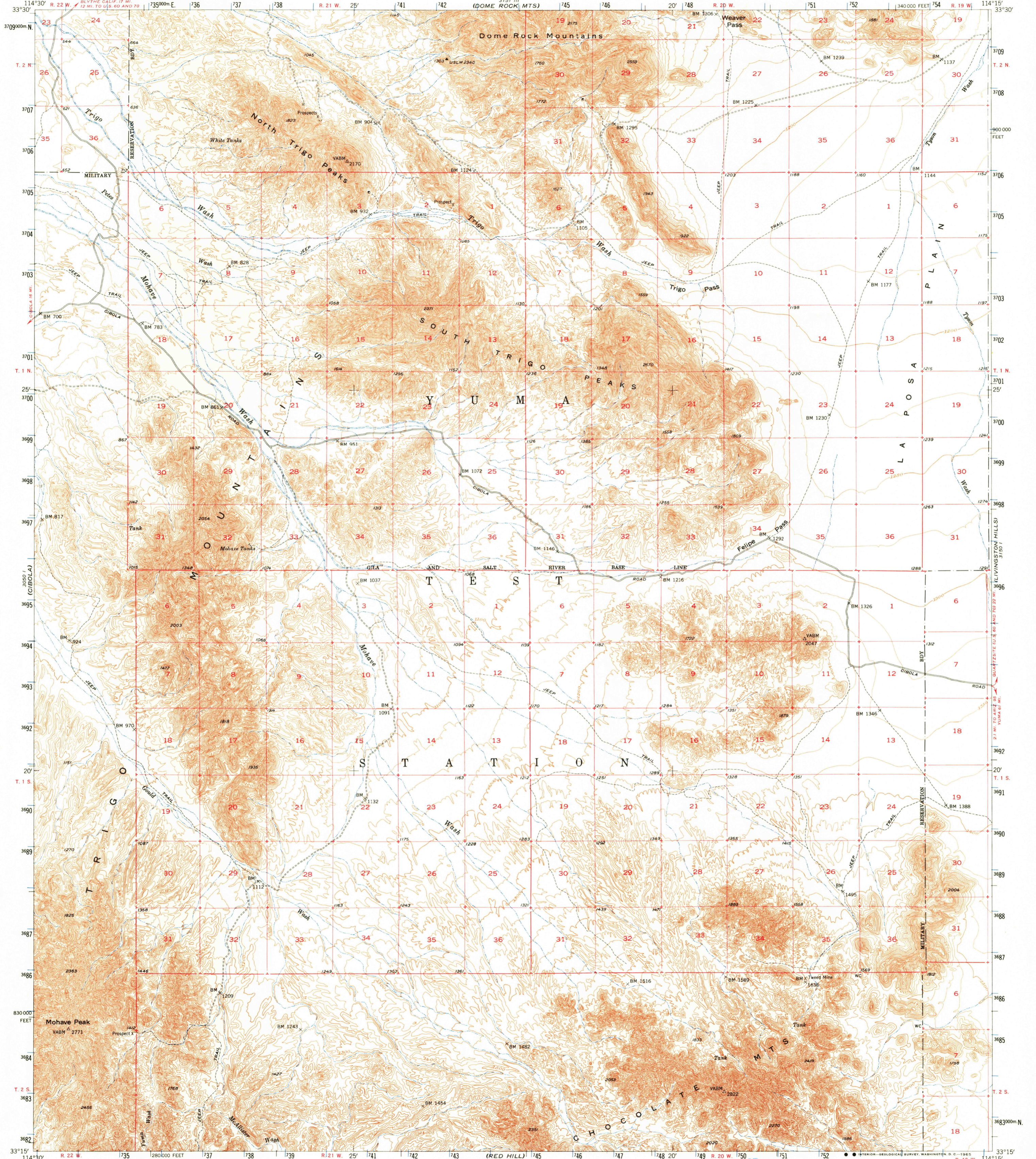


33° 11' 30" (GULF TIME) 1:24 000

UNITED STATES DEPARTMENT OF THE INTERIOR GEOLOGICAL SURVEY

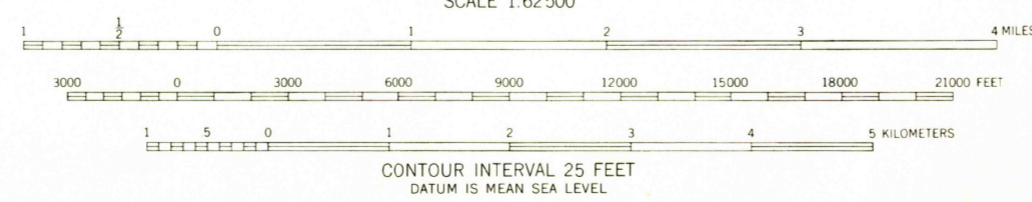
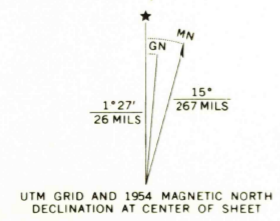
TRIGO PEAKS QUADRANGLE ARIZONA-YUMA CO. 15 MINUTE SERIES (TOPOGRAPHIC)

33° 11' 30" (QUARTZ SITE)



(P.C. 410) 3000 FT

Mapped, edited, and published by the Geological Survey Control by USGS and USC&GS Topography by plane-table surveys 1933-1934 Culture revision and field check 1954 Polyconic projection. 1927 North American datum 10,000-foot grid based on Arizona coordinate system, west zone 1000-meter Universal Transverse Mercator grid ticks, zone 11, shown in blue



USGS Historical File Topographic Division

ROAD CLASSIFICATION Heavy-duty 4 LANE 6 LANE Light-duty 2 LANE 6 LANE Medium-duty 2 LANE 6 LANE Unimproved dirt U.S. Route State Route

U.S.G.S. FILE COPY TOPOGRAPHIC DIVISION

TRIGO PEAKS, ARIZ. N3315-W11415/15

1954 AMS 3150 IV-SERIES V798

FOR SALE BY U. S. GEOLOGICAL SURVEY, DENVER, COLORADO 80225 OR WASHINGTON, D. C. 20242 A FOLDER DESCRIBING TOPOGRAPHIC MAPS AND SYMBOLS IS AVAILABLE ON REQUEST

OCT 8 1965 2245