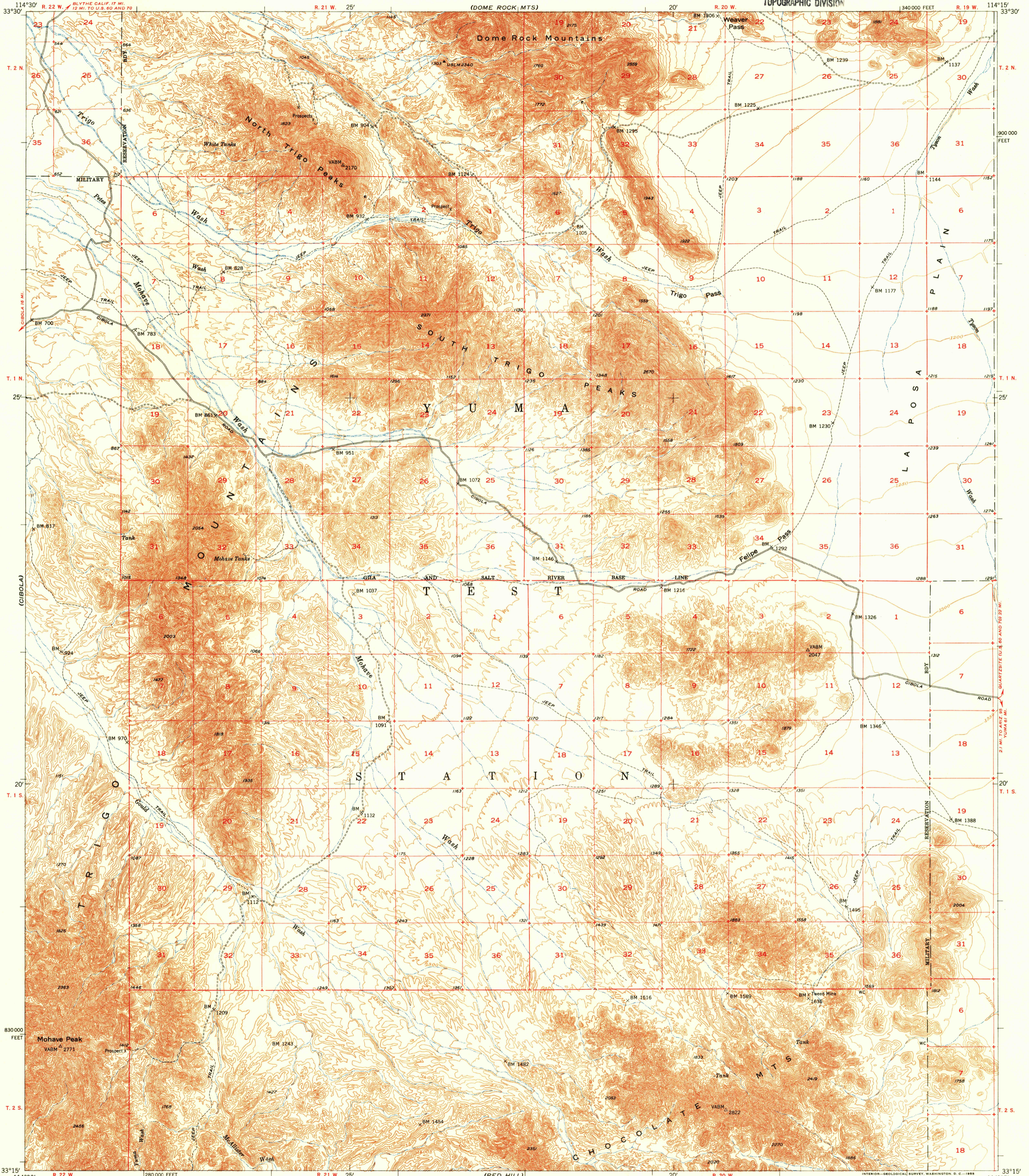


(GLYTHE)
1:24,000

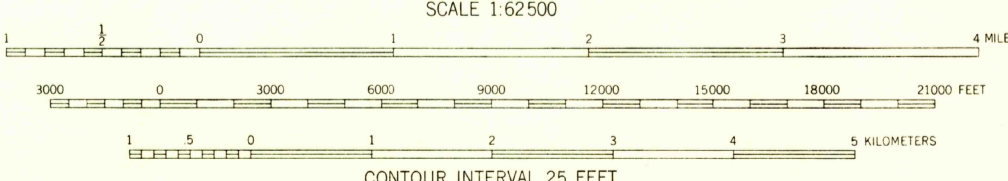
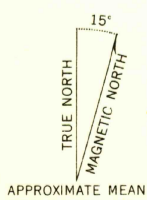
UNITED STATES
DEPARTMENT OF THE INTERIOR
GEOLOGICAL SURVEY

U.S.G.S.
FILE COPY
TOPOGRAPHIC DIVISION

TRIGO PEAKS QUADRANGLE
ARIZONA—YUMA CO.
15 MINUTE SERIES (TOPOGRAPHIC)



Mapped, edited, and published by the Geological Survey
Control by USGS and USC&GS
Topography by plane-table surveys 1933-1934
Culture revision and field check 1954
Polyconic projection. 1927 North American datum
10,000-foot grid based on Arizona coordinate system,
west zone



USGS
Historical File
Topographic Division

ROAD CLASSIFICATION

Heavy-duty	4 LANE 16 LANE	Light-duty
Medium-duty	4 LANE 16 LANE	Unimproved dirt
U. S. Route		State Route

U.S.G.S.
FILE COPY
TOPOGRAPHIC DIVISION

TRIGO PEAKS, ARIZ.
N3315-W11415/15

1954

FOR SALE BY U. S. GEOLOGICAL SURVEY, FEDERAL CENTER, DENVER, COLORADO OR WASHINGTON 25, D. C.
A FOLDER DESCRIBING TOPOGRAPHIC MAPS AND SYMBOLS IS AVAILABLE ON REQUEST

SEP 8 1955
2120